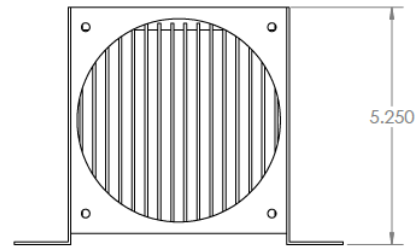
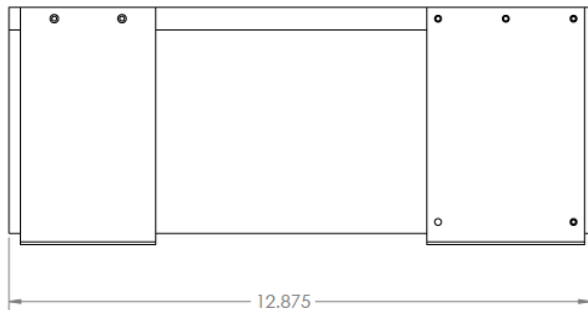
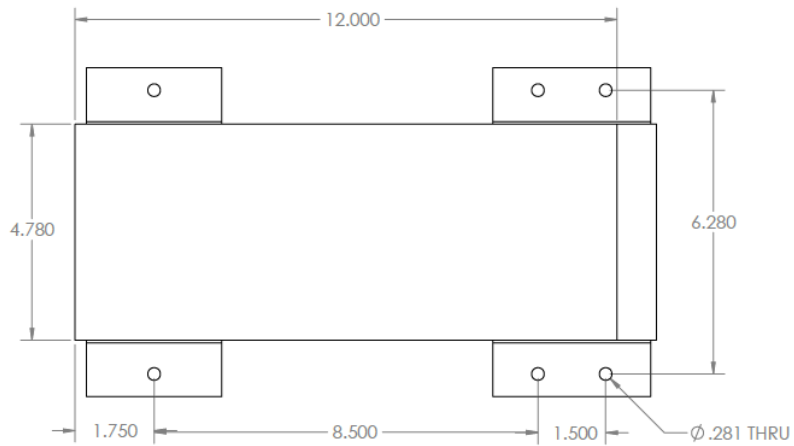
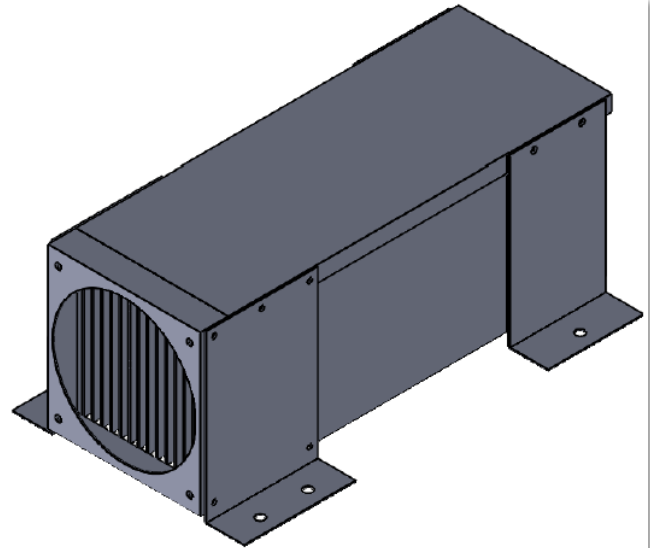




D6 INDUSTRIES
Air Cooled Heatsink
SW5-1200
78 CFM
1000W Distributed

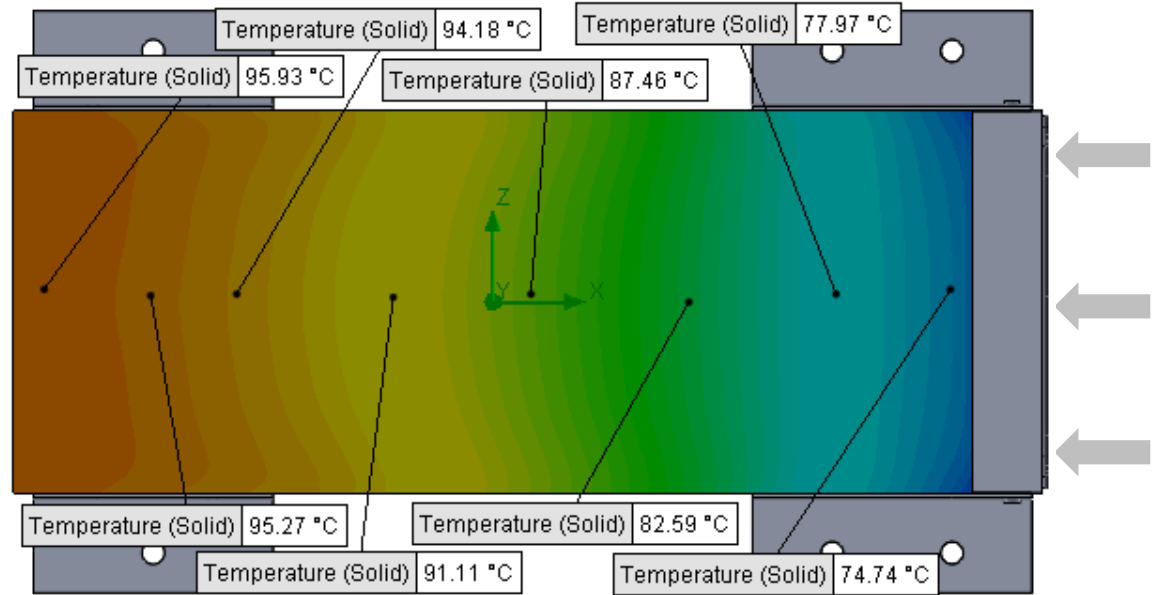


PARAMETERS

Inlet Flow: 78 CFM

Ambient Air Temp in: 20°C

Heat Source: 1000W distributed



Simulation Data

Goal Name	Unit	Value
SG Min Temperature (Solid) 1	[°C]	71.77179274
SG Av Temperature (Solid) 1	[°C]	87.51149321
SG Max Temperature (Solid) 1	[°C]	96.14947305

SG-Surface goal is a parameter on selected surface(s).

RESULTS

Thermal Resistance: 0.0675°C/W

Min Surface Temp: 71.77°C

Max Surface Temp: 96.14°C