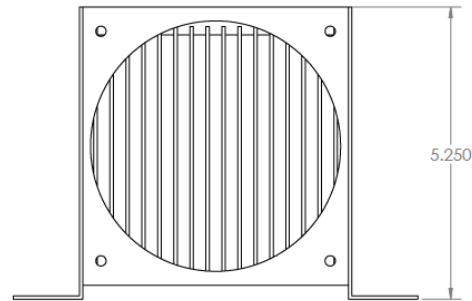
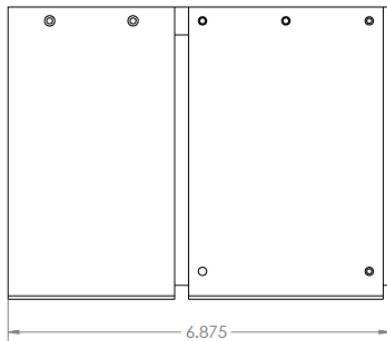
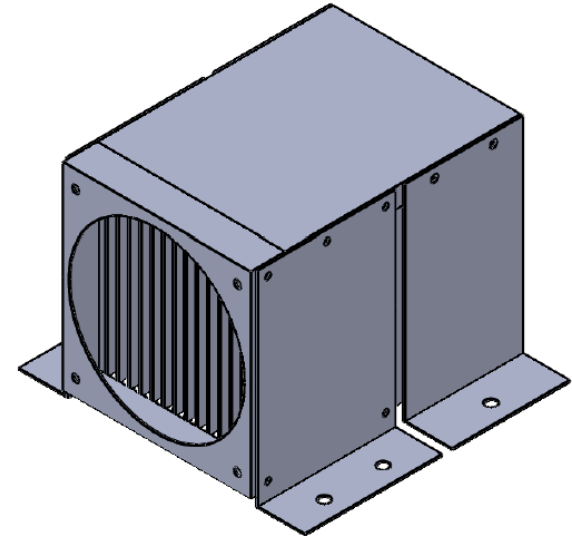
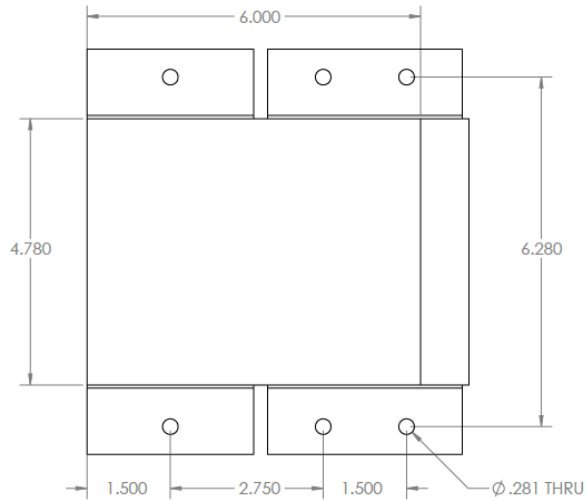




D6 INDUSTRIES
Air Cooled Heatsink
SW5-0600
78 CFM
1000W Distributed

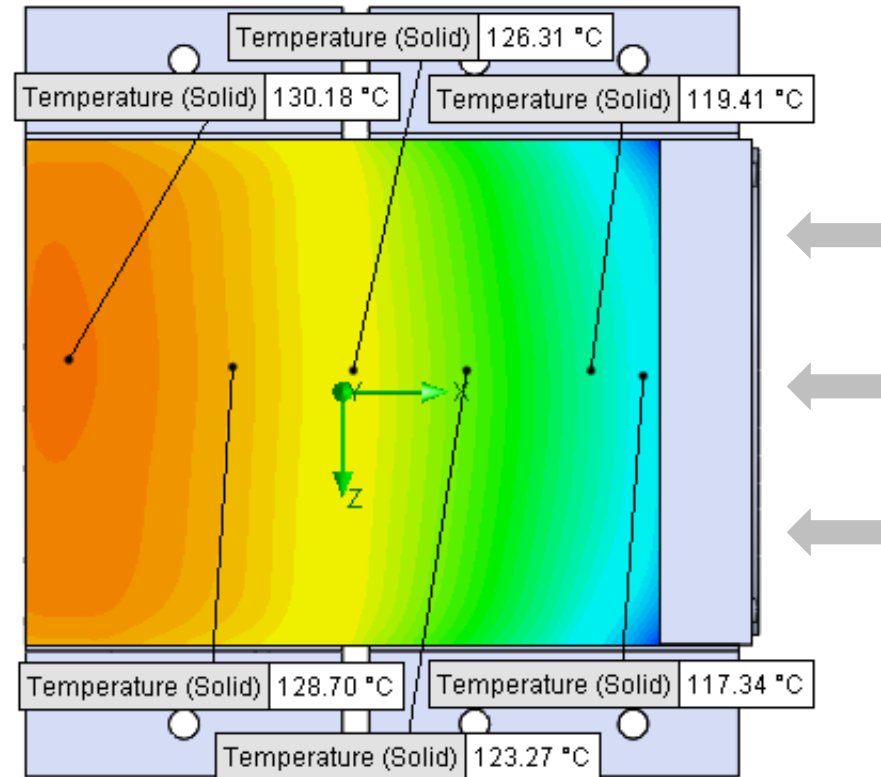


PARAMETERS

Inlet Flow: 78 CFM

Ambient Air Temp in: 20°C

Heat Source: 1000W distributed



Simulation Data

Goal Name	Unit	Value
SG Min Temperature (Solid) 1	[°C]	111.4439593
SG Av Temperature (Solid) 1	[°C]	125.2371799
SG Max Temperature (Solid) 1	[°C]	130.1968565

SG-Surface goal is a parameter on selected surface(s).

RESULTS

Thermal Resistance: 0.1052°C/W

Min Surface Temp: 111.44°C

Max Surface Temp: 130.19°C