



D6 INDUSTRIES
STANDARD PRODUCT
HT-TAP1000-5
SIMULATION RESULTS

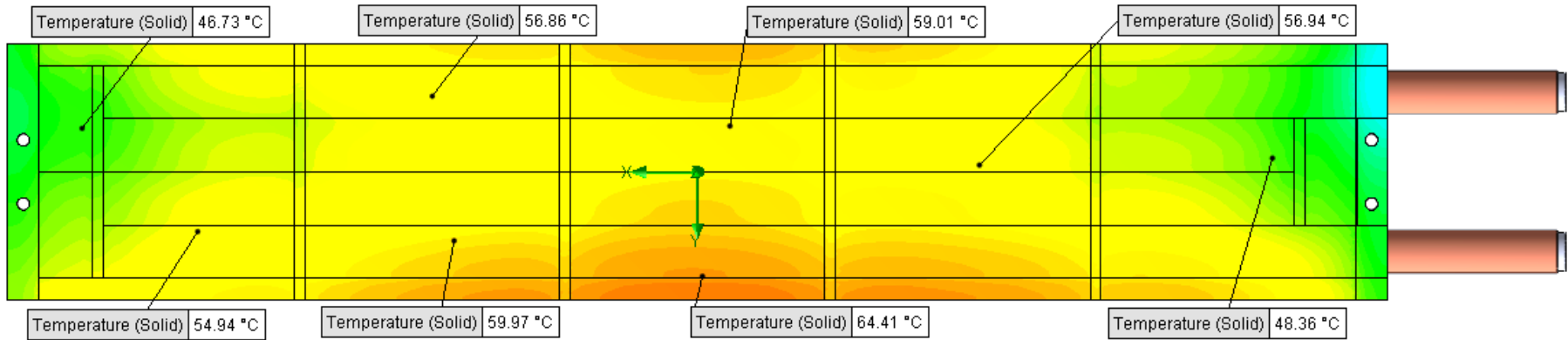
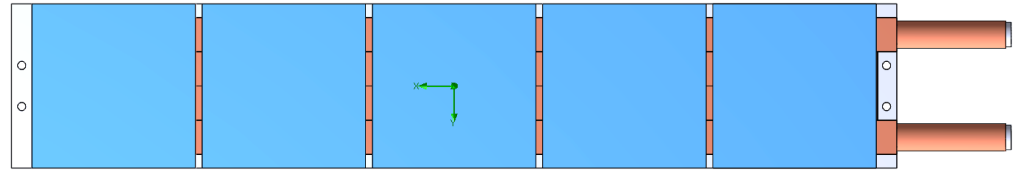
1-3 gpm flow rates
5X 1000W Heat Load

D6 STANDARD HT-TAP1000-5



PARAMETERS

Fluid: Water
 Inlet Flow: 1 gpm
 Inlet Fluid Temp: 20°C
 Heat Source: 1 blue square=1000W (5000W total)
 Tube: ½ OD round copper inlet/outlet



Simulation Data

Goal Name	Unit	Value
SG Min Temperature (Solid) 1	[°C]	34.17932398
SG Av Temperature (Solid) 1	[°C]	55.77808985
SG Max Temperature (Solid) 1	[°C]	65.82691949
FLUID OUT	[°C]	38.92302024
PRESSURE DROP	[lbf/in ²]	1.331437804

RESULTS

Thermal Resistance: 0.0071°C/W
 Pressure Drop: 1.33psi
 Min Surface Temp: 34.17°C
 Max Surface Temp: 65.82°C
 Water Temp Out: 38.92°C

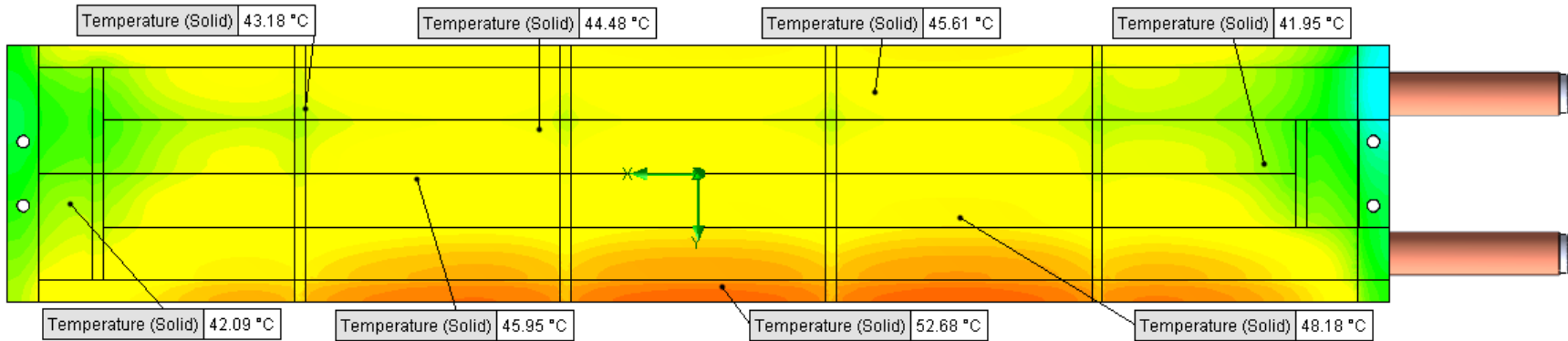
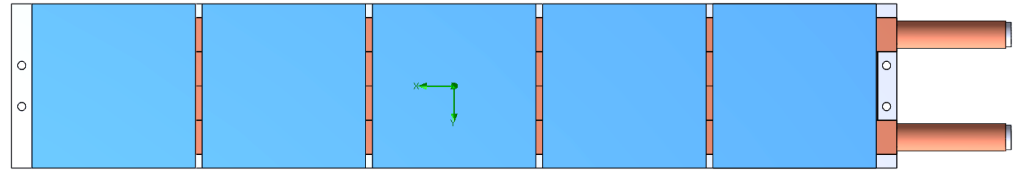
SG-Surface goal is a parameter on selected surface(s).
 In this case, it is the entire tube side surface area.

D6 STANDARD HT-TAP1000-5



PARAMETERS

Fluid: Water
 Inlet Flow: 1.5 gpm
 Inlet Fluid Temp: 20°C
 Heat Source: 1 blue square=1000W (5000W total)
 Tube: ½ OD round copper inlet/outlet



Simulation Data

Goal Name	Unit	Value
SG Min Temperature (Solid) 1	[°C]	30.00668235
SG Av Temperature (Solid) 1	[°C]	45.71194802
SG Max Temperature (Solid) 1	[°C]	53.4029195
FLUID OUT	[°C]	32.67331901
PRESSURE DROP	[lbf/in^2]	2.927216072

RESULTS

Thermal Resistance: 0.0051°C/W
 Pressure Drop: 2.92psi
 Min Surface Temp: 30.00°C
 Max Surface Temp: 53.40°C
 Water Temp Out: 32.67°C

SG-Surface goal is a parameter on selected surface(s).
 In this case, it is the entire tube side surface area.

D6 STANDARD HT-TAP1000-5



PARAMETERS

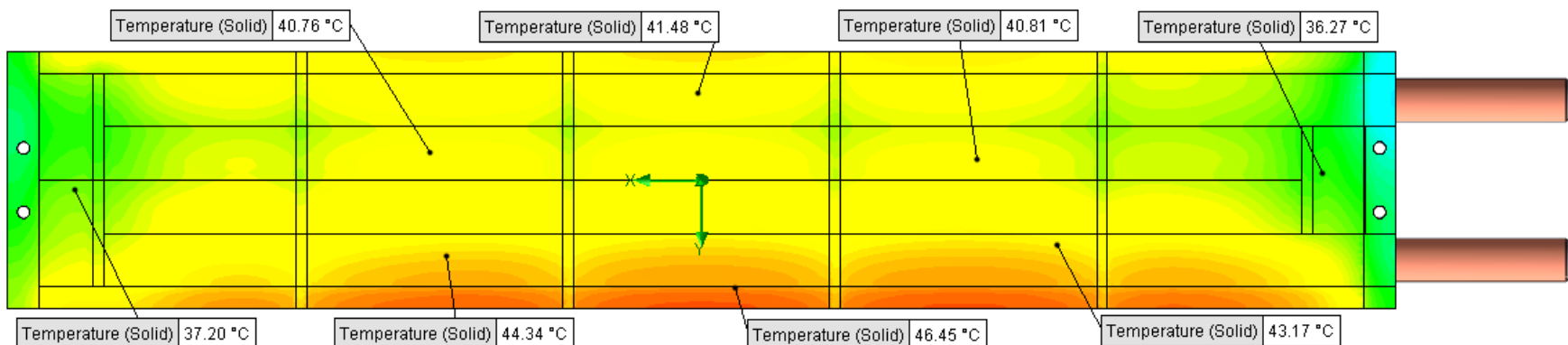
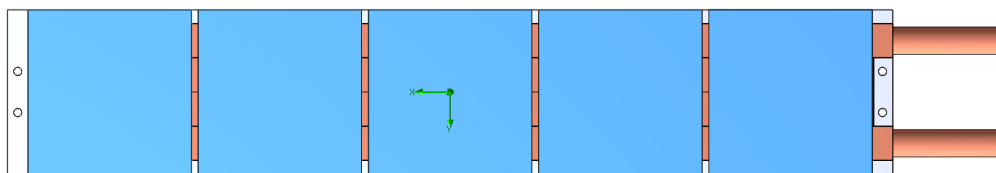
Fluid: Water

Inlet Flow: 2 gpm

Inlet Fluid Temp: 20°C

Heat Source: 1 blue square=1000W (5000W total)

Tube: ½ OD round copper inlet/outlet



Simulation Data

Goal Name	Unit	Value
SG Min Temperature (Solid) 1	[°C]	27.64633728
SG Av Temperature (Solid) 1	[°C]	40.98332579
SG Max Temperature (Solid) 1	[°C]	47.75898895
FLUID OUT	[°C]	29.53580079
PRESSURE DROP	[lbf/in^2]	5.227643995

SG-Surface goal is a parameter on selected surface(s).
In this case, it is the entire tube side surface area.

RESULTS

Thermal Resistance: 0.0041°C/W

Pressure Drop: 5.22psi

Min Surface Temp: 27.64°C

Max Surface Temp: 47.75°C

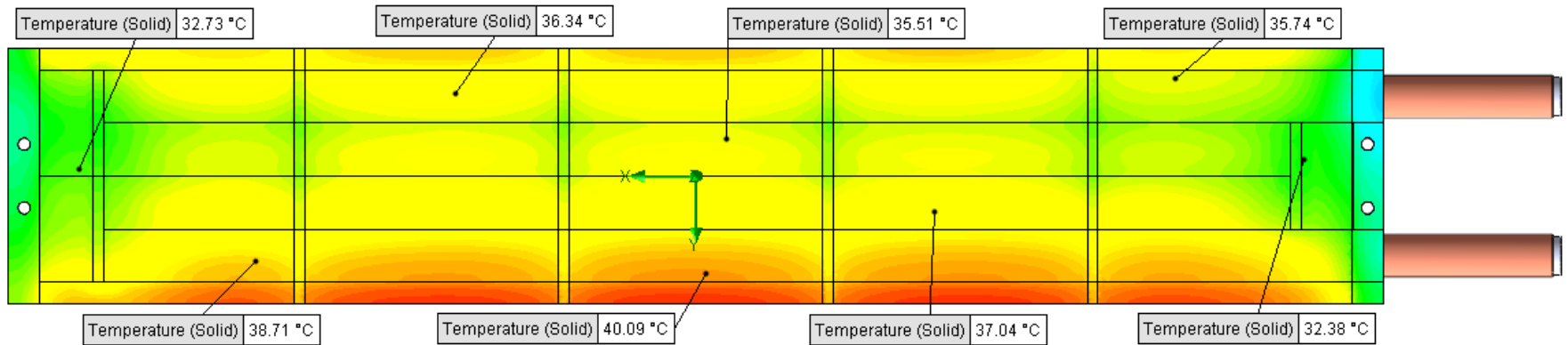
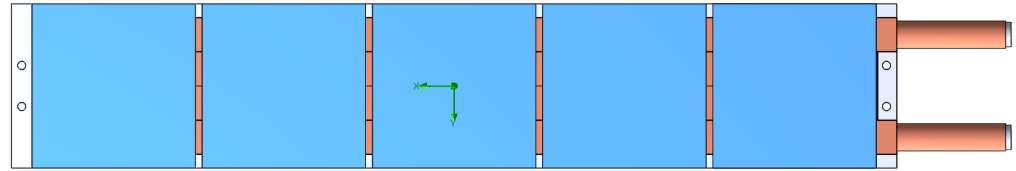
Water Temp Out: 29.53°C

D6 STANDARD HT-TAP1000-5



PARAMETERS

Fluid: Water
 Inlet Flow: 3 gpm
 Inlet Fluid Temp: 20°C
 Heat Source: 1 blue square=1000W (5000W total)
 Tube: ½ OD round copper inlet/outlet



Simulation Data

Goal Name	Unit	Value
SG Min Temperature (Solid) 1	[°C]	25.1752171
SG Av Temperature (Solid) 1	[°C]	36.08988379
SG Max Temperature (Solid) 1	[°C]	41.98777074
FLUID OUT	[°C]	26.30596235
PRESSURE DROP	[lbf/in^2]	11.85990016

RESULTS

Thermal Resistance: 0.0032°C/W
 Pressure Drop: 11.85psi
 Min Surface Temp: 25.17°C
 Max Surface Temp: 41.98°C
 Water Temp Out: 26.30°C

SG-Surface goal is a parameter on selected surface(s).
 In this case, it is the entire tube side surface area.