



**D6 INDUSTRIES
STANDARD PRODUCT
HB-6P-0600-CU-C**

SIMULATION RESULTS

1-3 gpm flow rates
Distributed 1000W

D6 STANDARD- HB-6P-0600-CU-C



PARAMETERS

Fluid: Water

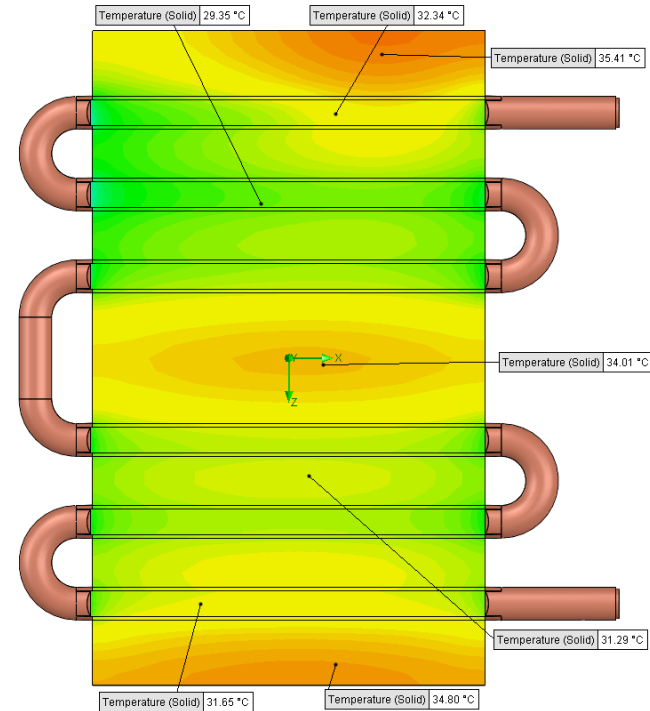
Inlet Flow: 1 gpm

Inlet Fluid Temp: 20°C

Heat Source: 1000W distributed

Surface Area: 10.0" x 6.0"

Tube: 1/2 OD Copper



Simulation Data

Goal Name	Unit	Value
SG Min Temperature (Solid) 1	[°C]	23.71470683
SG Av Temperature (Solid) 1	[°C]	31.61827751
SG Max Temperature (Solid) 1	[°C]	35.68493448
WATER OUT	[°C]	23.79237188
PRESSURE DROP	[lbf/in^2]	0.336124331

SG-Surface goal is a parameter on selected surface(s).
In this case, it is the entire tube side surface area.

RESULTS

Thermal Resistance: 0.011°C/W

Pressure Drop: 0.33psi

Min Surface Temp: 23.71°C

Max Surface Temp: 35.68°C

Water Temp Out: 23.79°C

D6 STANDARD- HB-6P-0600-CU-C



PARAMETERS

Fluid: Water

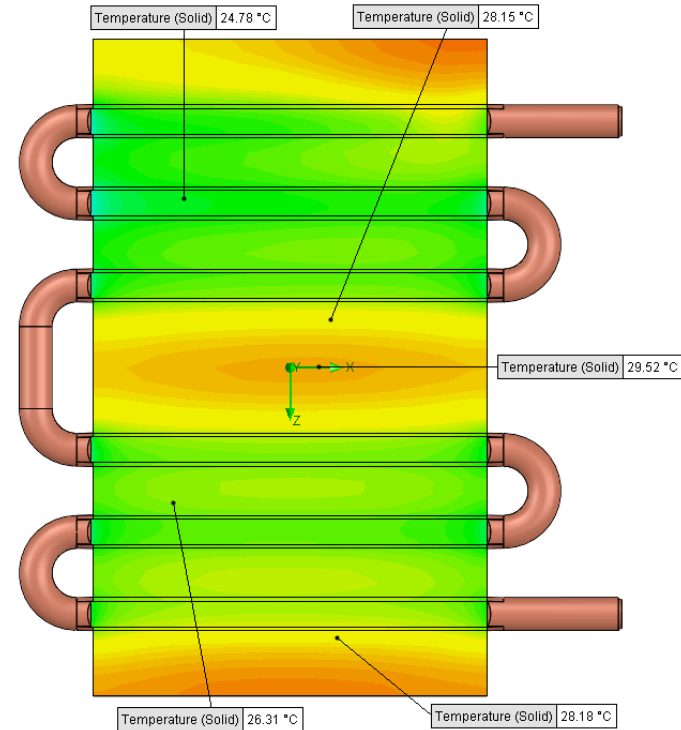
Inlet Flow: 2 gpm

Inlet Fluid Temp: 20°C

Heat Source: 1000W distributed

Surface Area: 10.0" x 6.0"

Tube: 1/2 OD Copper



Simulation Data

Goal Name	Unit	Value
SG Min Temperature (Solid) 1	[°C]	21.6644113
SG Av Temperature (Solid) 1	[°C]	27.06246911
SG Max Temperature (Solid) 1	[°C]	30.37580163
WATER OUT	[°C]	21.89972545
PRESSURE DROP	[lbf/in^2]	1.120939866

SG-Surface goal is a parameter on selected surface(s).
In this case, it is the entire tube side surface area.

RESULTS

Thermal Resistance: 0.007°C/W

Pressure Drop: 1.12psi

Min Surface Temp: 21.66°C

Max Surface Temp: 30.37°C

Water Temp Out: 21.89°C

D6 STANDARD- HB-6P-0600-CU-C



PARAMETERS

Fluid: Water

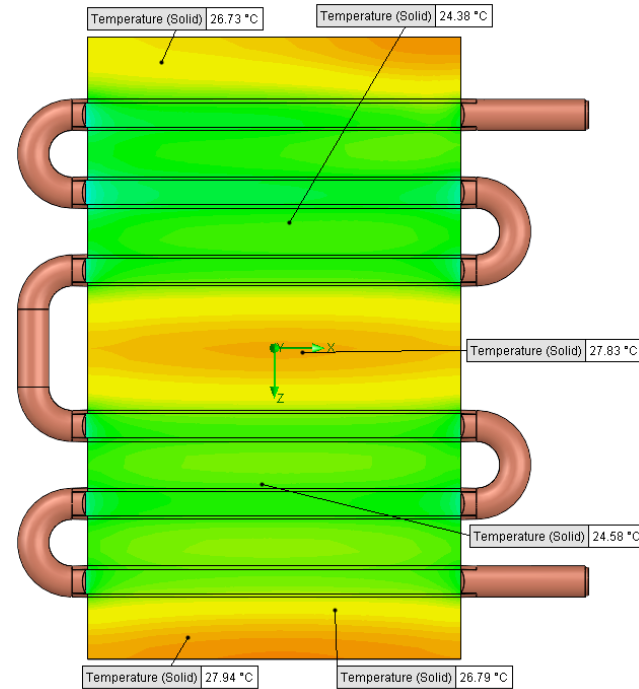
Inlet Flow: 3 gpm

Inlet Fluid Temp: 20°C

Heat Source: 1000W distributed

Surface Area: 10.0" x 6.0"

Tube: 1/2 OD Copper



Simulation Data

Goal Name	Unit	Value
SG Min Temperature (Solid) 1	[°C]	20.99690376
SG Av Temperature (Solid) 1	[°C]	25.41148335
SG Max Temperature (Solid) 1	[°C]	28.3488595
WATER OUT	[°C]	21.26926044
PRESSURE DROP	[lbf/in^2]	2.404686144

SG-Surface goal is a parameter on selected surface(s).
In this case, it is the entire tube side surface area.

RESULTS

Thermal Resistance: 0.005°C/W

Pressure Drop: 2.40psi

Min Surface Temp: 20.99°C

Max Surface Temp: 28.34°C

Water Temp Out: 21.26°C