



**D6 INDUSTRIES  
STANDARD PRODUCT  
HB-638P-2400-CU-C**

**SIMULATION RESULTS**

1-3 gpm flow rates  
Distributed 1000W

# D6 STANDARD- HB-638P-2400-CU-C



## PARAMETERS

Fluid: Water

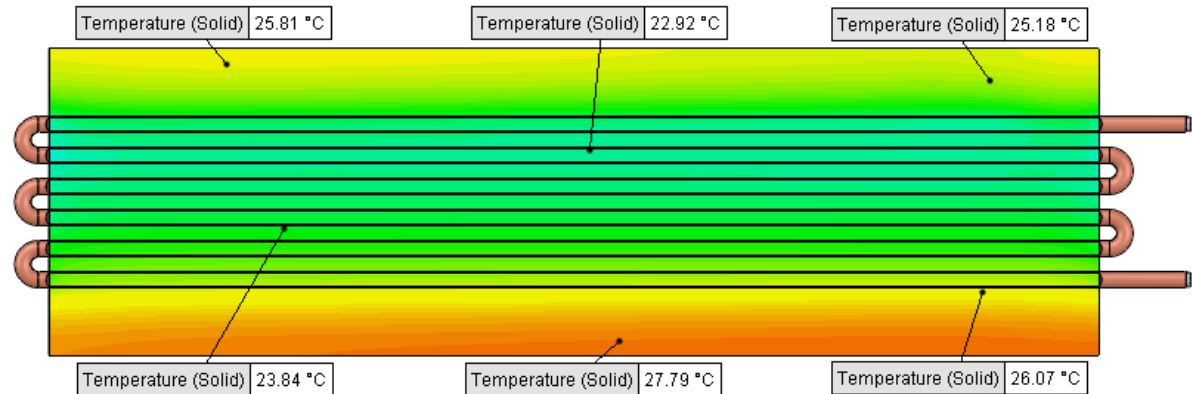
Inlet Flow: 1 gpm

Inlet Fluid Temp: 20°C

Heat Source: 1000W distributed

Surface Area: 7.0" x 24.0"

Tube: 3/8 OD Copper



## Simulation Data

Goal Name	Unit	Value
SG Min Temperature (Solid) 1	[°C]	22.29427759
SG Av Temperature (Solid) 1	[°C]	24.74250959
SG Max Temperature (Solid) 1	[°C]	27.95288851
WATER OUT	[°C]	23.78114449
PRESSURE DROP	[lbf/in^2]	5.001730649

SG-Surface goal is a parameter on selected surface(s).  
In this case, it is the entire tube side surface area.

## RESULTS

Thermal Resistance: 0.0047°C/W

Pressure Drop: 5.00psi

Min Surface Temp: 22.29°C

Max Surface Temp: 27.95°C

Water Temp Out: 23.78°C

# D6 STANDARD- HB-638P-2400-CU-C



## PARAMETERS

Fluid: Water

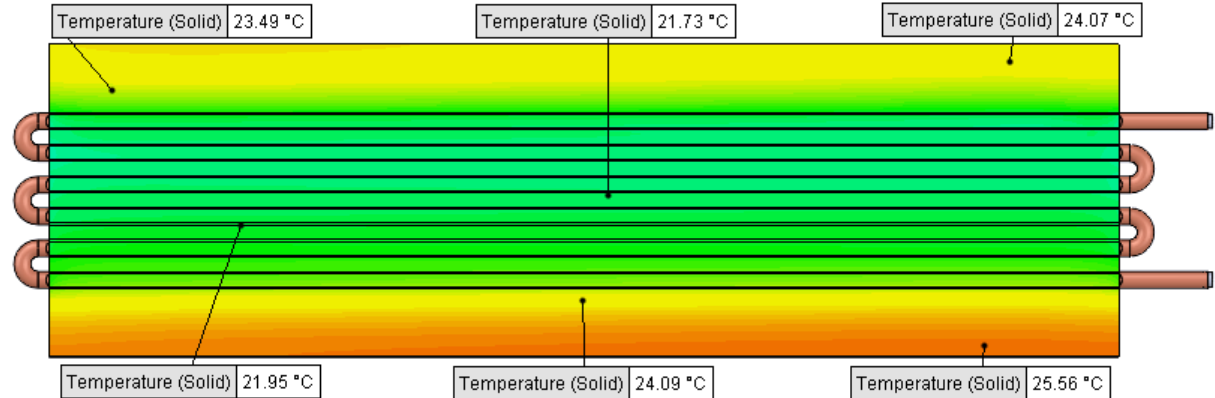
Inlet Flow: 2 gpm

Inlet Fluid Temp: 20°C

Heat Source: 1000W distributed

Surface Area: 7.0" x 24.0"

Tube: 3/8 OD Copper



## Simulation Data

Goal Name	Unit	Value
SG Min Temperature (Solid) 1	[°C]	21.1326436
SG Av Temperature (Solid) 1	[°C]	22.94776508
SG Max Temperature (Solid) 1	[°C]	25.61281722
WATER OUT	[°C]	21.91809072
PRESSURE DROP	[lbf/in^2]	17.41784787

SG-Surface goal is a parameter on selected surface(s).  
In this case, it is the entire tube side surface area.

## RESULTS

Thermal Resistance: 0.0029°C/W

Pressure Drop: 17.41psi

Min Surface Temp: 21.13°C

Max Surface Temp: 25.61°C

Water Temp Out: 21.91°C

# D6 STANDARD- HB-638P-2400-CU-C



## PARAMETERS

Fluid: Water

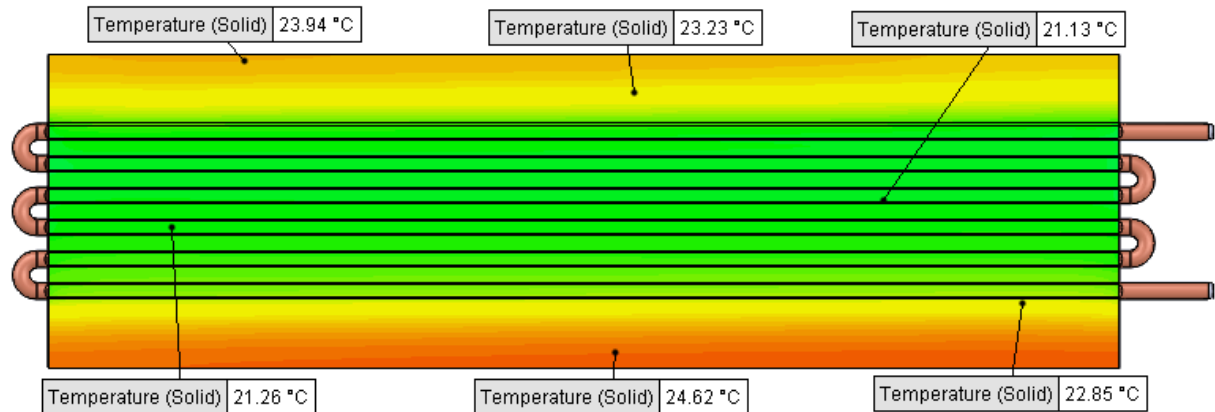
Inlet Flow: 3 gpm

Inlet Fluid Temp: 20°C

Heat Source: 1000W distributed

Surface Area: 7.0" x 24.0"

Tube: 3/8 OD Copper



## Simulation Data

Goal Name	Unit	Value
SG Min Temperature (Solid) 1	[°C]	20.77862963
SG Av Temperature (Solid) 1	[°C]	22.34543868
SG Max Temperature (Solid) 1	[°C]	24.78614126
WATER OUT	[°C]	21.31750679
PRESSURE DROP	[lbf/in^2]	35.99250305

SG-Surface goal is a parameter on selected surface(s).  
In this case, it is the entire tube side surface area.

## RESULTS

Thermal Resistance: 0.0023°C/W

Pressure Drop: 35.99psi

Min Surface Temp: 20.77°C

Max Surface Temp: 24.78°C

Water Temp Out: 21.31°C