



**D6 INDUSTRIES
STANDARD PRODUCT
HB-638P-1200-CU-C**

SIMULATION RESULTS

1-3 gpm flow rates
Distributed 1000W

D6 STANDARD- HB-638P-1200-CU-C



PARAMETERS

Fluid: Water

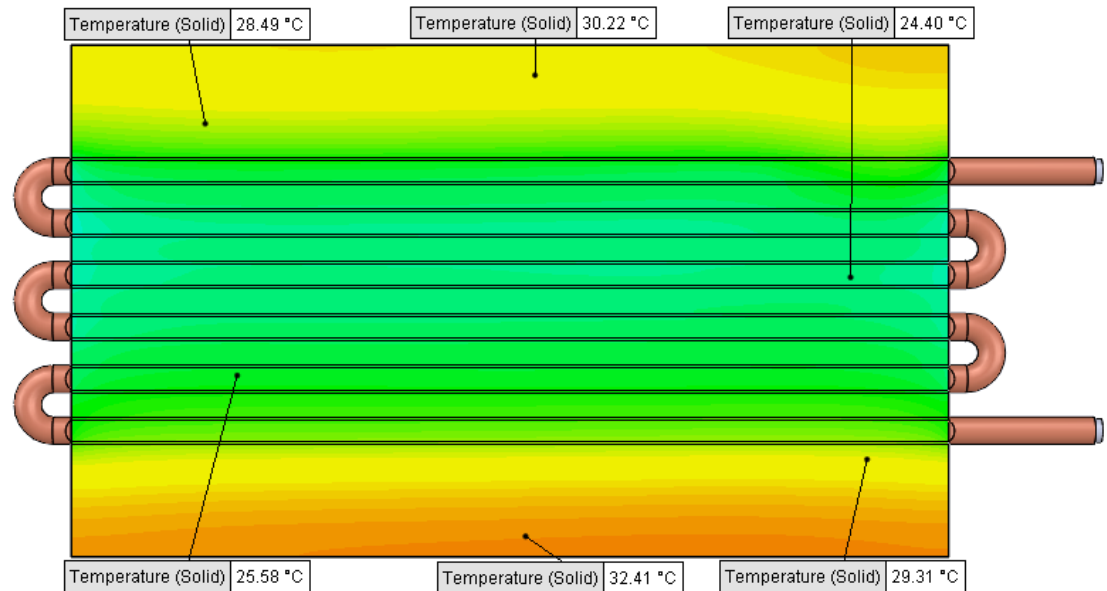
Inlet Flow: 1 gpm

Inlet Fluid Temp: 20°C

Heat Source: 1000W distributed

Surface Area: 7.0" x 12.0"

Tube: 3/8 OD Copper



Simulation Data

Goal Name	Unit	Value
SG Min Temperature (Solid) 1	[°C]	23.21697342
SG Av Temperature (Solid) 1	[°C]	27.3797458
SG Max Temperature (Solid) 1	[°C]	32.61187061
WATER OUT	[°C]	23.79432614
PRESSURE DROP	[lbf/in ²]	2.701331619

SG-Surface goal is a parameter on selected surface(s).
In this case, it is the entire tube side surface area.

RESULTS

Thermal Resistance: 0.0073°C/W

Pressure Drop: 2.70psi

Min Surface Temp: 23.21°C

Max Surface Temp: 32.61°C

Water Temp Out: 23.79°C

D6 STANDARD- HB-638P-1200-CU-C



PARAMETERS

Fluid: Water

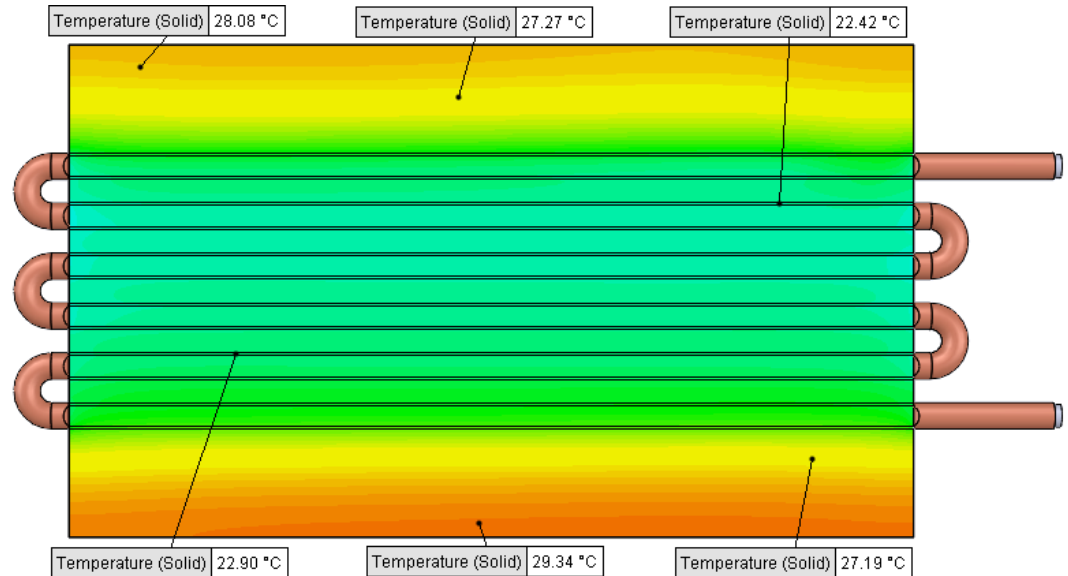
Inlet Flow: 2 gpm

Inlet Fluid Temp: 20°C

Heat Source: 1000W distributed

Surface Area: 7.0" x 12.0"

Tube: 3/8 OD Copper



Simulation Data

Goal Name	Unit	Value
SG Min Temperature (Solid) 1	[°C]	21.61547907
SG Av Temperature (Solid) 1	[°C]	24.83370608
SG Max Temperature (Solid) 1	[°C]	29.45856981
WATER OUT	[°C]	21.91151538
PRESSURE DROP	[lbf/in^2]	9.507392711

SG-Surface goal is a parameter on selected surface(s).
In this case, it is the entire tube side surface area.

RESULTS

Thermal Resistance: 0.0048°C/W

Pressure Drop: 9.50psi

Min Surface Temp: 21.61°C

Max Surface Temp: 29.45°C

Water Temp Out: 21.91°C

D6 STANDARD- HB-638P-1200-CU-C



PARAMETERS

Fluid: Water

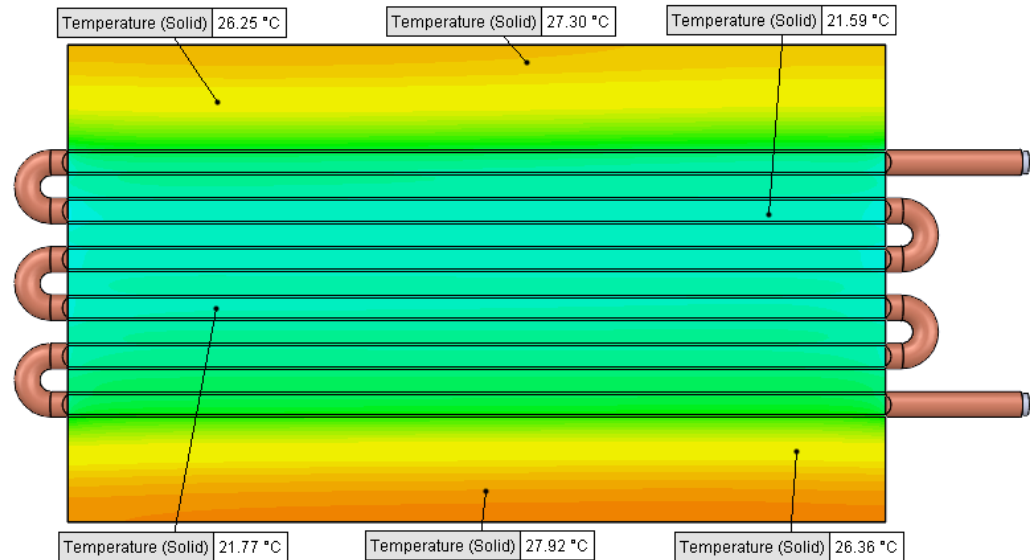
Inlet Flow: 3 gpm

Inlet Fluid Temp: 20°C

Heat Source: 1000W distributed

Surface Area: 7.0" x 12.0"

Tube: 3/8 OD Copper



Simulation Data

Goal Name	Unit	Value
SG Min Temperature (Solid) 1	[°C]	21.12792896
SG Av Temperature (Solid) 1	[°C]	23.95502284
SG Max Temperature (Solid) 1	[°C]	28.32026921
WATER OUT	[°C]	21.29523424
PRESSURE DROP	[lbf/in ²]	19.80456634

SG-Surface goal is a parameter on selected surface(s).
In this case, it is the entire tube side surface area.

RESULTS

Thermal Resistance: 0.0039°C/W

Pressure Drop: 19.80psi

Min Surface Temp: 21.12°C

Max Surface Temp: 28.32°C

Water Temp Out: 21.29°C