



D6 INDUSTRIES
STANDARD PRODUCT
HB-638P-0600-CU-C

SIMULATION RESULTS

1-3 gpm flow rates
Distributed 1000W

D6 STANDARD- HB-638P-0600-CU-C



PARAMETERS

Fluid: Water

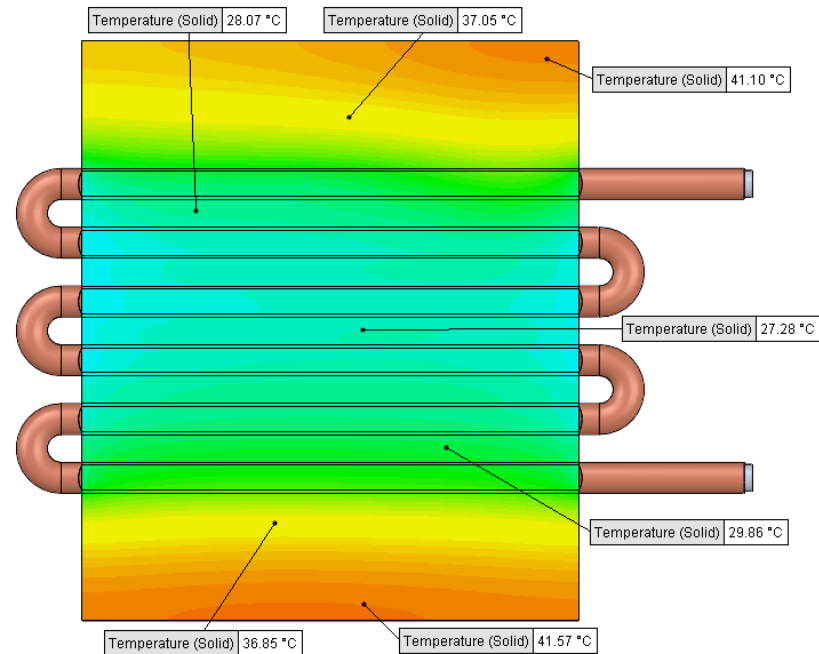
Inlet Flow: 1 gpm

Inlet Fluid Temp: 20°C

Heat Source: 1000W distributed

Surface Area: 7.0" x 6.0"

Tube: 3/8 OD Copper



Simulation Data

Goal Name	Unit	Value
SG Min Temperature (Solid) 1	[°C]	24.53637124
SG Av Temperature (Solid) 1	[°C]	32.48737463
SG Max Temperature (Solid) 1	[°C]	41.76131312
WATER OUT	[°C]	23.80071148
PRESSURE DROP	[lbf/in^2]	1.647789198

SG-Surface goal is a parameter on selected surface(s).
In this case, it is the entire tube side surface area.

RESULTS

Thermal Resistance: 0.012°C/W

Pressure Drop: 1.64psi

Min Surface Temp: 24.53°C

Max Surface Temp: 41.76°C

Water Temp Out: 23.80°C

D6 STANDARD- HB-638P-0600-CU-C



PARAMETERS

Fluid: Water

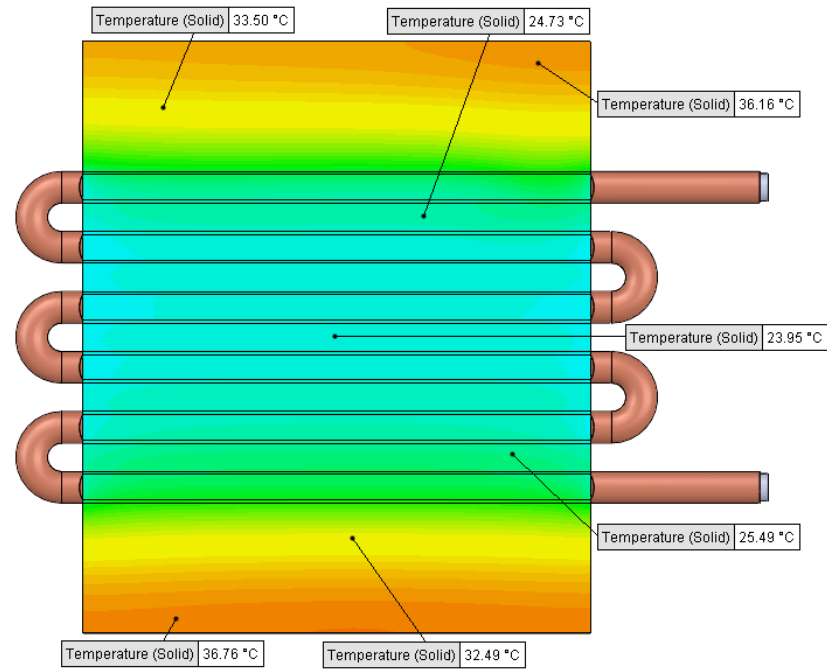
Inlet Flow: 2 gpm

Inlet Fluid Temp: 20°C

Heat Source: 1000W distributed

Surface Area: 7.0" x 6.0"

Tube: 3/8 OD Copper



Simulation Data

Goal Name	Unit	Value
SG Min Temperature (Solid) 1	[°C]	22.30271994
SG Av Temperature (Solid) 1	[°C]	28.49877267
SG Max Temperature (Solid) 1	[°C]	37.02288797
WATER OUT	[°C]	21.90688642
PRESSURE DROP	[lbf/in^2]	5.866322543

SG-Surface goal is a parameter on selected surface(s).
In this case, it is the entire tube side surface area.

RESULTS

Thermal Resistance: 0.008°C/W

Pressure Drop: 5.86psi

Min Surface Temp: 22.30°C

Max Surface Temp: 37.02°C

Water Temp Out: 21.90°C

D6 STANDARD- HB-638P-0600-CU-C



PARAMETERS

Fluid: Water

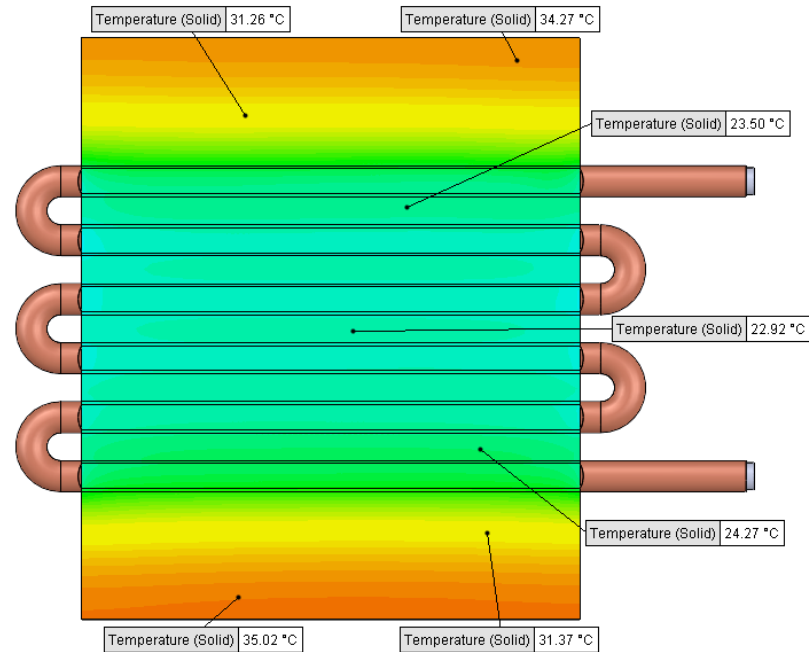
Inlet Flow: 3 gpm

Inlet Fluid Temp: 20°C

Heat Source: 1000W distributed

Surface Area: 7.0" x 6.0"

Tube: 3/8 OD Copper



Simulation Data

Goal Name	Unit	Value
SG Min Temperature (Solid) 1	[°C]	21.59646217
SG Av Temperature (Solid) 1	[°C]	27.10977348
SG Max Temperature (Solid) 1	[°C]	35.32894953
WATER OUT	[°C]	21.28395575
PRESSURE DROP	[lbf/in^2]	12.38274273

SG-Surface goal is a parameter on selected surface(s).
In this case, it is the entire tube side surface area.

RESULTS

Thermal Resistance: 0.007°C/W

Pressure Drop: 12.38psi

Min Surface Temp: 21.59°C

Max Surface Temp: 35.32°C

Water Temp Out: 21.28°C