



D6 INDUSTRIES
STANDARD PRODUCT
HB-2P-0600-CU-C

SIMULATION RESULTS

1-2 gpm flow rates
Distributed 100W

D6 STANDARD- HB-2P-0600-CU-C



PARAMETERS

Fluid: Water

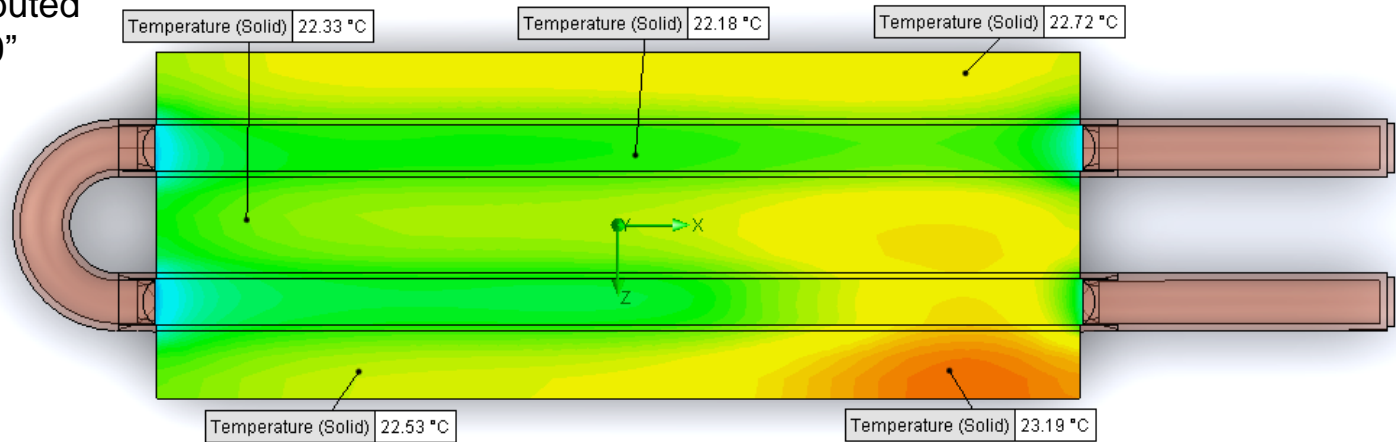
Inlet Flow: 1 gpm

Inlet Fluid Temp: 20°C

Heat Source: 100W distributed

Surface Area: 2.25" x 6.00"

Tube: 3/8 OD Copper



Simulation Data

Goal Name	Unit	Value
SG Min Temperature (Solid) 1	[°C]	20.88665138
SG Av Temperature (Solid) 1	[°C]	22.46019962
SG Max Temperature (Solid) 1	[°C]	23.26911944
WATER OUT	[°C]	20.43301694
PRESSURE DROP	[lbf/in^2]	0.569895866

SG-Surface goal is a parameter on selected surface(s).
In this case, it is the entire tube side surface area.

RESULTS

Thermal Resistance: 0.0246°C/W

Pressure Drop: 0.56psi

Min Surface Temp: 20.88°C

Max Surface Temp: 23.26°C

Water Temp Out: 20.43°C

D6 STANDARD- HB-2P-0600-CU-C



PARAMETERS

Fluid: Water

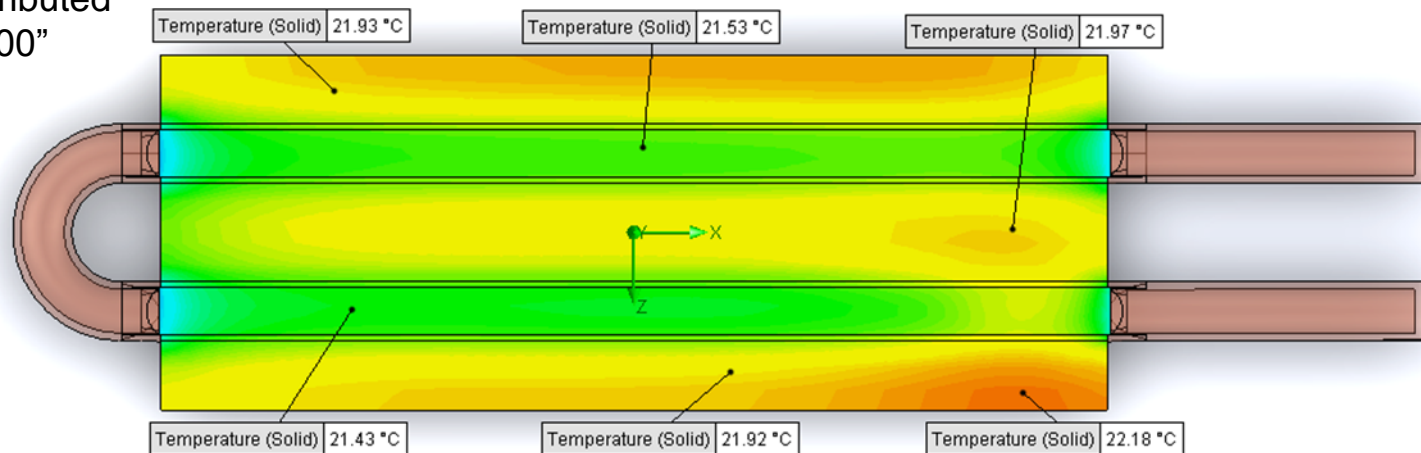
Inlet Flow: 1.5 gpm

Inlet Fluid Temp: 20°C

Heat Source: 100W distributed

Surface Area: 2.25" x 6.00"

Tube: 3/8 OD Copper



Simulation Data

Goal Name	Unit	Value
SG Min Temperature (Solid) 1	[°C]	20.57181158
SG Av Temperature (Solid) 1	[°C]	21.75354142
SG Max Temperature (Solid) 1	[°C]	22.23454993
WATER OUT	[°C]	20.30667842
PRESSURE DROP	[lbf/in^2]	1.181499794

SG-Surface goal is a parameter on selected surface(s).
In this case, it is the entire tube side surface area.

RESULTS

Thermal Resistance: 0.0175°C/W

Pressure Drop: 1.18psi

Min Surface Temp: 20.75°C

Max Surface Temp: 22.23°C

Water Temp Out: 20.30°C

D6 STANDARD- HB-2P-0600-CU-C



PARAMETERS

Fluid: Water

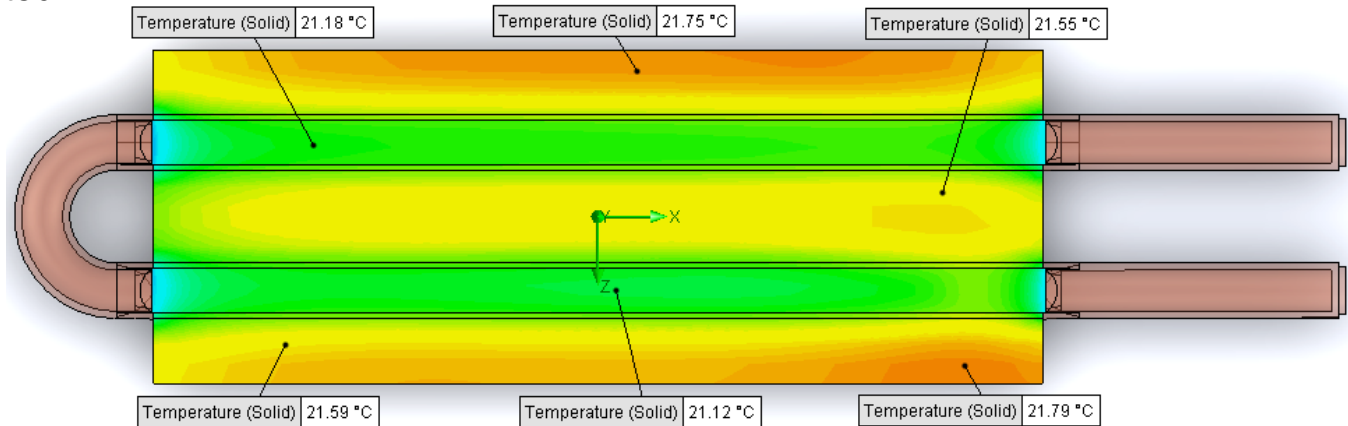
Inlet Flow: 2 gpm

Inlet Fluid Temp: 20°C

Heat Source: 100W distributed

Surface Area: 2.25" x 6.00"

Tube: 3/8 OD Copper



Simulation Data

Goal Name	Unit	Value
SG Min Temperature (Solid) 1	[°C]	20.42030154
SG Av Temperature (Solid) 1	[°C]	21.44560023
SG Max Temperature (Solid) 1	[°C]	21.83892231
WATER OUT	[°C]	20.24413791
PRESSURE DROP	[lbf/in^2]	2.004963077

SG-Surface goal is a parameter on selected surface(s).
In this case, it is the entire tube side surface area.

RESULTS

Thermal Resistance: 0.0144°C/W

Pressure Drop: 2.00psi

Min Surface Temp: 20.42°C

Max Surface Temp: 21.83°C

Water Temp Out: 20.24°C