



D6 INDUSTRIES  
STANDARD PRODUCT  
HT-TAP600-5  
SIMULATION RESULTS

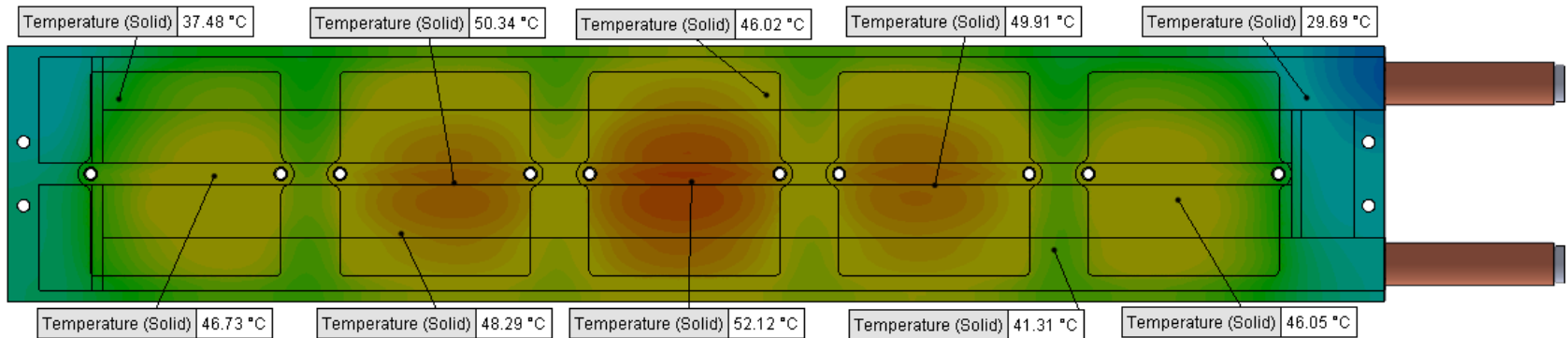
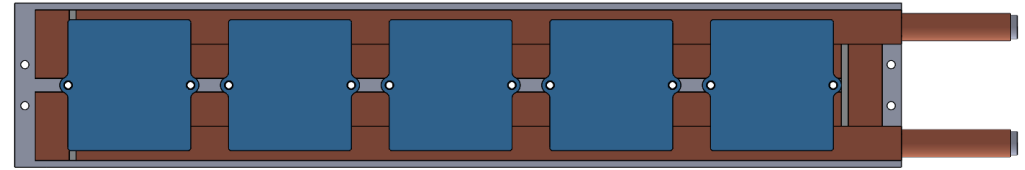
1-3 gpm flow rates  
5X 600W Heat Load

# D6 STANDARD HT-TAP600-5



## PARAMETERS

Fluid: Water  
 Inlet Flow: 1 gpm  
 Inlet Fluid Temp: 20°C  
 Heat Source: 5 blue squares= 3000W (shown right)  
 Tube: ½ OD round copper inlet/outlet



## Simulation Data

Goal Name	Unit	Value
SG Min Temperature (Solid) 1	[°C]	24.90257464
SG Av Temperature (Solid) 1	[°C]	42.87177189
SG Max Temperature (Solid) 1	[°C]	52.65143466
SG FLUID OUT	[°C]	31.26099872
PRESSURE DROP	[lbf/in <sup>2</sup> ]	1.33166174

## RESULTS

Thermal Resistance: 0.0076°C/W  
 Pressure Drop: 1.33psi  
 Min Surface Temp: 24.90°C  
 Max Surface Temp: 52.65°C  
 Water Temp Out: 31.26°C

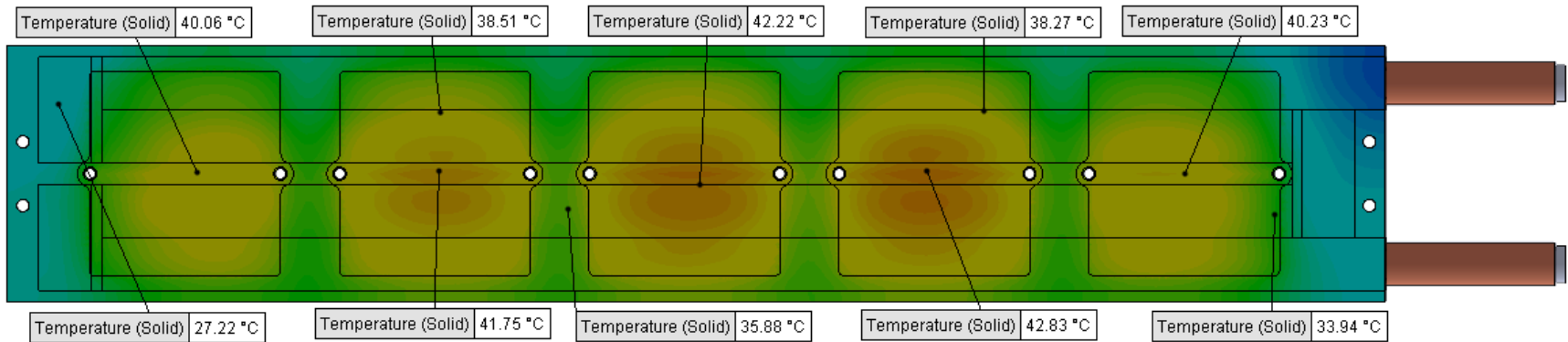
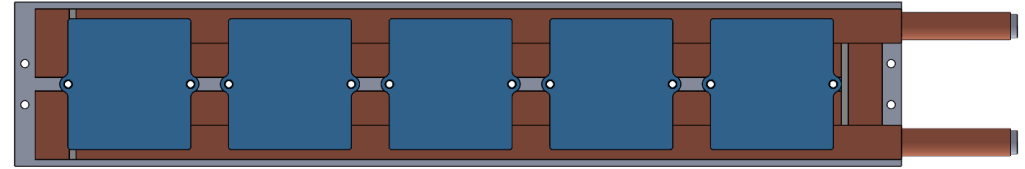
SG-Surface goal is a parameter on selected surface(s).  
 In this case, it is the entire tube side surface area.

# D6 STANDARD HT-TAP600-5



## PARAMETERS

Fluid: Water  
 Inlet Flow: 1.5 gpm  
 Inlet Fluid Temp: 20°C  
 Heat Source: 5 blue squares= 3000W (shown right)  
 Tube: ½ OD round copper inlet/outlet



## Simulation Data

Goal Name	Unit	Value
SG Min Temperature (Solid) 1	[°C]	22.87942109
SG Av Temperature (Solid) 1	[°C]	35.8487996
SG Max Temperature (Solid) 1	[°C]	43.16572864
SG FLUID OUT	[°C]	27.48679871
PRESSURE DROP	[lbf/in^2]	2.962716169

## RESULTS

Thermal Resistance: 0.0052°C/W  
 Pressure Drop: 2.96psi  
 Min Surface Temp: 22.87°C  
 Max Surface Temp: 43.16°C  
 Water Temp Out: 27.48°C

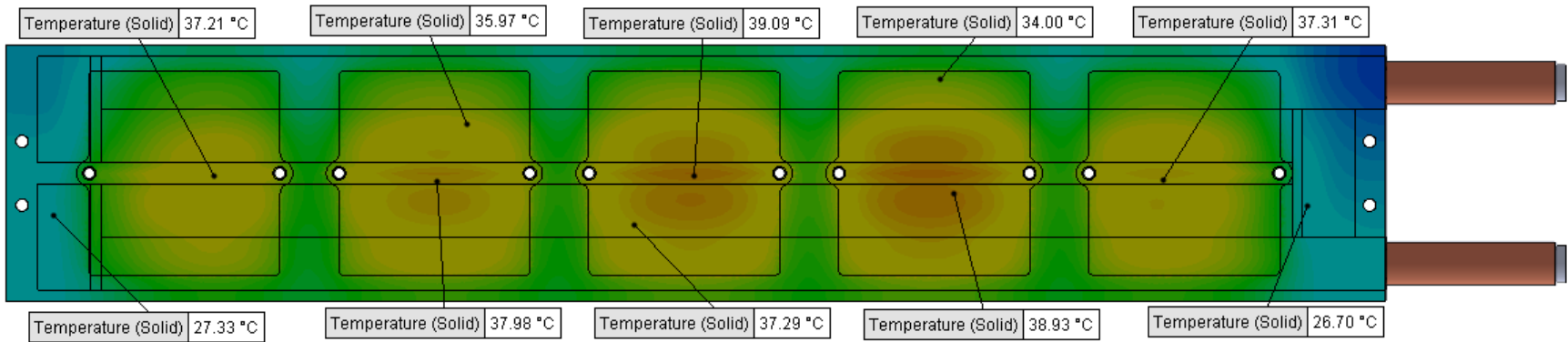
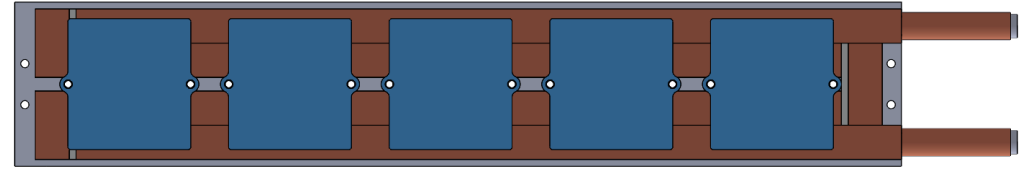
SG-Surface goal is a parameter on selected surface(s).  
 In this case, it is the entire tube side surface area.

# D6 STANDARD HT-TAP600-5



## PARAMETERS

Fluid: Water  
 Inlet Flow: 2 gpm  
 Inlet Fluid Temp: 20°C  
 Heat Source: 5 blue squares= 3000W (shown right)  
 Tube: ½ OD round copper inlet/outlet



## Simulation Data

Goal Name	Unit	Value
SG Min Temperature (Solid) 1	[°C]	21.93796793
SG Av Temperature (Solid) 1	[°C]	32.91621841
SG Max Temperature (Solid) 1	[°C]	39.63008451
SG FLUID OUT	[°C]	25.61730882
PRESSURE DROP	[lbf/in <sup>2</sup> ]	5.26245121

## RESULTS

Thermal Resistance: 0.0043°C/W  
 Pressure Drop: 5.26psi  
 Min Surface Temp: 21.93°C  
 Max Surface Temp: 39.63°C  
 Water Temp Out: 25.61°C

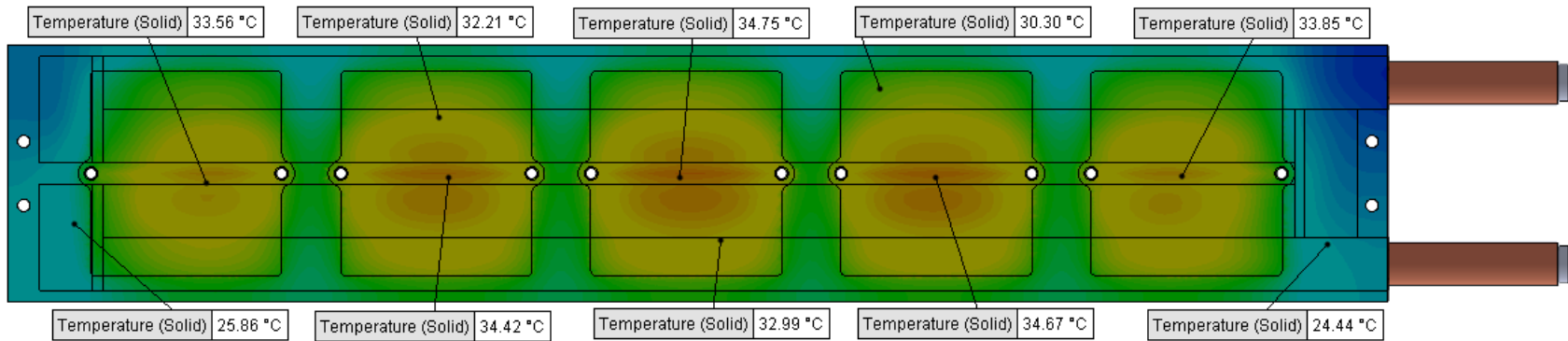
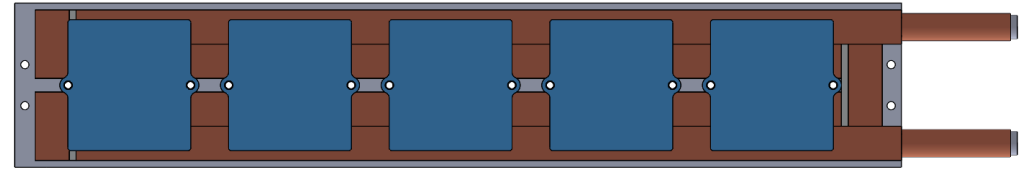
SG-Surface goal is a parameter on selected surface(s).  
 In this case, it is the entire tube side surface area.

# D6 STANDARD HT-TAP600-5



## PARAMETERS

Fluid: Water  
 Inlet Flow: 3 gpm  
 Inlet Fluid Temp: 20°C  
 Heat Source: 5 blue squares= 3000W (shown right)  
 Tube: ½ OD round copper inlet/outlet



## Simulation Data

Goal Name	Unit	Value
SG Min Temperature (Solid) 1	[°C]	21.06374821
SG Av Temperature (Solid) 1	[°C]	29.50229255
SG Max Temperature (Solid) 1	[°C]	35.09316489
SG FLUID OUT	[°C]	23.8039051
PRESSURE DROP	[lbf/in^2]	11.8646683

## RESULTS

Thermal Resistance: 0.0031°C/W  
 Pressure Drop: 11.86psi  
 Min Surface Temp: 21.06°C  
 Max Surface Temp: 35.09°C  
 Water Temp Out: 23.80°C

SG-Surface goal is a parameter on selected surface(s).  
 In this case, it is the entire tube side surface area.