



D6 INDUSTRIES
STANDARD PRODUCT
HT-TAP600-4
SIMULATION RESULTS

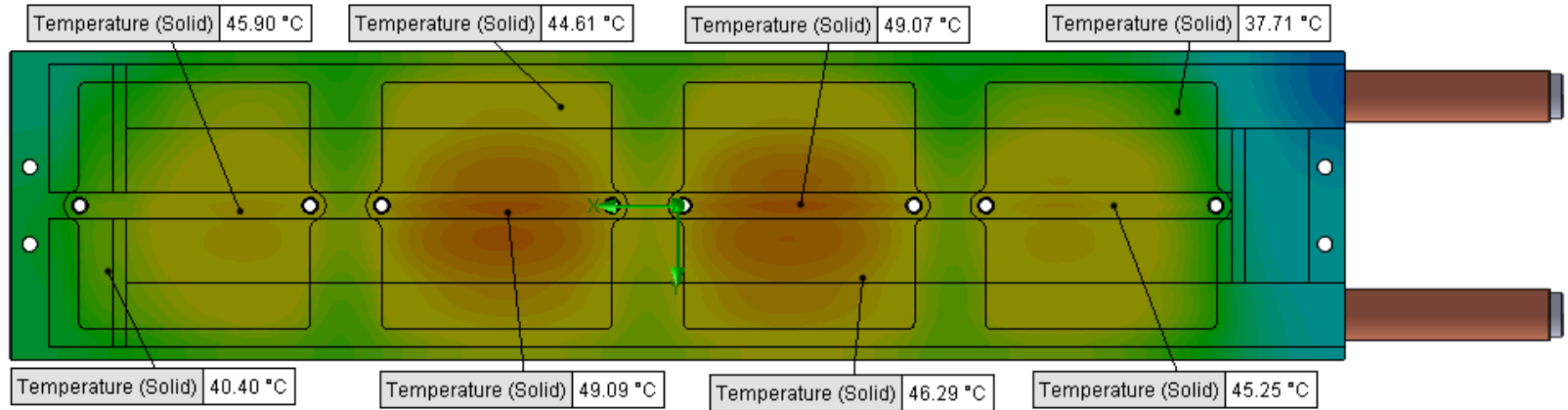
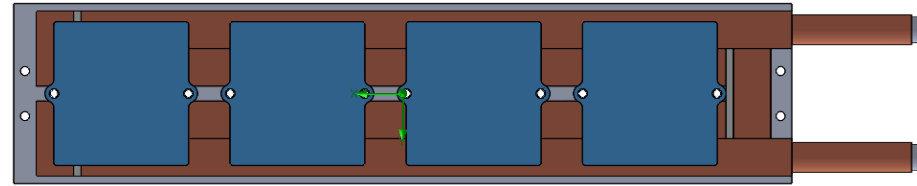
1-3 gpm flow rates
4X 600W Heat Load

D6 STANDARD HT-TAP600-4



PARAMETERS

Fluid: Water
 Inlet Flow: 1 gpm
 Inlet Fluid Temp: 20°C
 Heat Source: 4 blue squares= 2400W (shown right)
 Tube: ½ OD round copper inlet/outlet



Simulation Data

Goal Name	Unit	Value
SG Min Temperature (Solid) 1	[°C]	24.61849819
SG Av Temperature (Solid) 1	[°C]	41.10682894
SG Max Temperature (Solid) 1	[°C]	49.21864597
SG FLUID OUT	[°C]	29.08042419
PRESSURE DROP	[lbf/in ²]	1.334711115

RESULTS

Thermal Resistance: 0.0087°C/W
 Pressure Drop: 1.33psi
 Min Surface Temp: 24.61°C
 Max Surface Temp: 49.21°C
 Water Temp Out: 29.08°C

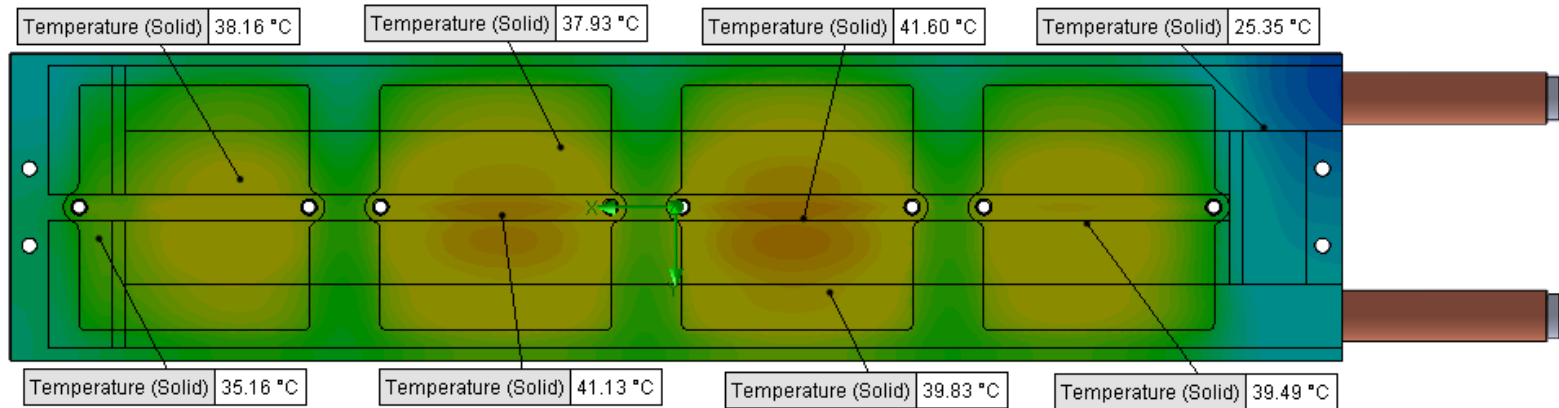
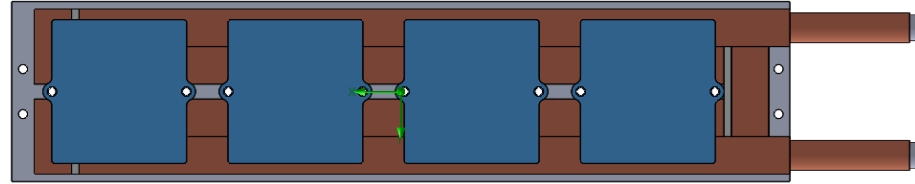
SG-Surface goal is a parameter on selected surface(s).
 In this case, it is the entire tube side surface area.

D6 STANDARD HT-TAP600-4



PARAMETERS

Fluid: Water
 Inlet Flow: 1.5 gpm
 Inlet Fluid Temp: 20°C
 Heat Source: 4 blue squares= 2400W (shown right)
 Tube: ½ OD round copper inlet/outlet



Simulation Data

Goal Name	Unit	Value
SG Min Temperature (Solid) 1	[°C]	22.67042894
SG Av Temperature (Solid) 1	[°C]	34.77882352
SG Max Temperature (Solid) 1	[°C]	41.83087015
SG FLUID OUT	[°C]	26.0568653
PRESSURE DROP	[lbf/in^2]	2.961157456

SG-Surface goal is a parameter on selected surface(s).
 In this case, it is the entire tube side surface area.

RESULTS

Thermal Resistance: 0.0061°C/W
 Pressure Drop: 2.96psi
 Min Surface Temp: 22.67°C
 Max Surface Temp: 41.83°C
 Water Temp Out: 26.05°C

D6 STANDARD HT-TAP600-4



PARAMETERS

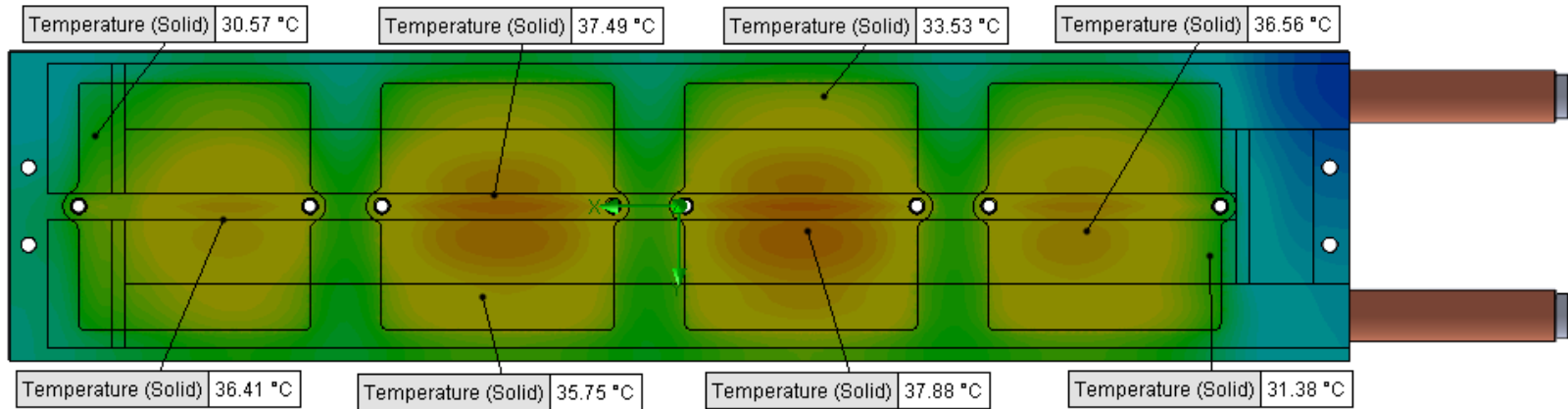
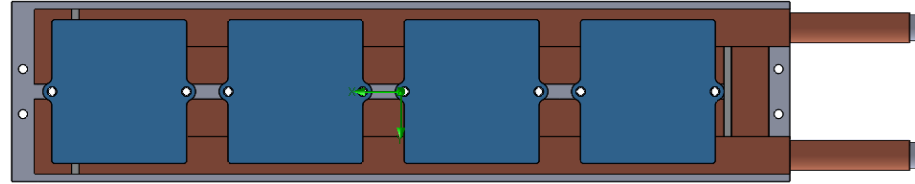
Fluid: Water

Inlet Flow: 2 gpm

Inlet Fluid Temp: 20°C

Heat Source: 4 blue squares= 2400W (shown right)

Tube: ½ OD round copper inlet/outlet



Simulation Data

Goal Name	Unit	Value
SG Min Temperature (Solid) 1	[°C]	21.79240735
SG Av Temperature (Solid) 1	[°C]	32.04873264
SG Max Temperature (Solid) 1	[°C]	38.32718851
SG FLUID OUT	[°C]	24.5556017
PRESSURE DROP	[lbf/in^2]	5.25251442

SG-Surface goal is a parameter on selected surface(s).
In this case, it is the entire tube side surface area.

RESULTS

Thermal Resistance: 0.0050°C/W

Pressure Drop: 5.25psi

Min Surface Temp: 21.79°C

Max Surface Temp: 38.32°C

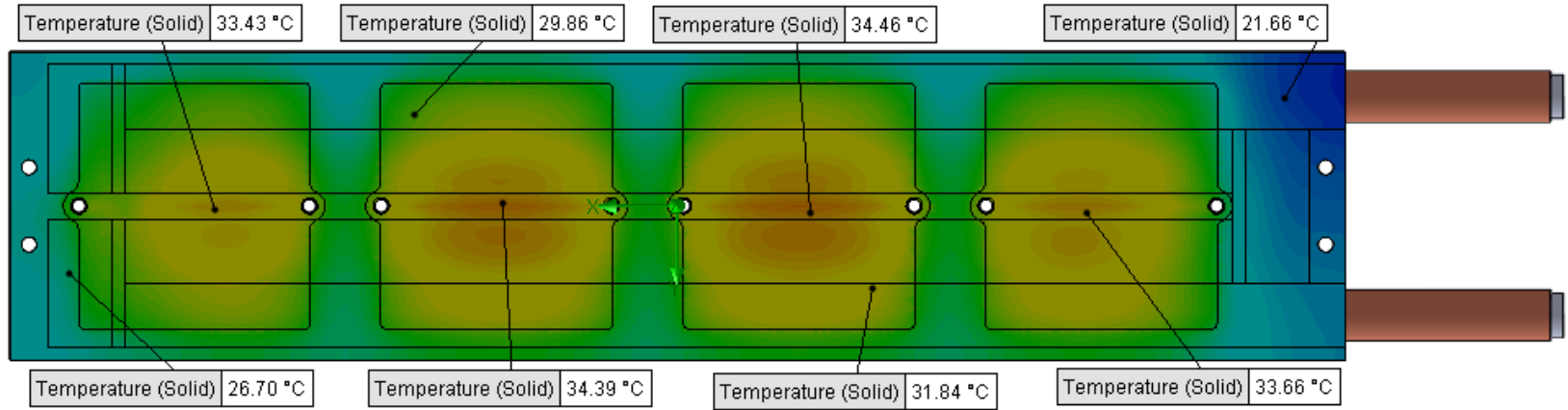
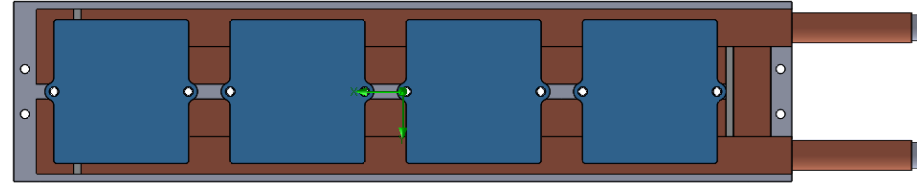
Water Temp Out: 24.55°C

D6 STANDARD HT-TAP600-4



PARAMETERS

Fluid: Water
 Inlet Flow: 3 gpm
 Inlet Fluid Temp: 20°C
 Heat Source: 4 blue squares= 2400W (shown right)
 Tube: ½ OD round copper inlet/outlet



Simulation Data

Goal Name	Unit	Value
SG Min Temperature (Solid) 1	[°C]	20.96695941
SG Av Temperature (Solid) 1	[°C]	29.11583719
SG Max Temperature (Solid) 1	[°C]	34.67020878
SG FLUID OUT	[°C]	23.05644593
PRESSURE DROP	[lbf/in ²]	11.75106939

RESULTS

Thermal Resistance: 0.0037°C/W
 Pressure Drop: 11.75psi
 Min Surface Temp: 20.96°C
 Max Surface Temp: 34.67°C
 Water Temp Out: 23.05°C

SG-Surface goal is a parameter on selected surface(s).
 In this case, it is the entire tube side surface area.