



D6 INDUSTRIES
STANDARD PRODUCT
HT-TAP600-3
SIMULATION RESULTS

1-3 gpm flow rates
3X 600W Heat Load

D6 STANDARD HT-TAP600-3



PARAMETERS

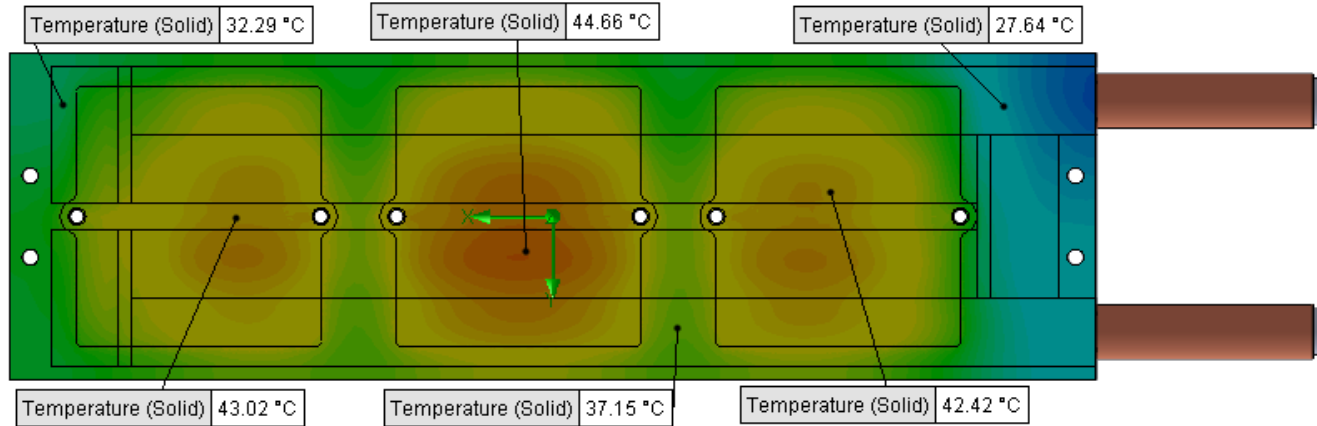
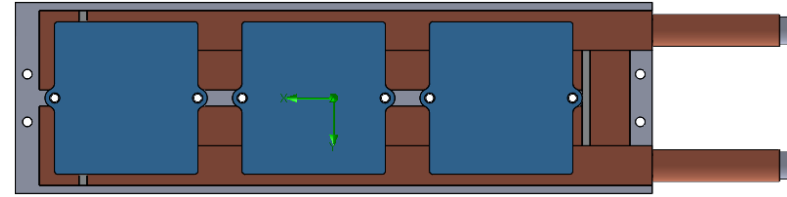
Fluid: Water

Inlet Flow: 1 gpm

Inlet Fluid Temp: 20°C

Heat Source: 3 blue squares=1800W (shown right)

Tube: ½ OD round copper inlet/outlet



Simulation Data

Goal Name	Unit	Value
SG Min Temperature (Solid) 1	[°C]	24.02239499
SG Av Temperature (Solid) 1	[°C]	37.69964262
SG Max Temperature (Solid) 1	[°C]	44.87393084
SG FLUID OUT	[°C]	26.82451373
PRESSURE DROP	[lbf/in ²]	1.292319426

RESULTS

Thermal Resistance: 0.0098°C/W

Pressure Drop: 1.29psi

Min Surface Temp: 24.02°C

Max Surface Temp: 44.87°C

Water Temp Out: 26.82°C

SG-Surface goal is a parameter on selected surface(s).
In this case, it is the entire tube side surface area.

D6 STANDARD HT-TAP600-3



PARAMETERS

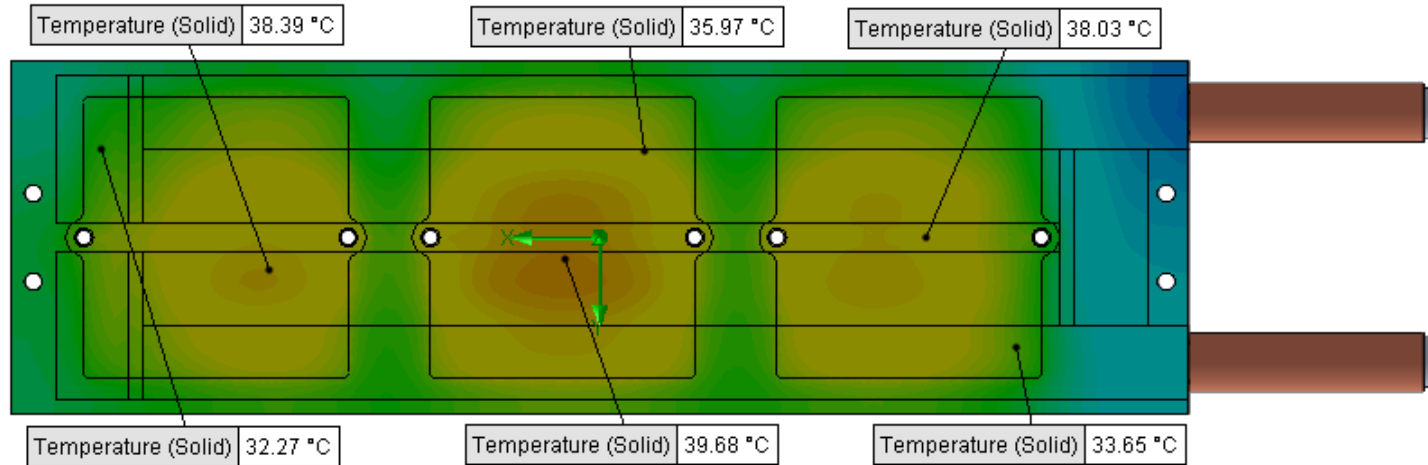
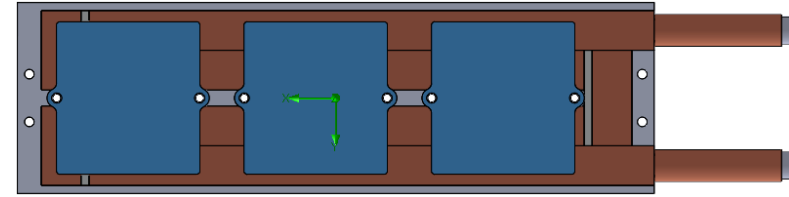
Fluid: Water

Inlet Flow: 1.5 gpm

Inlet Fluid Temp: 20°C

Heat Source: 3 blue squares=1800W (shown right)

Tube: ½ OD round copper inlet/outlet



Simulation Data

Goal Name	Unit	Value
SG Min Temperature (Solid) 1	[°C]	22.41803809
SG Av Temperature (Solid) 1	[°C]	33.44825683
SG Max Temperature (Solid) 1	[°C]	40.02042017
SG FLUID OUT	[°C]	24.55568192
PRESSURE DROP	[lbf/in ²]	2.857488466

SG-Surface goal is a parameter on selected surface(s).
In this case, it is the entire tube side surface area.

RESULTS

Thermal Resistance: 0.0074°C/W

Pressure Drop: 2.85psi

Min Surface Temp: 22.41°C

Max Surface Temp: 40.02°C

Water Temp Out: 24.55°C

D6 STANDARD HT-TAP600-3



PARAMETERS

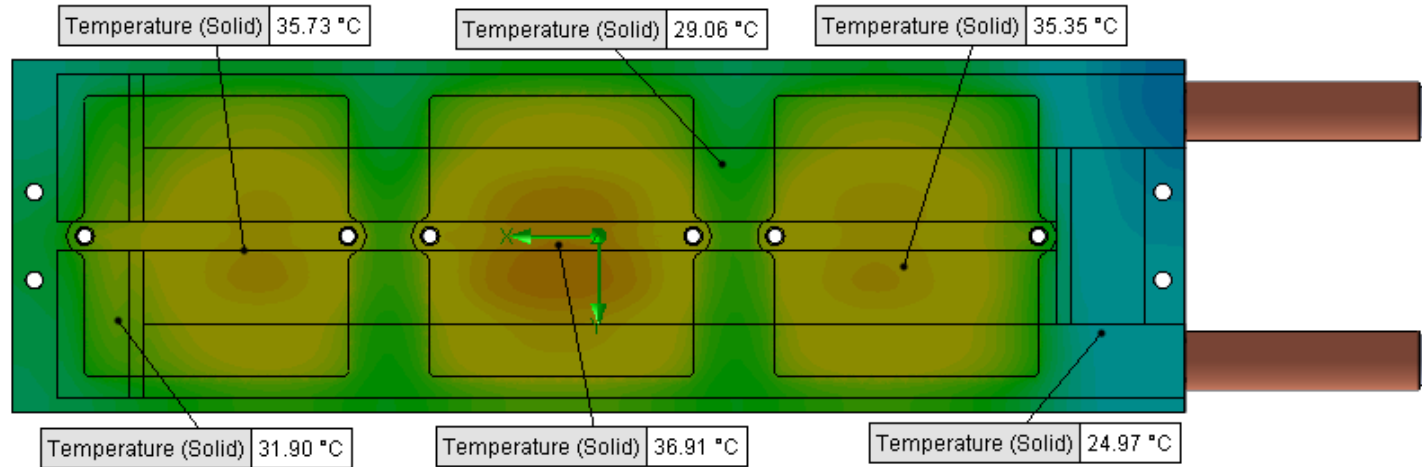
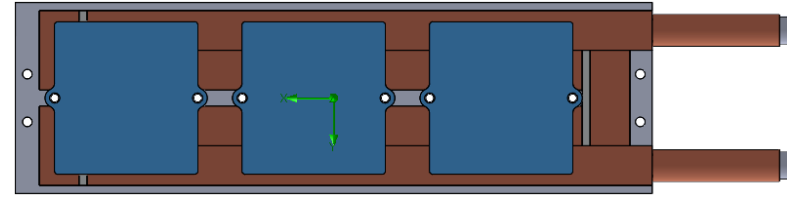
Fluid: Water

Inlet Flow: 2 gpm

Inlet Fluid Temp: 20°C

Heat Source: 3 blue squares=1800W (shown right)

Tube: ½ OD round copper inlet/outlet



Simulation Data

Goal Name	Unit	Value
SG Min Temperature (Solid) 1	[°C]	21.60504026
SG Av Temperature (Solid) 1	[°C]	31.0187128
SG Max Temperature (Solid) 1	[°C]	37.14746687
SG FLUID OUT	[°C]	23.42043864
PRESSURE DROP	[lbf/in^2]	5.058455812

RESULTS

Thermal Resistance: 0.0061°C/W

Pressure Drop: 5.05psi

Min Surface Temp: 21.60°C

Max Surface Temp: 37.14°C

Water Temp Out: 23.42°C

SG-Surface goal is a parameter on selected surface(s).
In this case, it is the entire tube side surface area.

D6 STANDARD HT-TAP600-3



PARAMETERS

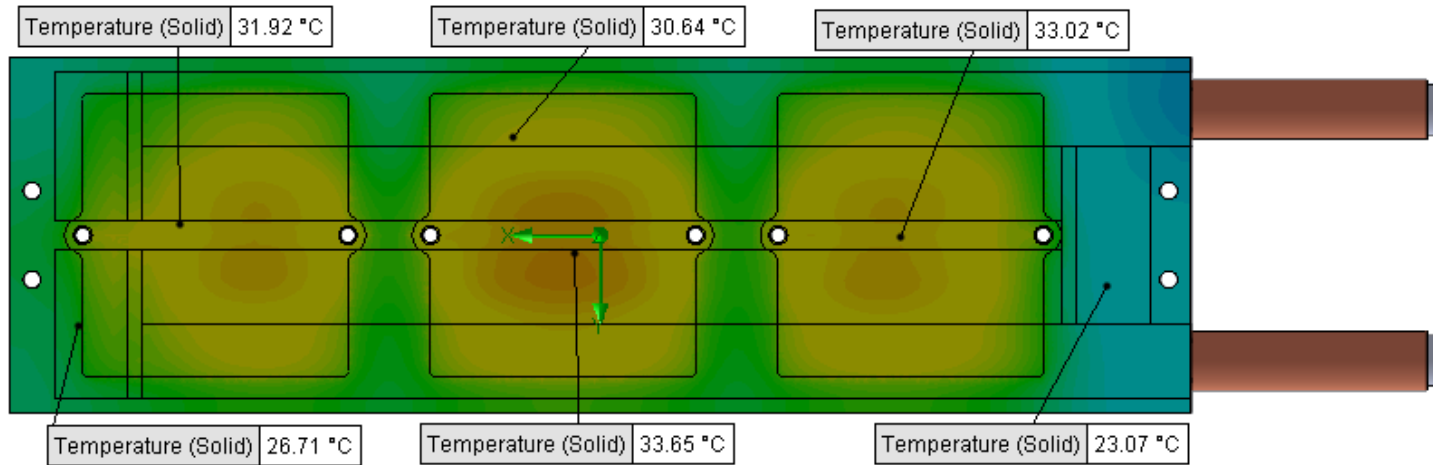
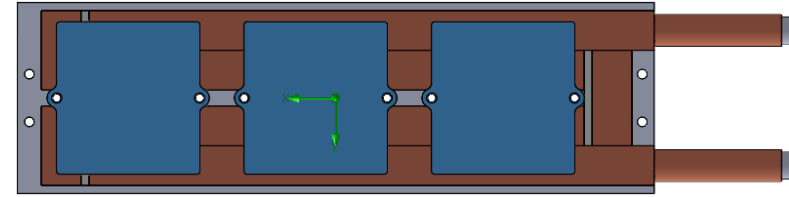
Fluid: Water

Inlet Flow: 3 gpm

Inlet Fluid Temp: 20°C

Heat Source: 3 blue squares=1800W (shown right)

Tube: ½ OD round copper inlet/outlet



Simulation Data

Goal Name	Unit	Value
SG Min Temperature (Solid) 1	[°C]	20.85672378
SG Av Temperature (Solid) 1	[°C]	28.51123453
SG Max Temperature (Solid) 1	[°C]	33.96526002
SG FLUID OUT	[°C]	22.29208501
PRESSURE DROP	[lbf/in ²]	11.35239848

RESULTS

Thermal Resistance: 0.0047°C/W

Pressure Drop: 11.35psi

Min Surface Temp: 20.85°C

Max Surface Temp: 33.96°C

Water Temp Out: 22.29°C

SG-Surface goal is a parameter on selected surface(s).
In this case, it is the entire tube side surface area.