



D6 INDUSTRIES
STANDARD PRODUCT
HT-TAP600-2
SIMULATION RESULTS

1-3 gpm flow rates
2X 600W Heat Load

D6 STANDARD HT-TAP600-2



PARAMETERS

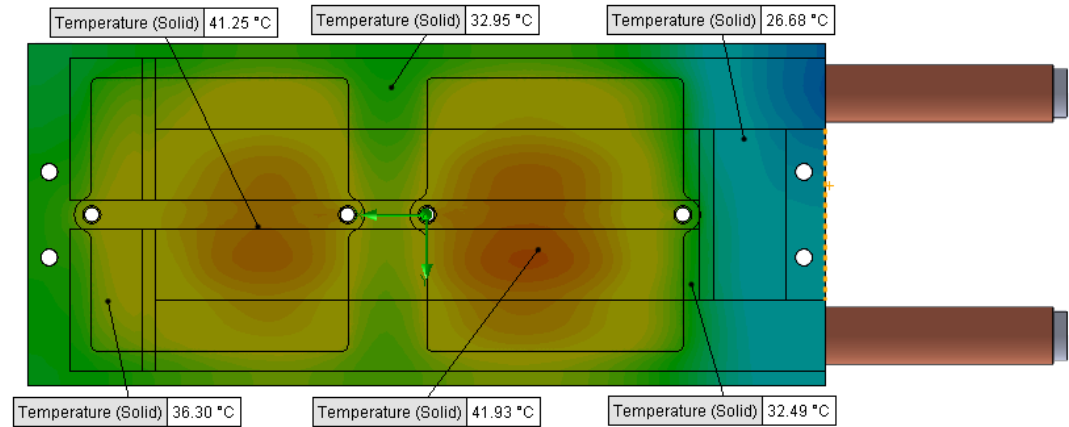
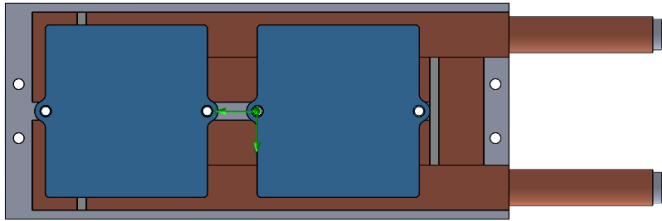
Fluid: Water

Inlet Flow: 1 gpm

Inlet Fluid Temp: 20°C

Heat Source: 2 blue squares=1200W (shown below)

Tube: ½ OD round copper inlet/outlet



Simulation Data

Goal Name	Unit	Value
SG Min Temperature (Solid) 1	[°C]	23.34250655
SG Av Temperature (Solid) 1	[°C]	35.33571334
SG Max Temperature (Solid) 1	[°C]	42.17681499
SG FLUID OUT	[°C]	24.56233712
PRESSURE DROP	[lbf/in^2]	1.234398912

SG-Surface goal is a parameter on selected surface(s).
In this case, it is the entire tube side surface area.

RESULTS

Thermal Resistance: 0.0127°C/W

Pressure Drop: 1.23psi

Min Surface Temp: 23.34°C

Max Surface Temp: 42.17°C

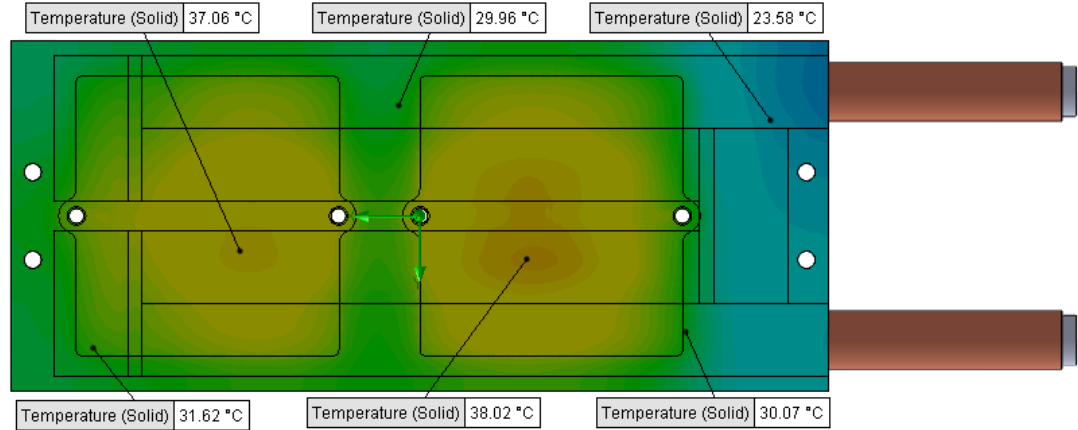
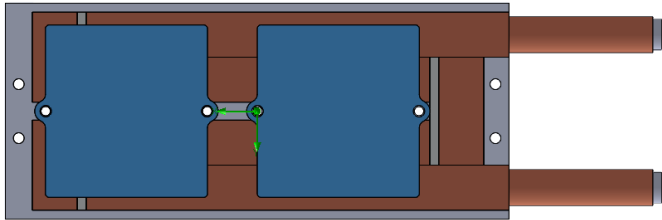
Water Temp Out: 24.56°C

D6 STANDARD HT-TAP600-2



PARAMETERS

Fluid: Water
 Inlet Flow: 1.5 gpm
 Inlet Fluid Temp: 20°C
 Heat Source: 2 blue squares=1200W (shown below)
 Tube: ½ OD round copper inlet/outlet



Simulation Data

Goal Name	Unit	Value
SG Min Temperature (Solid) 1	[°C]	22.02189313
SG Av Temperature (Solid) 1	[°C]	31.84532567
SG Max Temperature (Solid) 1	[°C]	38.3145034
SG FLUID OUT	[°C]	23.04318213
PRESSURE DROP	[lbf/in ²]	2.750758591

SG-Surface goal is a parameter on selected surface(s).
 In this case, it is the entire tube side surface area.

RESULTS

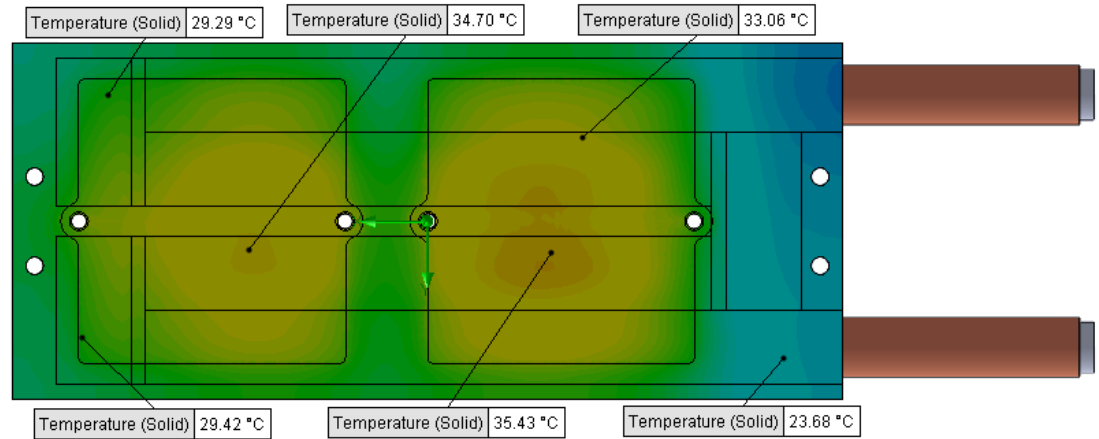
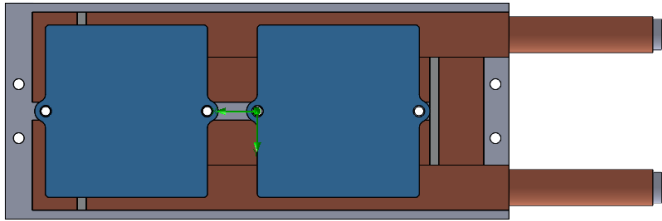
Thermal Resistance: 0.0098°C/W
 Pressure Drop: 2.75psi
 Min Surface Temp: 22.02°C
 Max Surface Temp: 38.31°C
 Water Temp Out: 23.04°C

D6 STANDARD HT-TAP600-2



PARAMETERS

Fluid: Water
 Inlet Flow: 2 gpm
 Inlet Fluid Temp: 20°C
 Heat Source: 2 blue squares=1200W (shown below)
 Tube: ½ OD round copper inlet/outlet



Simulation Data

Goal Name	Unit	Value
SG Min Temperature (Solid) 1	[°C]	21.32070444
SG Av Temperature (Solid) 1	[°C]	29.85058293
SG Max Temperature (Solid) 1	[°C]	35.91886737
SG FLUID OUT	[°C]	22.28816436
PRESSURE DROP	[lbf/in ²]	4.885044624

SG-Surface goal is a parameter on selected surface(s).
 In this case, it is the entire tube side surface area.

RESULTS

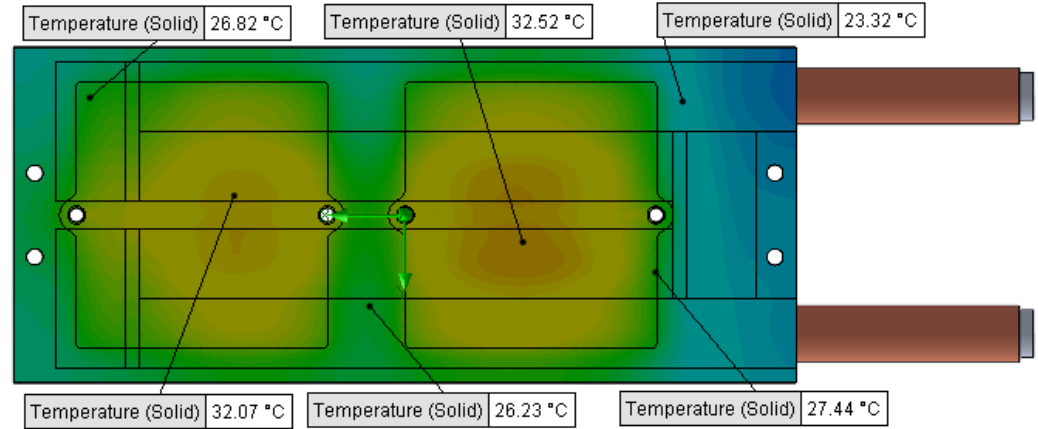
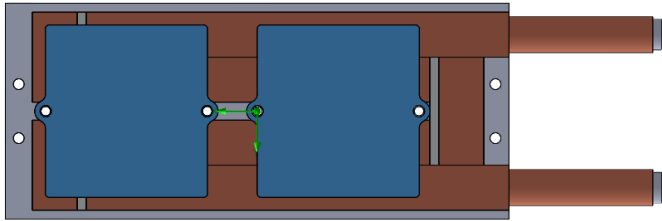
Thermal Resistance: 0.0082°C/W
 Pressure Drop: 4.88psi
 Min Surface Temp: 21.32°C
 Max Surface Temp: 35.91°C
 Water Temp Out: 22.28°C

D6 STANDARD HT-TAP600-2



PARAMETERS

Fluid: Water
 Inlet Flow: 3 gpm
 Inlet Fluid Temp: 20°C
 Heat Source: 2 blue squares=1200W (shown below)
 Tube: ½ OD round copper inlet/outlet



Simulation Data

Goal Name	Unit	Value
SG Min Temperature (Solid) 1	[°C]	20.68056688
SG Av Temperature (Solid) 1	[°C]	27.63658339
SG Max Temperature (Solid) 1	[°C]	33.09803474
SG FLUID OUT	[°C]	21.53618426
PRESSURE DROP	[lbf/in^2]	10.97135613

SG-Surface goal is a parameter on selected surface(s).
 In this case, it is the entire tube side surface area.

RESULTS

Thermal Resistance: 0.0063°C/W
 Pressure Drop: 10.97psi
 Min Surface Temp: 20.68°C
 Max Surface Temp: 33.09°C
 Water Temp Out: 21.53°C