



D6 INDUSTRIES
STANDARD PRODUCT
HT-TAP600-1
SIMULATION RESULTS

1-3 gpm flow rates
600W Heat Load

D6 STANDARD HT-TAP600-1 (1gpm)



PARAMETERS

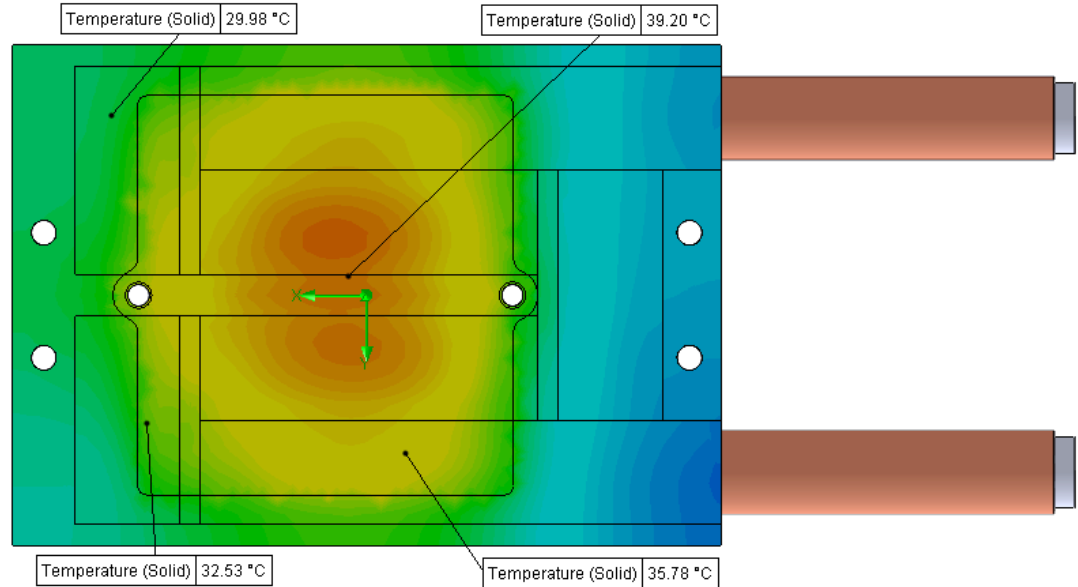
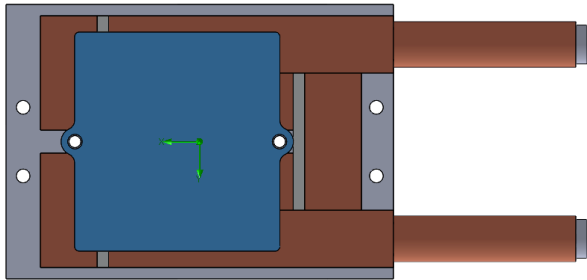
Fluid: Water

Inlet Flow: 1 gpm

Inlet Fluid Temp: 20°C

Heat Source: 1 blue square=600W (shown below)

Tube: ½ OD round copper inlet/outlet



Simulation Data

Goal Name	Unit	Value
SG Min Temperature (Solid) 1	[°C]	23.00642699
SG Av Temperature (Solid) 1	[°C]	31.45828438
SG Max Temperature (Solid) 1	[°C]	39.44990111
WATER OUT	[°C]	22.28319322
PRESSURE DROP	[lbf/in^2]	1.273992287

SG-Surface goal is a parameter on selected surface(s).
In this case, it is the entire tube side surface area.

RESULTS

Thermal Resistance: 0.019°C/W

Pressure Drop: 1.27psi

Min Surface Temp: 23.00°C

Max Surface Temp: 39.44°C

Water Temp Out: 22.28°C

D6 STANDARD HT-TAP600-1 (1.5gpm)



PARAMETERS

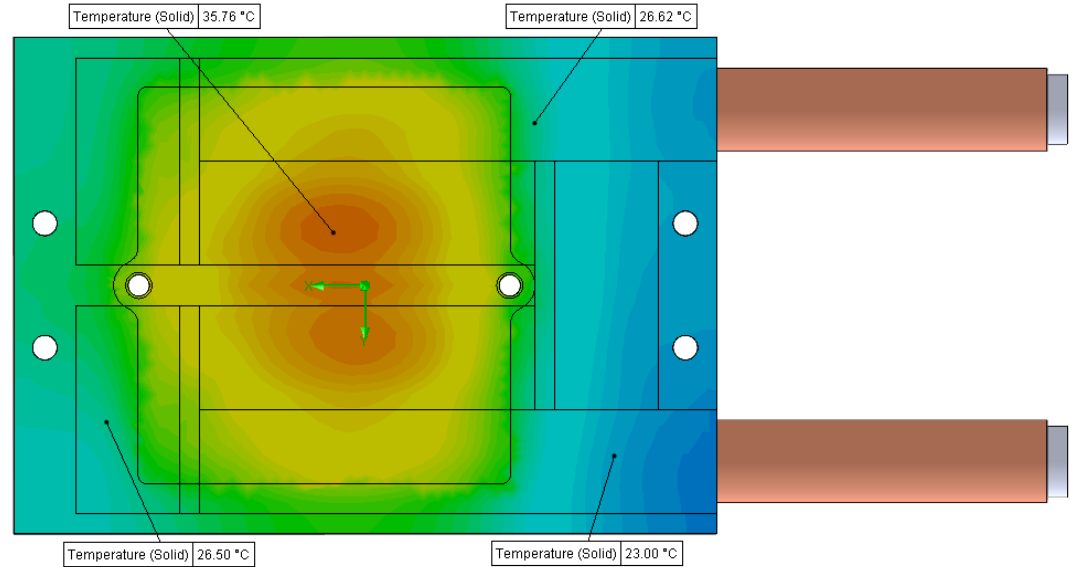
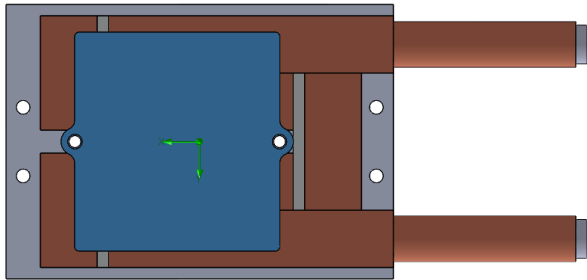
Fluid: Water

Inlet Flow: 1.5 gpm

Inlet Fluid Temp: 20°C

Heat Source: 1 blue square=600W (shown below)

Tube: ½ OD round copper inlet/outlet



Simulation Data

Goal Name	Unit	Value
SG Min Temperature (Solid) 1	[°C]	21.81138064
SG Av Temperature (Solid) 1	[°C]	28.82732792
SG Max Temperature (Solid) 1	[°C]	36.18963375
WATER OUT	[°C]	21.52251355
PRESSURE DROP	[lbf/in ²]	2.846601017

SG-Surface goal is a parameter on selected surface(s).
In this case, it is the entire tube side surface area.

RESULTS

Thermal Resistance: 0.0147°C/W

Pressure Drop: 2.84psi

Min Surface Temp: 21.81°C

Max Surface Temp: 36.18°C

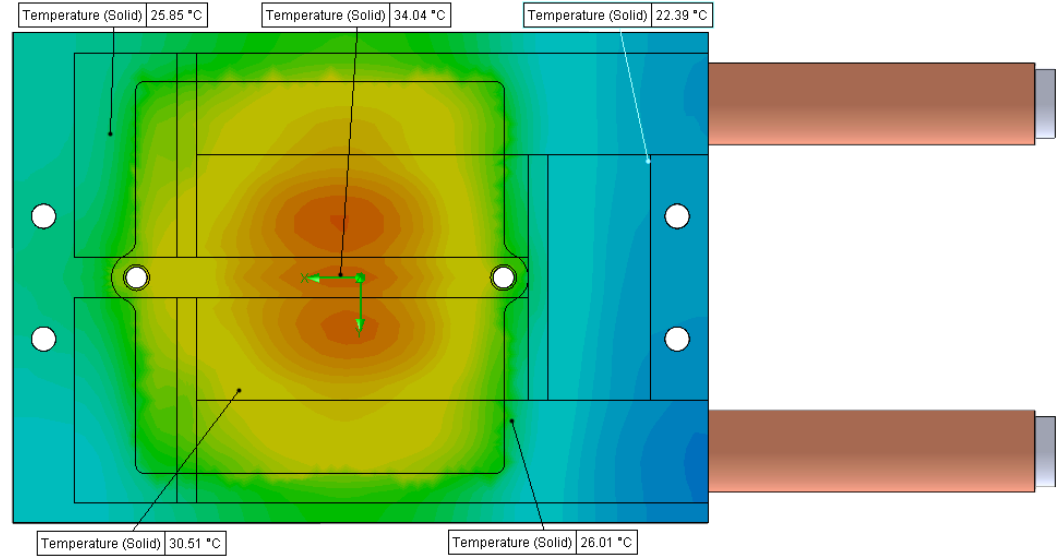
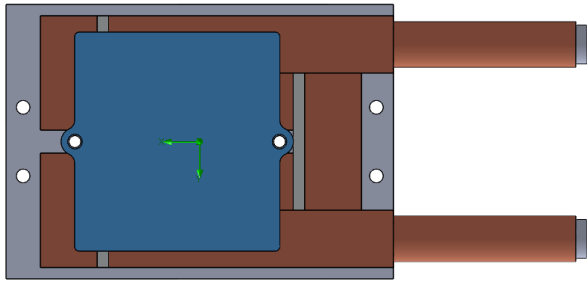
Water Temp Out: 21.52°C

D6 STANDARD HT-TAP600-1 (2gpm)



PARAMETERS

Fluid: Water
 Inlet Flow: 2 gpm
 Inlet Fluid Temp: 20°C
 Heat Source: 1 blue square=600W (shown below)
 Tube: ½ OD round copper inlet/outlet



Simulation Data

Goal Name	Unit	Value
SG Min Temperature (Solid) 1	[°C]	21.24260655
SG Av Temperature (Solid) 1	[°C]	27.36735444
SG Max Temperature (Solid) 1	[°C]	34.32720028
WATER OUT	[°C]	21.14737948
PRESSURE DROP	[lbf/in ²]	5.027525077

RESULTS

Thermal Resistance: 0.0122°C/W
 Pressure Drop: 5.02psi
 Min Surface Temp: 21.24°C
 Max Surface Temp: 34.32°C
 Water Temp Out: 21.14°C

SG-Surface goal is a parameter on selected surface(s).
 In this case, it is the entire tube side surface area.

D6 STANDARD HT-TAP600-1 (3gpm)



PARAMETERS

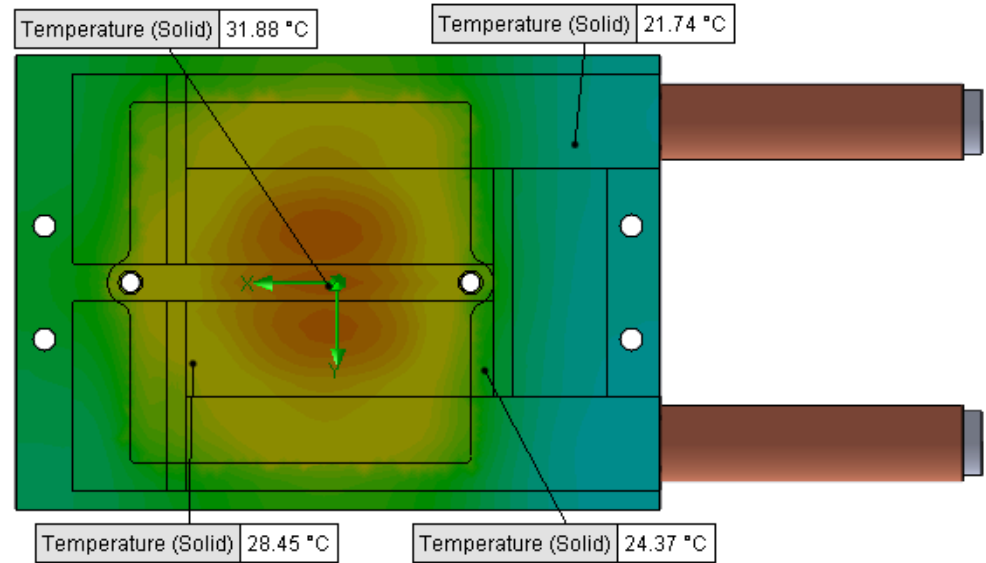
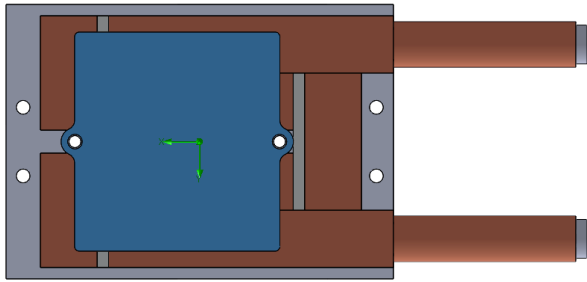
Fluid: Water

Inlet Flow: 3 gpm

Inlet Fluid Temp: 20°C

Heat Source: 1 blue square=600W (shown below)

Tube: ½ OD round copper inlet/outlet



Simulation Data

Goal Name	Unit	Value
SG Min Temperature (Solid) 1	[°C]	20.67993317
SG Av Temperature (Solid) 1	[°C]	25.7516464
SG Max Temperature (Solid) 1	[°C]	32.16181553
WATER OUT	[°C]	20.77712827
PRESSURE DROP	[lbf/in^2]	11.2353496

SG-Surface goal is a parameter on selected surface(s).
In this case, it is the entire tube side surface area.

RESULTS

Thermal Resistance: 0.0095°C/W

Pressure Drop: 11.23psi

Min Surface Temp: 20.67°C

Max Surface Temp: 32.16°C

Water Temp Out: 20.77°C