



**D6 INDUSTRIES**  
**STANDARD PRODUCT**  
**HT-TAP2000-3**  
**SIMULATION RESULTS**

1-3 gpm flow rates  
3X 2000W Heat Load

# D6 STANDARD HT-TAP2000-3



## PARAMETERS

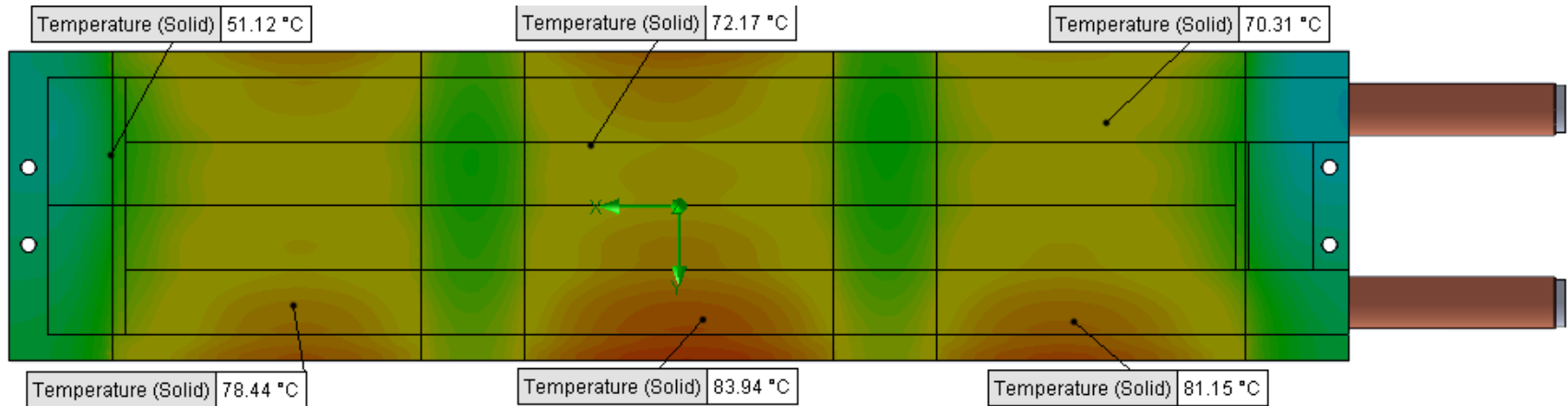
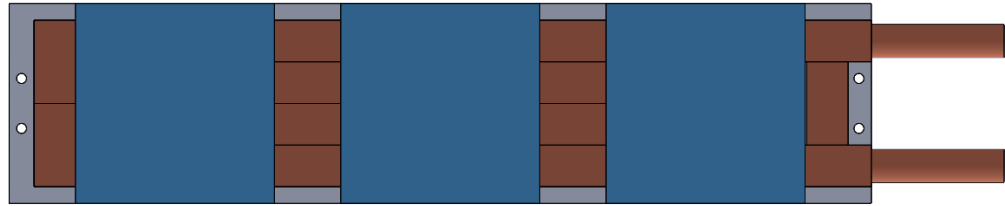
Fluid: Water

Inlet Flow: 1 gpm

Inlet Fluid Temp: 20°C

Heat Source: 3 blue squares=6000W

Tube: ½ OD round copper inlet/outlet



## Simulation Data

Goal Name	Unit	Value
SG Min Temperature (Solid) 1	[°C]	32.78544512
SG Av Temperature (Solid) 1	[°C]	66.715895
SG Max Temperature (Solid) 1	[°C]	87.61922857
FLUID OUT	[°C]	42.72666989
PRESSURE DROP	[lbf/in <sup>2</sup> ]	1.300473669

## RESULTS

Thermal Resistance: 0.0077°C/W

Pressure Drop: 1.30psi

Min Surface Temp: 32.78°C

Max Surface Temp: 87.61°C

Water Temp Out: 42.72°C

SG-Surface goal is a parameter on selected surface(s).  
In this case, it is the entire tube side surface area.

# D6 STANDARD HT-TAP2000-3



## PARAMETERS

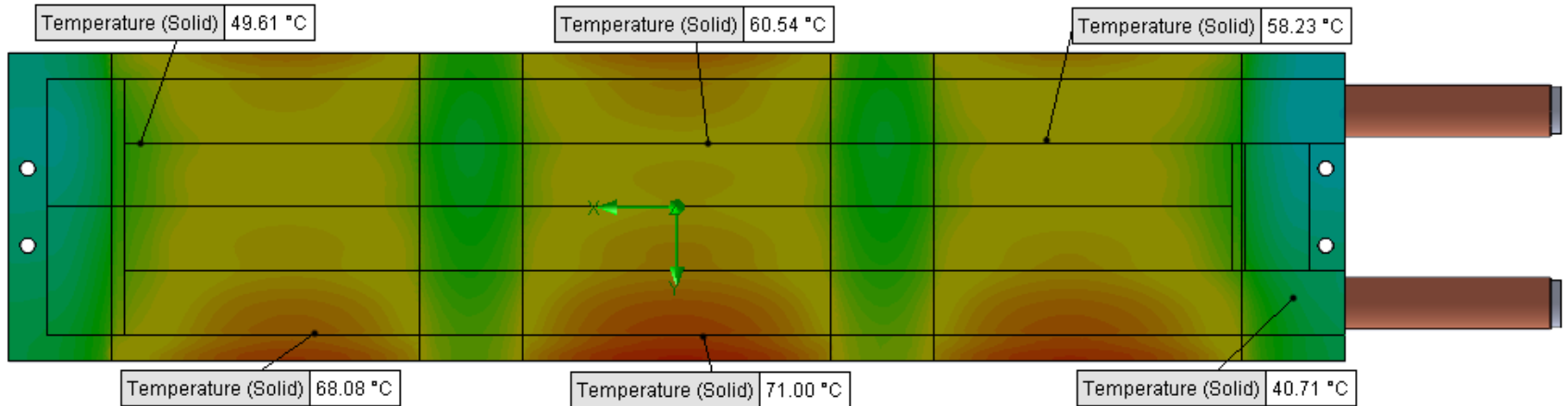
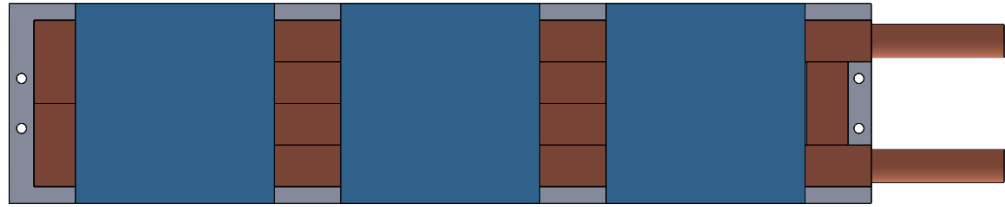
Fluid: Water

Inlet Flow: 1.5 gpm

Inlet Fluid Temp: 20°C

Heat Source: 3 blue squares=6000W

Tube: ½ OD round copper inlet/outlet



## Simulation Data

Goal Name	Unit	Value
SG Min Temperature (Solid) 1	[°C]	28.16447025
SG Av Temperature (Solid) 1	[°C]	54.96598171
SG Max Temperature (Solid) 1	[°C]	73.29865219
FLUID OUT	[°C]	35.19364726
PRESSURE DROP	[lbf/in <sup>2</sup> ]	2.892163926

SG-Surface goal is a parameter on selected surface(s).  
In this case, it is the entire tube side surface area.

## RESULTS

Thermal Resistance: 0.0058°C/W

Pressure Drop: 2.89psi

Min Surface Temp: 28.16°C

Max Surface Temp: 73.29°C

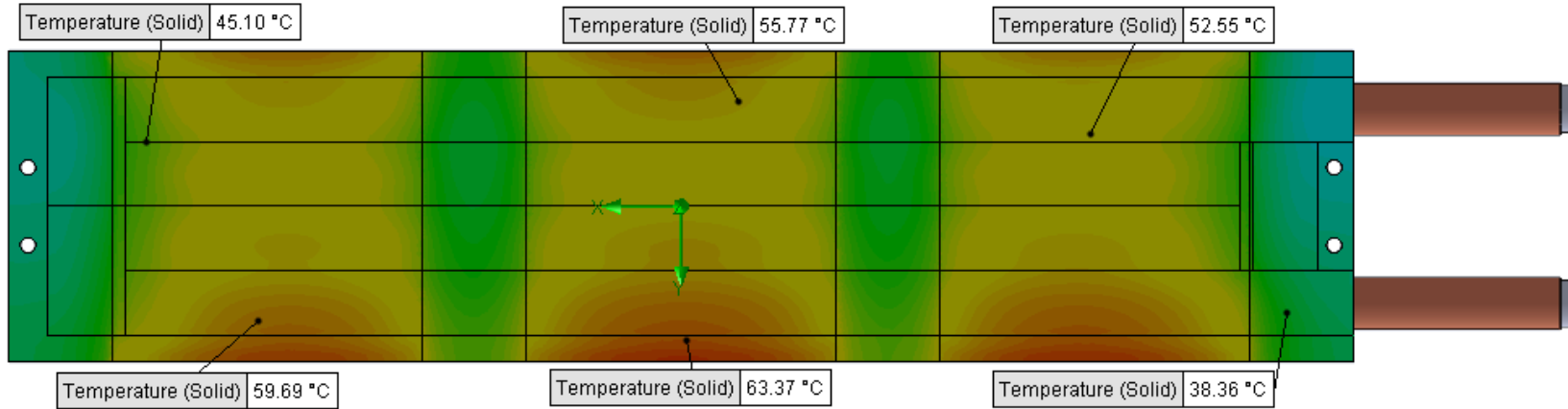
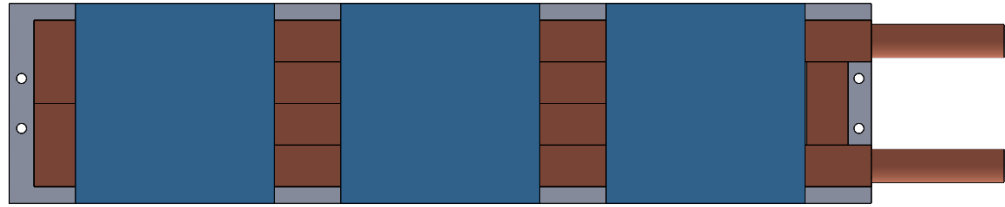
Water Temp Out: 35.19°C

# D6 STANDARD HT-TAP2000-3



## PARAMETERS

Fluid: Water  
 Inlet Flow: 2 gpm  
 Inlet Fluid Temp: 20°C  
 Heat Source: 3 blue squares=6000W  
 Tube: ½ OD round copper inlet/outlet



## Simulation Data

Goal Name	Unit	Value
SG Min Temperature (Solid) 1	[°C]	25.68966254
SG Av Temperature (Solid) 1	[°C]	48.98088728
SG Max Temperature (Solid) 1	[°C]	65.3286312
FLUID OUT	[°C]	31.38811545
PRESSURE DROP	[lbf/in <sup>2</sup> ]	5.120392078

## RESULTS

Thermal Resistance: 0.0048°C/W  
 Pressure Drop: 5.12psi  
 Min Surface Temp: 25.68°C  
 Max Surface Temp: 65.32°C  
 Water Temp Out: 31.38°C

SG-Surface goal is a parameter on selected surface(s).  
 In this case, it is the entire tube side surface area.

# D6 STANDARD HT-TAP2000-3



## PARAMETERS

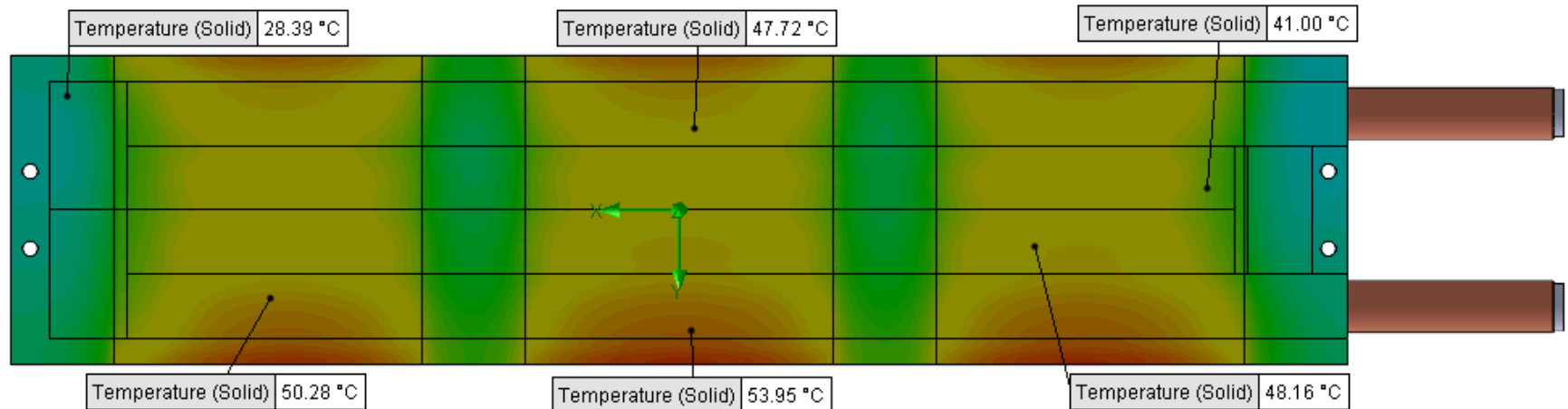
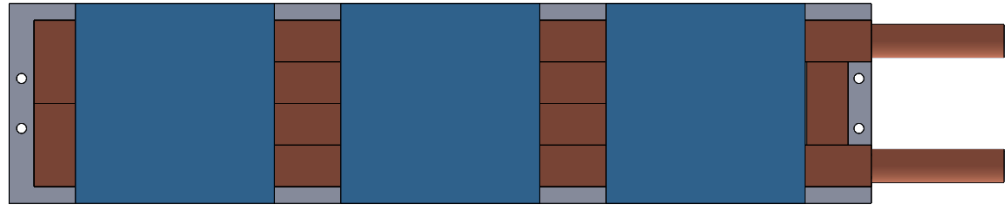
Fluid: Water

Inlet Flow: 3 gpm

Inlet Fluid Temp: 20°C

Heat Source: 3 blue squares=6000W

Tube: ½ OD round copper inlet/outlet



## Simulation Data

Goal Name	Unit	Value
SG Min Temperature (Solid) 1	[°C]	23.28808361
SG Av Temperature (Solid) 1	[°C]	42.64843139
SG Max Temperature (Solid) 1	[°C]	57.1515275
FLUID OUT	[°C]	27.60269375
PRESSURE DROP	[lbf/in <sup>2</sup> ]	11.49399835

SG-Surface goal is a parameter on selected surface(s).  
In this case, it is the entire tube side surface area.

## RESULTS

Thermal Resistance: 0.0037°C/W

Pressure Drop: 11.49psi

Min Surface Temp: 23.28°C

Max Surface Temp: 57.15°C

Water Temp Out: 27.60°C