



D6 INDUSTRIES
STANDARD PRODUCT
HT-TAP1000-3
SIMULATION RESULTS

1-3 gpm flow rates
3X 1000W Total Heat Loads

D6 STANDARD HT-TAP1000-3



PARAMETERS

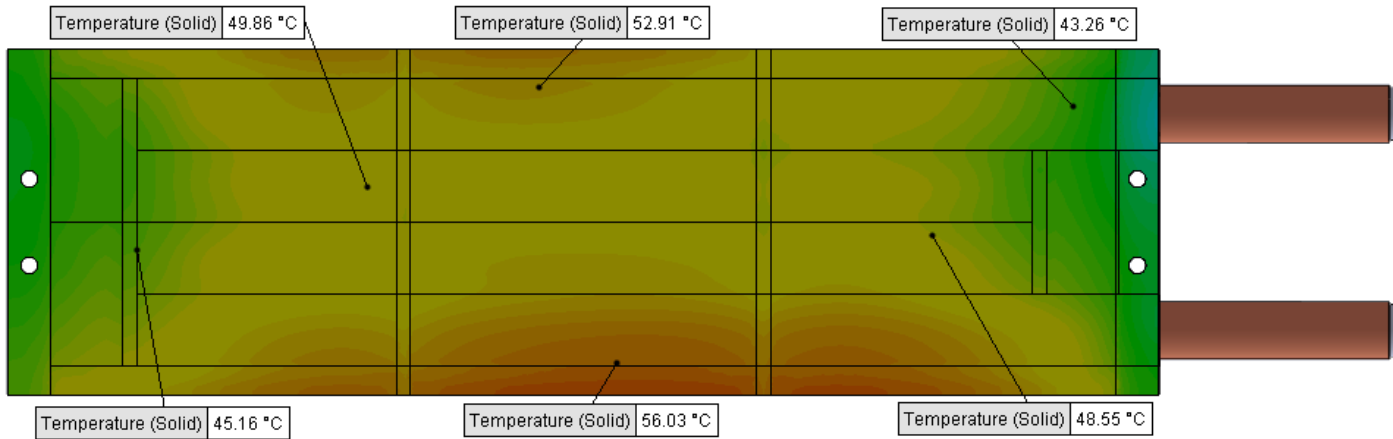
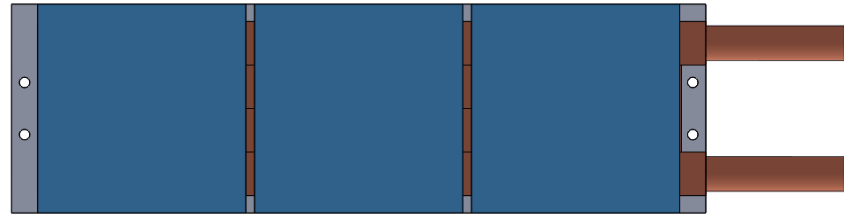
Fluid: Water

Inlet Flow: 1 gpm

Inlet Fluid Temp: 20°C

Heat Source: 3 blue squares=3000W

Tube: ½ OD round copper inlet/outlet



Simulation Data

Goal Name	Unit	Value
SG Min Temperature (Solid) 1	[°C]	33.66080523
SG Av Temperature (Solid) 1	[°C]	49.44533132
SG Max Temperature (Solid) 1	[°C]	57.72460063
FLUID OUT	[°C]	31.36797056
PRESSURE DROP	[lbf/in ²]	1.248396078

RESULTS

Thermal Resistance: 0.0098°C/W

Pressure Drop: 1.24psi

Min Surface Temp: 33.66°C

Max Surface Temp: 57.72°C

Water Temp Out: 31.36°C

SG-Surface goal is a parameter on selected surface(s).
In this case, it is the entire tube side surface area.

D6 STANDARD HT-TAP1000-3



PARAMETERS

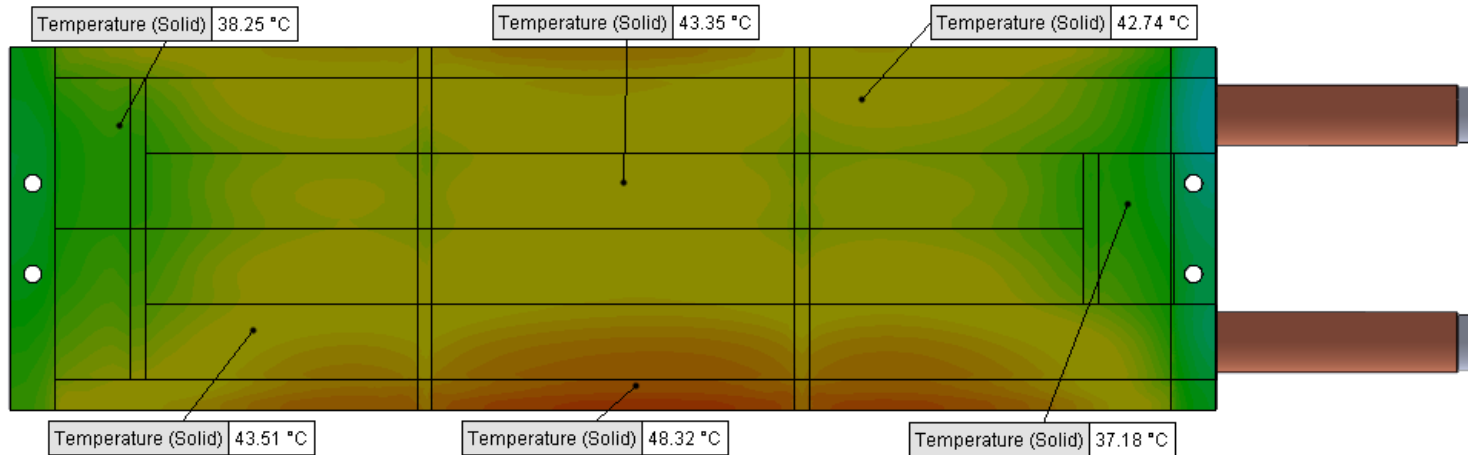
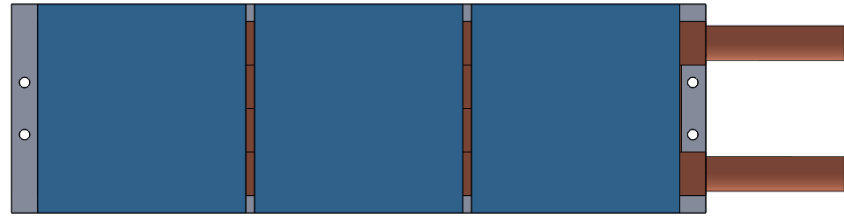
Fluid: Water

Inlet Flow: 1.5 gpm

Inlet Fluid Temp: 20°C

Heat Source: 3 blue squares=3000W

Tube: ½ OD round copper inlet/outlet



Simulation Data

Goal Name	Unit	Value
SG Min Temperature (Solid) 1	[°C]	29.51240089
SG Av Temperature (Solid) 1	[°C]	42.19721386
SG Max Temperature (Solid) 1	[°C]	49.57766837
FLUID OUT	[°C]	27.5870149
PRESSURE DROP	[lbf/in ²]	2.782622725

RESULTS

Thermal Resistance: 0.0073°C/W

Pressure Drop: 2.78psi

Min Surface Temp: 29.51°C

Max Surface Temp: 49.57°C

Water Temp Out: 27.58°C

SG-Surface goal is a parameter on selected surface(s).
In this case, it is the entire tube side surface area.

D6 STANDARD HT-TAP1000-3



PARAMETERS

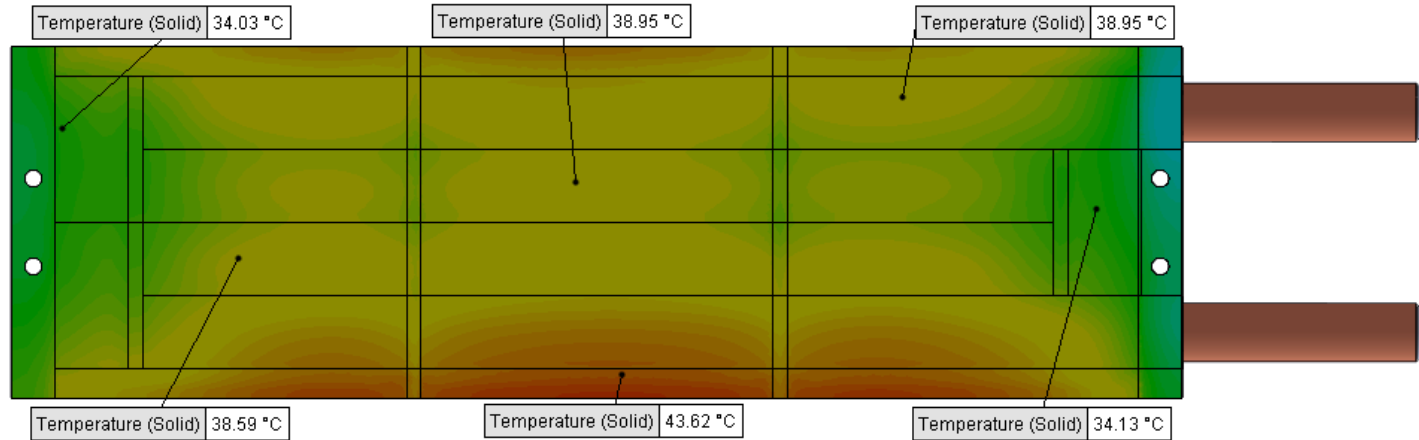
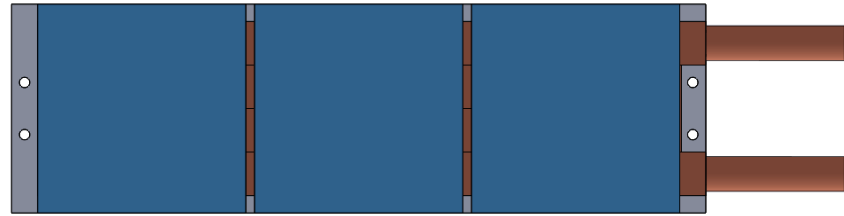
Fluid: Water

Inlet Flow: 2 gpm

Inlet Fluid Temp: 20°C

Heat Source: 3 blue squares=3000W

Tube: ½ OD round copper inlet/outlet



Simulation Data

Goal Name	Unit	Value
SG Min Temperature (Solid) 1	[°C]	26.85253316
SG Av Temperature (Solid) 1	[°C]	38.37058645
SG Max Temperature (Solid) 1	[°C]	44.90089702
FLUID OUT	[°C]	25.69578166
PRESSURE DROP	[lbf/in^2]	4.924956545

SG-Surface goal is a parameter on selected surface(s).
In this case, it is the entire tube side surface area.

RESULTS

Thermal Resistance: 0.0061°C/W

Pressure Drop: 4.92psi

Min Surface Temp: 26.85°C

Max Surface Temp: 44.90°C

Water Temp Out: 25.69°C

D6 STANDARD HT-TAP1000-3



PARAMETERS

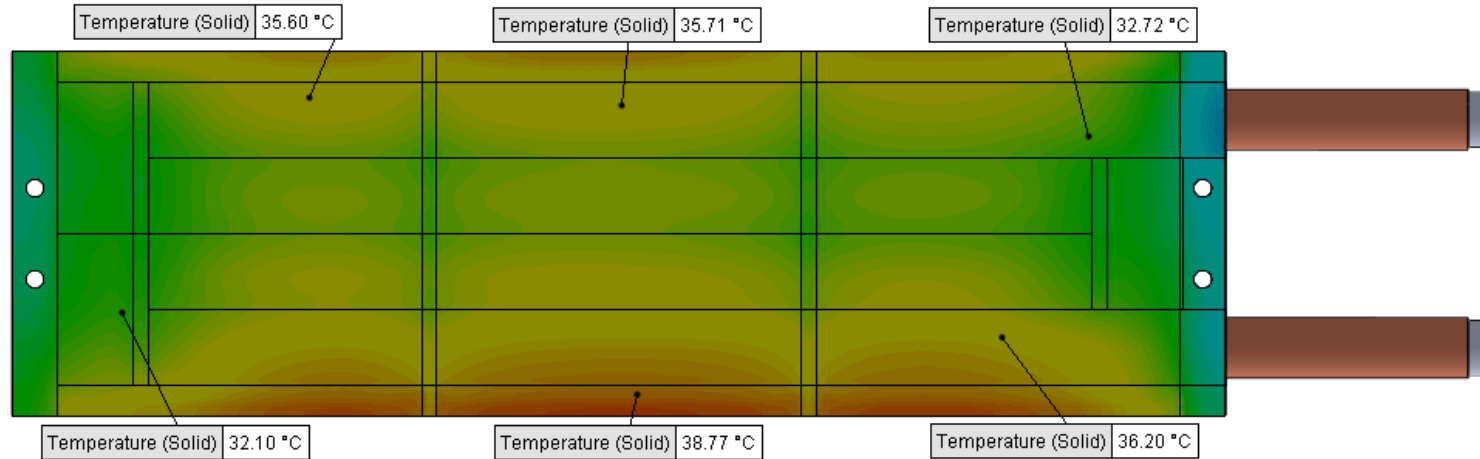
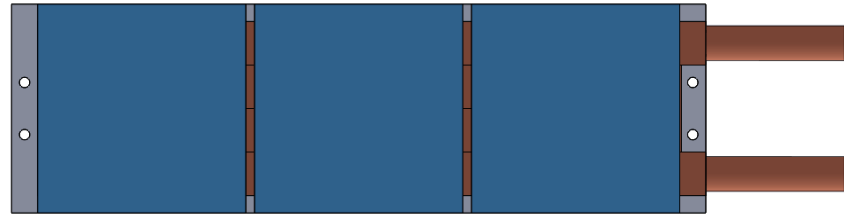
Fluid: Water

Inlet Flow: 3 gpm

Inlet Fluid Temp: 20°C

Heat Source: 3 blue squares=3000W

Tube: ½ OD round copper inlet/outlet



Simulation Data

Goal Name	Unit	Value
SG Min Temperature (Solid) 1	[°C]	24.3836567
SG Av Temperature (Solid) 1	[°C]	34.27027232
SG Max Temperature (Solid) 1	[°C]	39.9503792
FLUID OUT	[°C]	23.81102102
PRESSURE DROP	[lbf/in ²]	11.06419195

RESULTS

Thermal Resistance: 0.0047°C/W

Pressure Drop: 11.06psi

Min Surface Temp: 24.38°C

Max Surface Temp: 39.95°C

Water Temp Out: 23.81°C

SG-Surface goal is a parameter on selected surface(s).
In this case, it is the entire tube side surface area.