



D6 INDUSTRIES
STANDARD PRODUCT
HT-TAP1000-2
SIMULATION RESULTS

1-3 gpm flow rates
2X 1000W Heat Load

D6 STANDARD HT-TAP1000-2



PARAMETERS

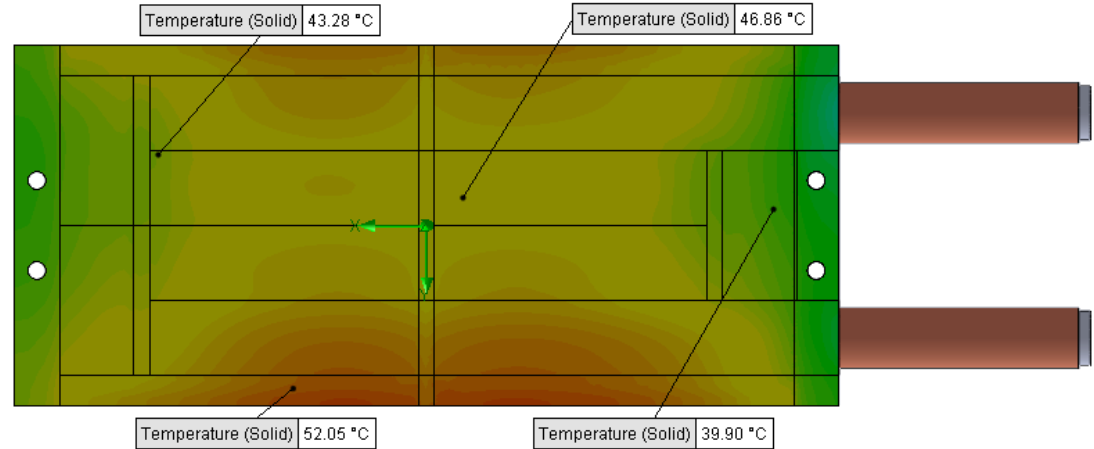
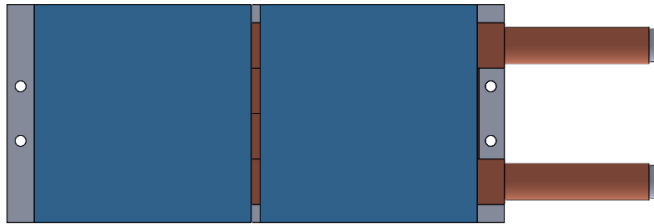
Fluid: Water

Inlet Flow: 1 gpm

Inlet Fluid Temp: 20°C

Heat Source: 2 squares=2000W

Tube: ½ OD round copper inlet/outlet



Simulation Data

Goal Name	Unit	Value
SG Min Temperature (Solid) 1	[°C]	31.96787897
SG Av Temperature (Solid) 1	[°C]	45.82718695
SG Max Temperature (Solid) 1	[°C]	53.14901051
FLUID OUT	[°C]	27.59614926
PRESSURE DROP	[lbf/in ²]	1.189364219

SG-Surface goal is a parameter on selected surface(s).
In this case, it is the entire tube side surface area.

RESULTS

Thermal Resistance: 0.0129°C/W

Pressure Drop: 1.18psi

Min Surface Temp: 31.96°C

Max Surface Temp: 53.14°C

Water Temp Out: 27.59°C

D6 STANDARD HT-TAP1000-2



PARAMETERS

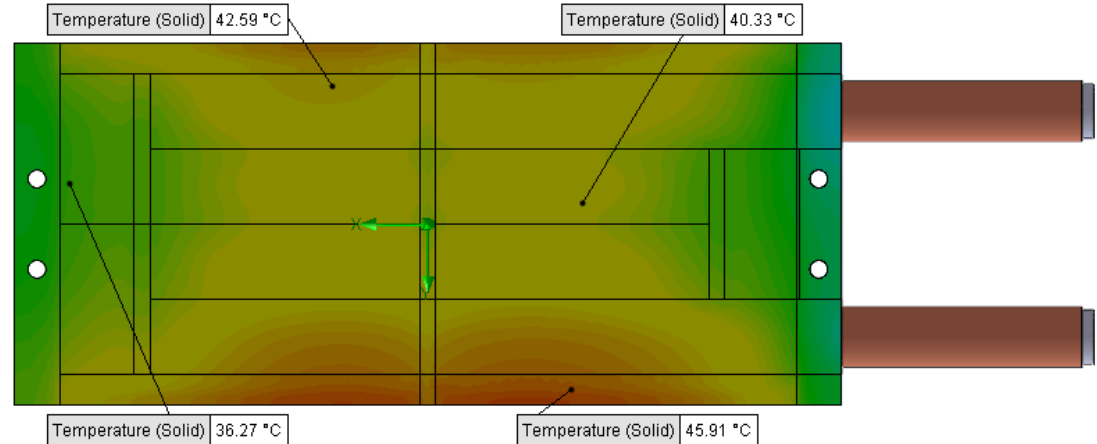
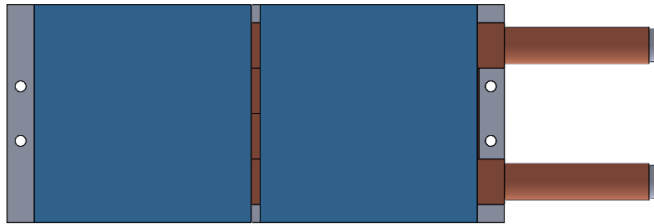
Fluid: Water

Inlet Flow: 1.5 gpm

Inlet Fluid Temp: 20°C

Heat Source: 2 squares=2000W

Tube: 1/2 OD round copper inlet/outlet



Simulation Data

Goal Name	Unit	Value
SG Min Temperature (Solid) 1	[°C]	27.93053818
SG Av Temperature (Solid) 1	[°C]	39.94558968
SG Max Temperature (Solid) 1	[°C]	46.63882847
FLUID OUT	[°C]	25.07115832
PRESSURE DROP	[lbf/in ²]	2.660518288

SG-Surface goal is a parameter on selected surface(s).
In this case, it is the entire tube side surface area.

RESULTS

Thermal Resistance: 0.0099°C/W

Pressure Drop: 2.66psi

Min Surface Temp: 27.93°C

Max Surface Temp: 46.63°C

Water Temp Out: 25.07°C

D6 STANDARD HT-TAP1000-2



PARAMETERS

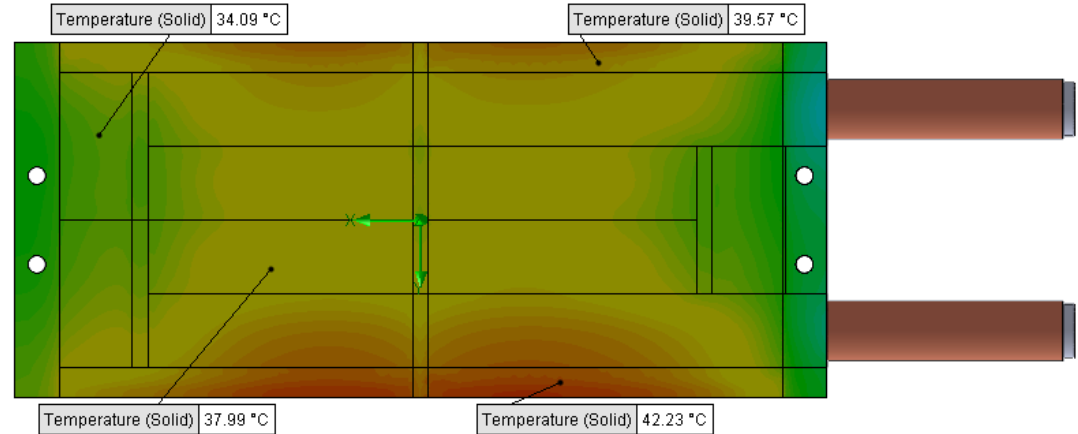
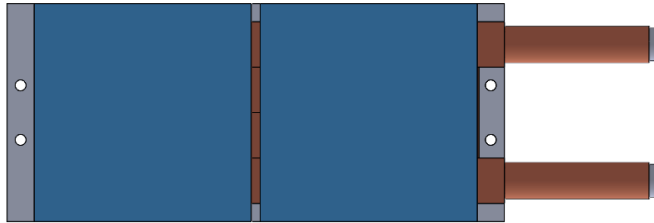
Fluid: Water

Inlet Flow: 2 gpm

Inlet Fluid Temp: 20°C

Heat Source: 2 squares=2000W

Tube: ½ OD round copper inlet/outlet



Simulation Data

Goal Name	Unit	Value
SG Min Temperature (Solid) 1	[°C]	25.65305975
SG Av Temperature (Solid) 1	[°C]	36.68656898
SG Max Temperature (Solid) 1	[°C]	42.90651101
FLUID OUT	[°C]	23.80575308
PRESSURE DROP	[lbf/in^2]	4.734578645

SG-Surface goal is a parameter on selected surface(s).
In this case, it is the entire tube side surface area.

RESULTS

Thermal Resistance: 0.0083°C/W

Pressure Drop: 4.73psi

Min Surface Temp: 25.65°C

Max Surface Temp: 42.90°C

Water Temp Out: 23.80°C

D6 STANDARD HT-TAP1000-2



PARAMETERS

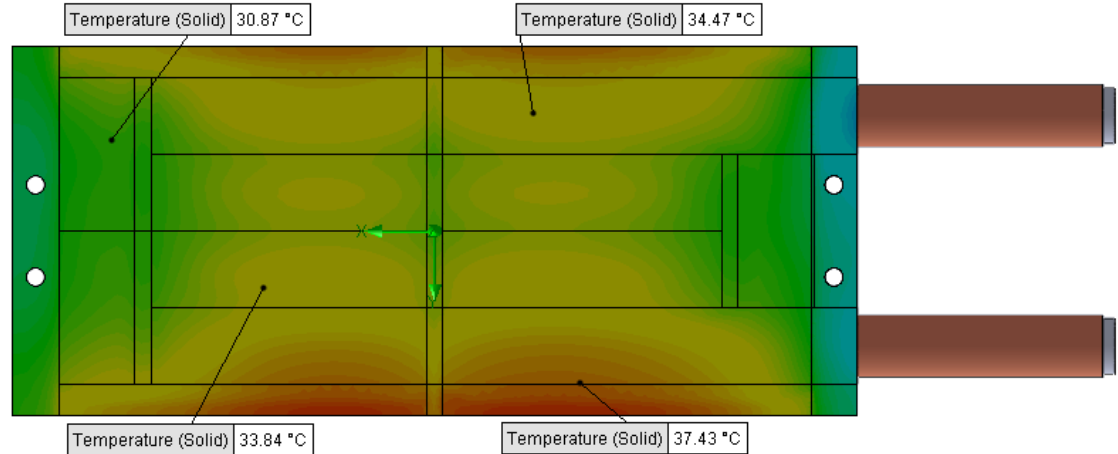
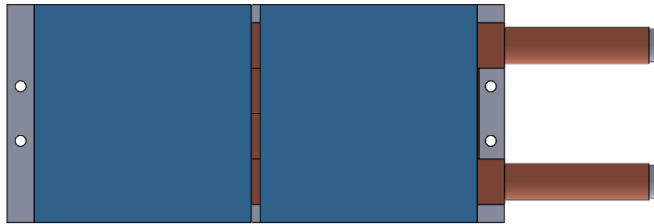
Fluid: Water

Inlet Flow: 3 gpm

Inlet Fluid Temp: 20°C

Heat Source: 2 squares=2000W

Tube: 1/2 OD round copper inlet/outlet



Simulation Data

Goal Name	Unit	Value
SG Min Temperature (Solid) 1	[°C]	23.54841067
SG Av Temperature (Solid) 1	[°C]	33.05432158
SG Max Temperature (Solid) 1	[°C]	38.69640756
FLUID OUT	[°C]	22.54731759
PRESSURE DROP	[lbf/in^2]	10.65777718

SG-Surface goal is a parameter on selected surface(s).
In this case, it is the entire tube side surface area.

RESULTS

Thermal Resistance: 0.0065°C/W

Pressure Drop: 10.65psi

Min Surface Temp: 23.54°C

Max Surface Temp: 38.69°C

Water Temp Out: 22.54°C