



D6 INDUSTRIES
STANDARD PRODUCT
HT-6P-2000
SIMULATION RESULTS

1-3 gpm flow rates
Distributed 1000W Heat Load

D6 STANDARD- HT-6P-2000



PARAMETERS

Fluid: Water

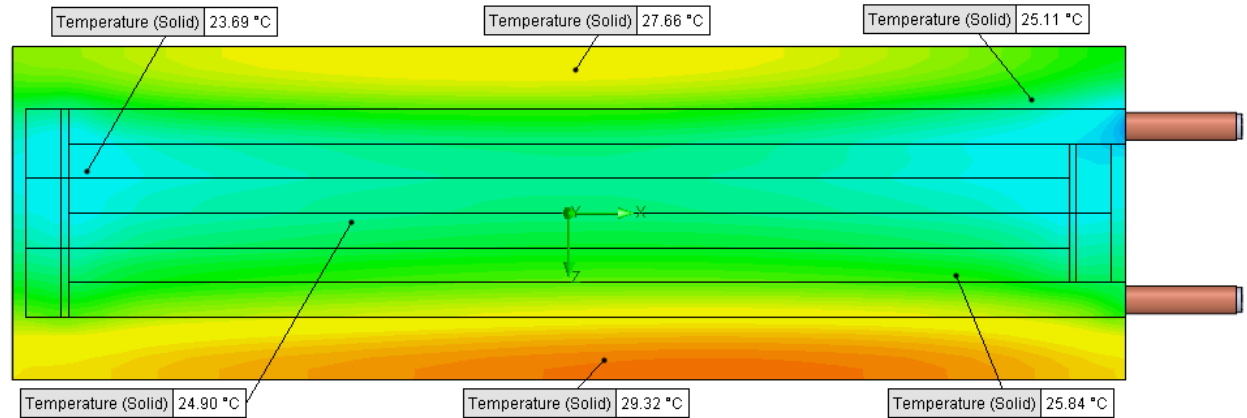
Inlet Flow: 1 gpm

Inlet Fluid Temp: 20°C

Heat Source: 1000W distributed

Surface Area: 6.0" x 20.0"

Tube: 5/8 Square copper with
1/2 OD round copper inlet/outlet



Simulation Data

Goal Name	Unit	Value
SG Min Temperature (Solid) 1	[°C]	22.4486181
SG Av Temperature (Solid) 1	[°C]	26.08881416
SG Max Temperature (Solid) 1	[°C]	29.54341449
SG FLUID OUT	[°C]	23.78015435
PRESSURE DROP	[lbf/in^2]	2.361642683

SG-Surface goal is a parameter on selected surface(s).
In this case, it is the entire tube side surface area.

RESULTS

Thermal Resistance: 0.0060°C/W

Pressure Drop: 2.36psi

Min Surface Temp: 22.44°C

Max Surface Temp: 29.54°C

Water Temp Out: 23.78°C

D6 STANDARD- HT-6P-2000



PARAMETERS

Fluid: Water

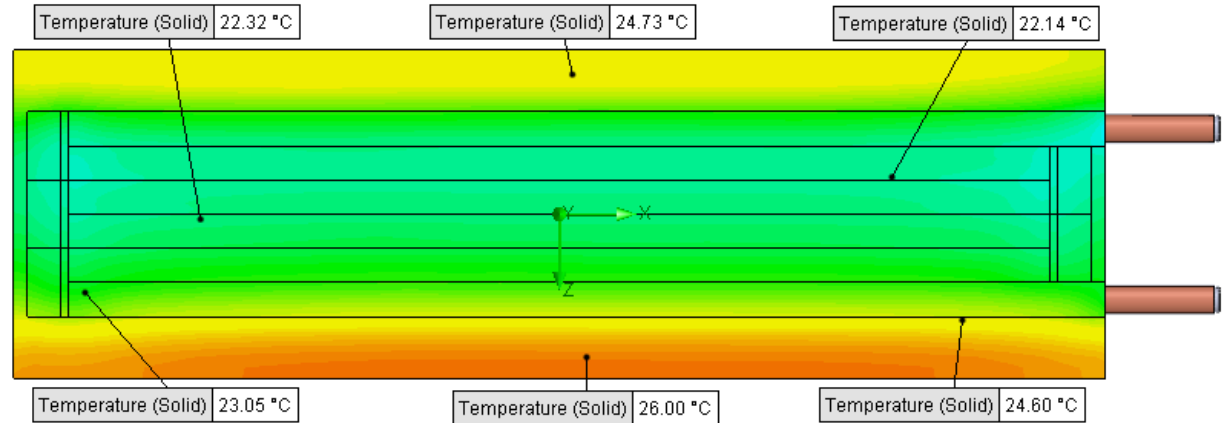
Inlet Flow: 2 gpm

Inlet Fluid Temp: 20°C

Heat Source: 1000W distributed

Surface Area: 6.0" x 20.0"

Tube: 5/8 Square copper with
1/2 OD round copper inlet/outlet



Simulation Data

Goal Name	Unit	Value
SG Min Temperature (Solid) 1	[°C]	21.45131385
SG Av Temperature (Solid) 1	[°C]	23.5277696
SG Max Temperature (Solid) 1	[°C]	26.20079818
SG FLUID OUT	[°C]	21.90220285
PRESSURE DROP	[lbf/in ²]	9.165398895

SG-Surface goal is a parameter on selected surface(s).
In this case, it is the entire tube side surface area.

RESULTS

Thermal Resistance: 0.0035°C/W

Pressure Drop: 9.16psi

Min Surface Temp: 21.45°C

Max Surface Temp: 26.20°C

Water Temp Out: 21.90°C

D6 STANDARD- HT-6P-2000



PARAMETERS

Fluid: Water

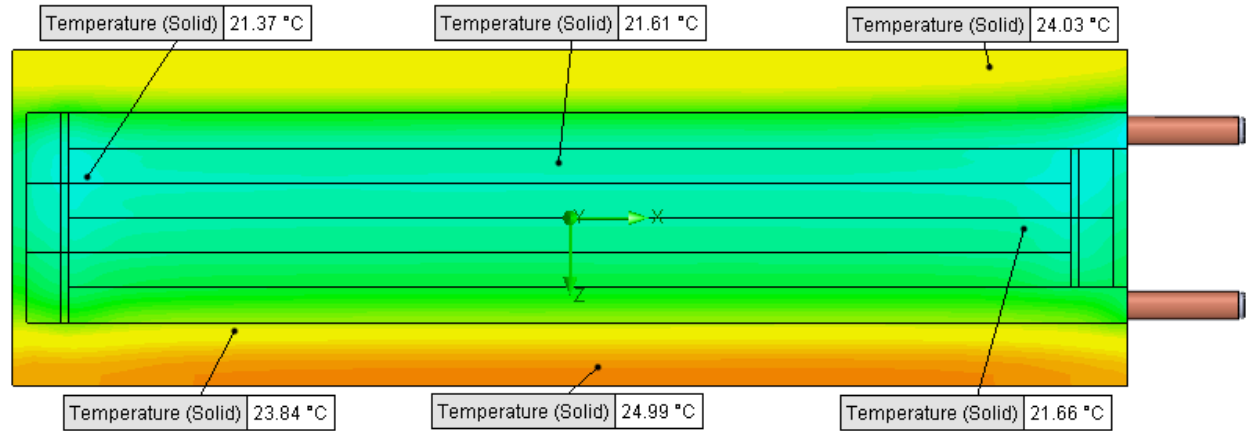
Inlet Flow: 3 gpm

Inlet Fluid Temp: 20°C

Heat Source: 1000W distributed

Surface Area: 6.0" x 20.0"

Tube: 5/8 Square copper with
1/2 OD round copper inlet/outlet



Simulation Data

Goal Name	Unit	Value
SG Min Temperature (Solid) 1	[°C]	21.08389371
SG Av Temperature (Solid) 1	[°C]	22.76399245
SG Max Temperature (Solid) 1	[°C]	25.16211348
SG FLUID OUT	[°C]	21.29122797
PRESSURE DROP	[lbf/in^2]	20.52754933

SG-Surface goal is a parameter on selected surface(s).
In this case, it is the entire tube side surface area.

RESULTS

Thermal Resistance: 0.0027°C/W

Pressure Drop: 20.52psi

Min Surface Temp: 21.08°C

Max Surface Temp: 25.16°C

Water Temp Out: 21.29°C