



D6 INDUSTRIES
STANDARD PRODUCT
HT-6P-1200
SIMULATION RESULTS

1-3 gpm flow rates
Distributed 1000W Heat Load

D6 STANDARD- HT-6P-1200



PARAMETERS

Fluid: Water

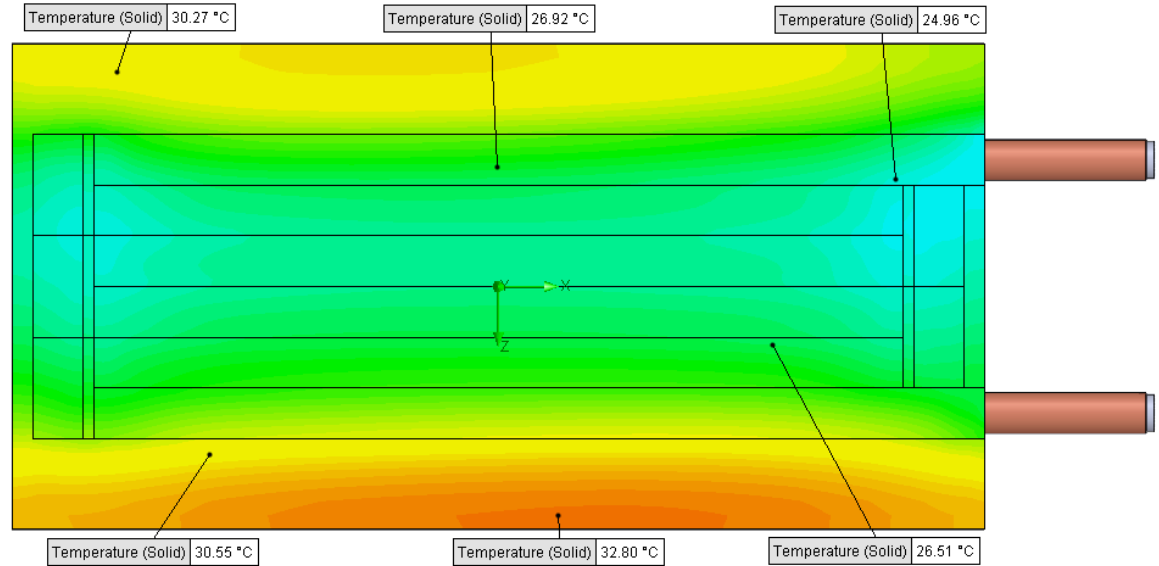
Inlet Flow: 1 gpm

Inlet Fluid Temp: 20°C

Heat Source: 1000W distributed

Surface Area: 6.0" x 12.0"

Tube: 5/8 Square copper with
1/2 OD round copper inlet/outlet



Simulation Data

Goal Name	Unit	Value
SG Min Temperature (Solid) 1	[°C]	23.60376463
SG Av Temperature (Solid) 1	[°C]	28.09768943
SG Max Temperature (Solid) 1	[°C]	32.95559934
SG FLUID OUT	[°C]	23.78934149
PRESSURE DROP	[lbf/in^2]	2.155279707

SG-Surface goal is a parameter on selected surface(s).
In this case, it is the entire tube side surface area.

RESULTS

Thermal Resistance: 0.0080 °C/W

Pressure Drop: 2.15psi

Min Surface Temp: 23.60°C

Max Surface Temp: 32.95°C

Water Temp Out: 23.78°C

D6 STANDARD- HT-6P-1200



PARAMETERS

Fluid: Water

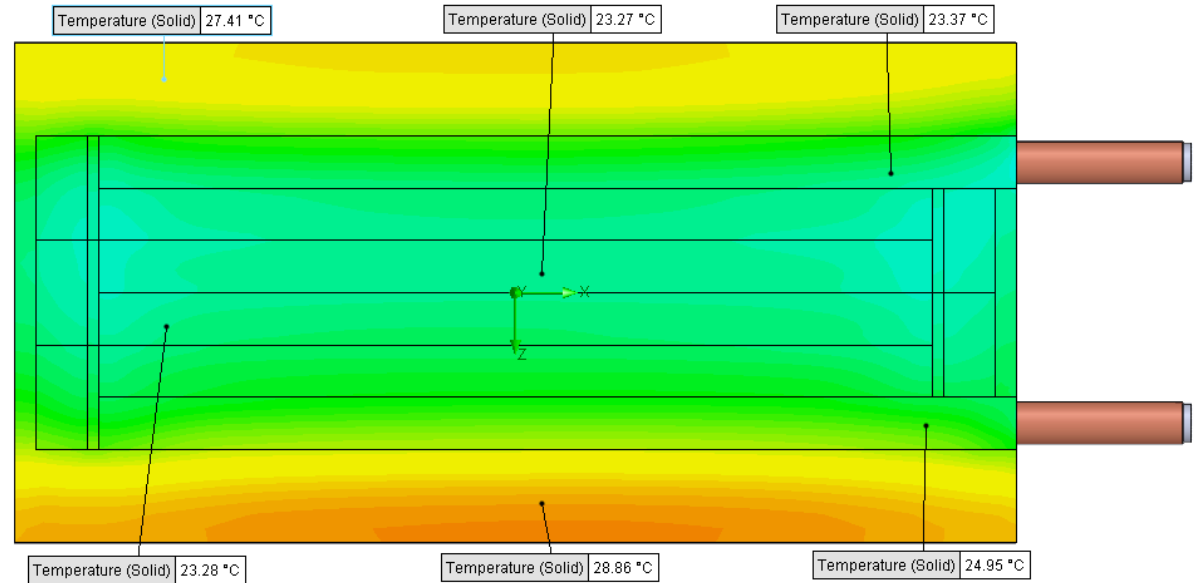
Inlet Flow: 2 gpm

Inlet Fluid Temp: 20°C

Heat Source: 1000W distributed

Surface Area: 6.0" x 12.0"

Tube: 5/8 Square copper with
1/2 OD round copper inlet/outlet



Simulation Data

Goal Name	Unit	Value
SG Min Temperature (Solid) 1	[°C]	22.2350218
SG Av Temperature (Solid) 1	[°C]	25.18195521
SG Max Temperature (Solid) 1	[°C]	29.3609286
SG FLUID OUT	[°C]	21.90263304
PRESSURE DROP	[lbf/in^2]	8.501775129

SG-Surface goal is a parameter on selected surface(s).
In this case, it is the entire tube side surface area.

RESULTS

Thermal Resistance: 0.0051°C/W

Pressure Drop: 8.50psi

Min Surface Temp: 22.23°C

Max Surface Temp: 29.36°C

Water Temp Out: 21.90°C

D6 STANDARD- HT-6P-1200



PARAMETERS

Fluid: Water

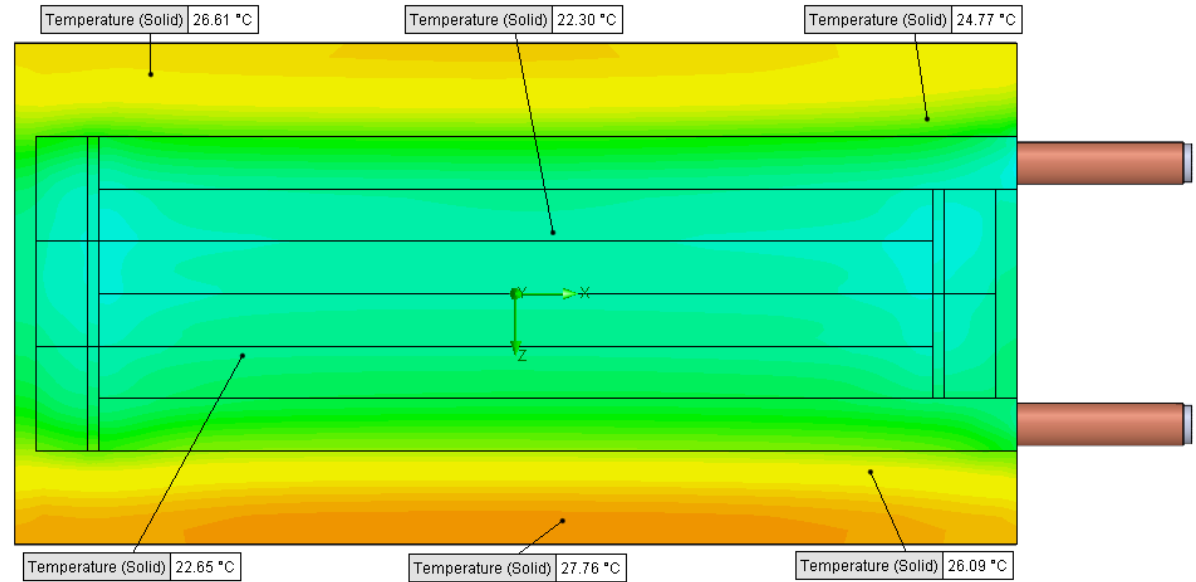
Inlet Flow: 3 gpm

Inlet Fluid Temp: 20°C

Heat Source: 1000W distributed

Surface Area: 6.0" x 12.0"

Tube: 5/8 Square copper with
1/2 OD round copper inlet/outlet



Simulation Data

Goal Name	Unit	Value
SG Min Temperature (Solid) 1	[°C]	21.65854456
SG Av Temperature (Solid) 1	[°C]	24.15696739
SG Max Temperature (Solid) 1	[°C]	27.98772106
SG FLUID OUT	[°C]	21.28771509
PRESSURE DROP	[lbf/in^2]	19.06036728

SG-Surface goal is a parameter on selected surface(s).
In this case, it is the entire tube side surface area.

RESULTS

Thermal Resistance: 0.0041°C/W

Pressure Drop: 19.06psi

Min Surface Temp: 21.65°C

Max Surface Temp: 27.98°C

Water Temp Out: 21.28°C