



D6 INDUSTRIES
STANDARD PRODUCT
HT-6P-0600
SIMULATION RESULTS

1-3 gpm flow rates
Distributed 1000W Heat Load

D6 STANDARD- HT-6P-0600



PARAMETERS

Fluid: Water

Inlet Flow: 1 gpm

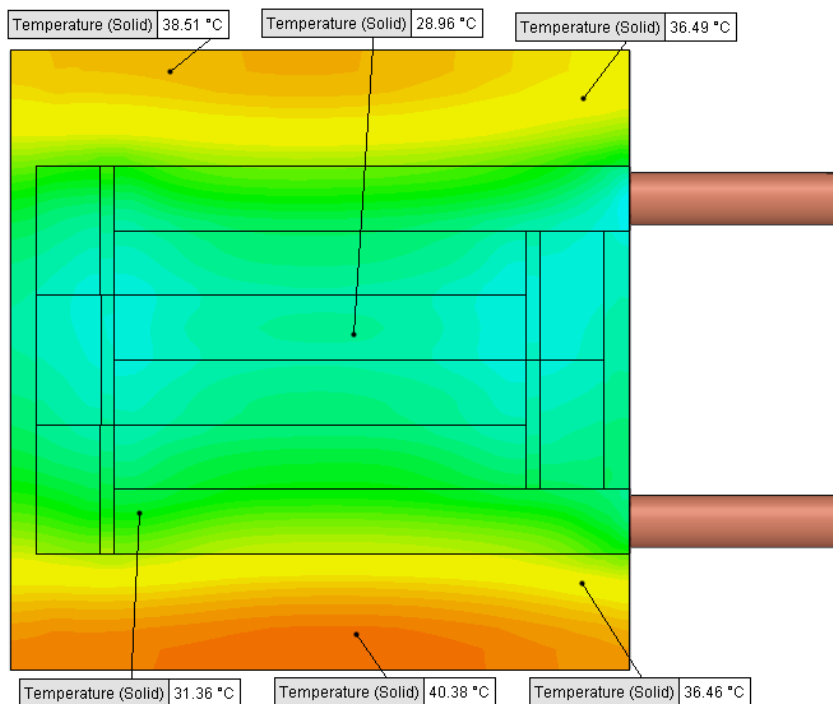
Inlet Fluid Temp: 20°C

Heat Source: 1000W distributed

Surface Area: 6.0" x 6.0"

Tube: 5/8 Square copper with

1/2 OD round copper inlet/outlet



Simulation Data

Goal Name	Unit	Value
SG Min Temperature (Solid) 1	[°C]	27.38433533
SG Av Temperature (Solid) 1	[°C]	32.90019741
SG Max Temperature (Solid) 1	[°C]	41.13227259
SG FLUID OUT	[°C]	23.79881429
PRESSURE DROP	[lbf/in ²]	1.924409896

SG-Surface goal is a parameter on selected surface(s).
In this case, it is the entire tube side surface area.

RESULTS

Thermal Resistance: 0.0129 °C/W

Pressure Drop: 1.92psi

Min Surface Temp: 27.38°C

Max Surface Temp: 41.13°C

Water Temp Out: 23.79°C

D6 STANDARD- HT-6P-0600



PARAMETERS

Fluid: Water

Inlet Flow: 2 gpm

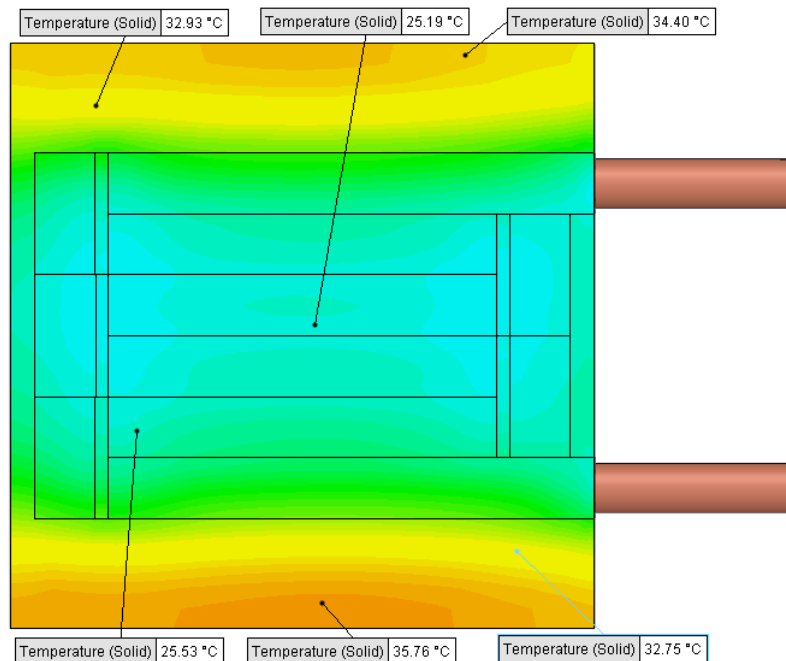
Inlet Fluid Temp: 20°C

Heat Source: 1000W distributed

Surface Area: 6.0" x 6.0"

Tube: 5/8 Square copper with

1/2 OD round copper inlet/outlet



Simulation Data

Goal Name	Unit	Value
SG Min Temperature (Solid) 1	[°C]	24.35905394
SG Av Temperature (Solid) 1	[°C]	28.96265071
SG Max Temperature (Solid) 1	[°C]	36.58091859
SG FLUID OUT	[°C]	21.90756452
PRESSURE DROP	[lbf/in^2]	7.629356788

SG-Surface goal is a parameter on selected surface(s).
In this case, it is the entire tube side surface area.

RESULTS

Thermal Resistance: 0.0089 °C/W

Pressure Drop: 7.62psi

Min Surface Temp: 24.35°C

Max Surface Temp: 36.58°C

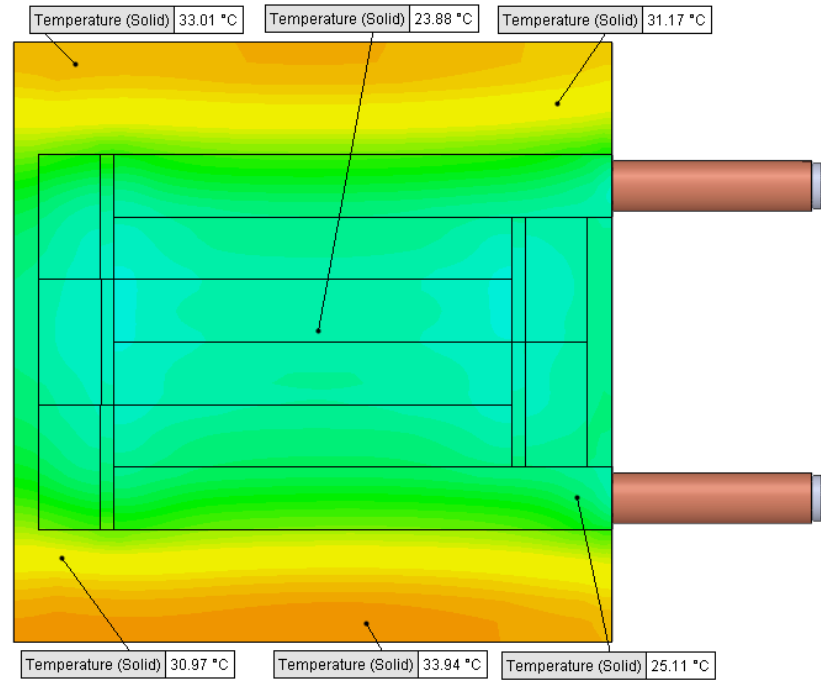
Water Temp Out: 21.90°C

D6 STANDARD- HT-6P-0600



PARAMETERS

Fluid: Water
 Inlet Flow: 3 gpm
 Inlet Fluid Temp: 20°C
 Heat Source: 1000W distributed
 Surface Area: 6.0" x 6.0"
 Tube: 5/8 Square copper with
 1/2 OD round copper inlet/outlet



Simulation Data

Goal Name	Unit	Value
SG Min Temperature (Solid) 1	[°C]	23.16986193
SG Av Temperature (Solid) 1	[°C]	27.40199309
SG Max Temperature (Solid) 1	[°C]	34.64804134
SG FLUID OUT	[°C]	21.29028321
PRESSURE DROP	[lbf/in^2]	17.08927283

SG-Surface goal is a parameter on selected surface(s).
 In this case, it is the entire tube side surface area.

RESULTS

Thermal Resistance: 0.0074 °C/W
 Pressure Drop: 17.08psi
 Min Surface Temp: 23.16°C
 Max Surface Temp: 34.64°C
 Water Temp Out: 21.29°C