



**D6 INDUSTRIES**  
**STANDARD PRODUCT**  
**HT-4P-2000**  
**SIMULATION RESULTS**

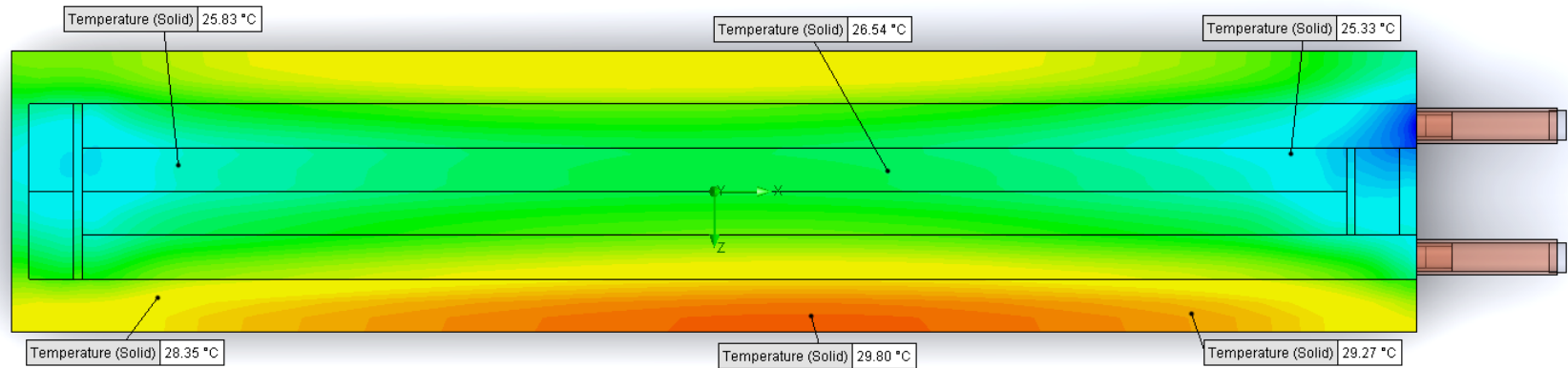
1-3 gpm flow rates  
Distributed 1000W Heat Load

# D6 STANDARD- HT-4P-2000



## PARAMETERS

Fluid: Water  
Inlet Flow: 1 gpm  
Inlet Fluid Temp: 20°C  
Heat Source: 1000W distributed  
Surface Area: 4.0" x 20.0"  
Tube: 5/8 Square copper with  
1/2 OD round copper inlet/outlet



## Simulation Data

Goal Name	Unit	Value
SG Min Temperature (Solid) 1	[°C]	23.35065031
SG Av Temperature (Solid) 1	[°C]	27.30120076
SG Max Temperature (Solid) 1	[°C]	29.97035272
SG FLUID OUT	[°C]	23.78795105
PRESSURE DROP	[lbf/in^2]	1.556270965

SG-Surface goal is a parameter on selected surface(s).  
In this case, it is the entire tube side surface area.

## RESULTS

Thermal Resistance: 0.0073°C/W  
Pressure Drop: 1.55psi  
Min Surface Temp: 23.35°C  
Max Surface Temp: 29.97°C  
Water Temp Out: 23.78°C

# D6 STANDARD- HT-4P-2000



## PARAMETERS

Fluid: Water

Inlet Flow: 2 gpm

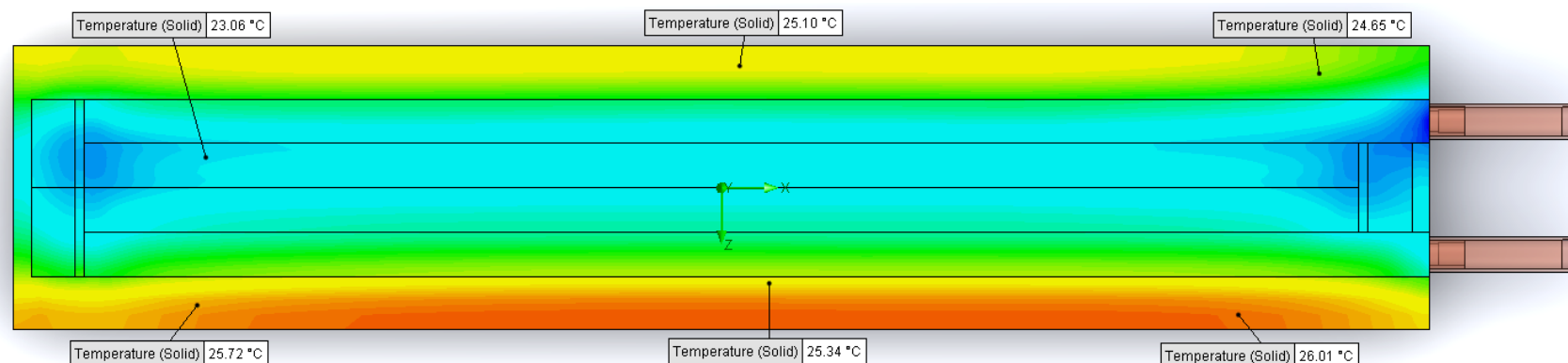
Inlet Fluid Temp: 20°C

Heat Source: 1000W distributed

Surface Area: 4.0" x 20.0"

Tube: 5/8 Square copper with

1/2 OD round copper inlet/outlet



## Simulation Data

Goal Name	Unit	Value
SG Min Temperature (Solid) 1	[°C]	21.98450749
SG Av Temperature (Solid) 1	[°C]	24.20100398
SG Max Temperature (Solid) 1	[°C]	26.26562518
SG FLUID OUT	[°C]	21.90282054
PRESSURE DROP	[lbf/in <sup>2</sup> ]	6.000937326

SG-Surface goal is a parameter on selected surface(s).  
In this case, it is the entire tube side surface area.

## RESULTS

Thermal Resistance: 0.0042°C/W

Pressure Drop: 6.00psi

Min Surface Temp: 21.98°C

Max Surface Temp: 26.26°C

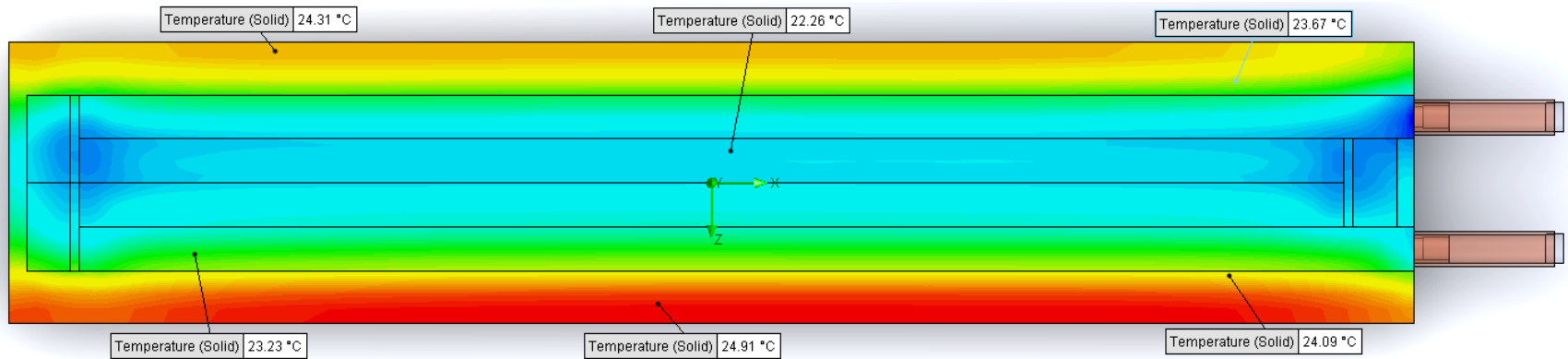
Water Temp Out: 21.90°C

# D6 STANDARD- HT-4P-2000



## PARAMETERS

Fluid: Water  
Inlet Flow: 3 gpm  
Inlet Fluid Temp: 20°C  
Heat Source: 1000W distributed  
Surface Area: 4.0" x 20.0"  
Tube: 5/8 Square copper with  
½ OD round copper inlet/outlet



## Simulation Data

Goal Name	Unit	Value
SG Min Temperature (Solid) 1	[°C]	21.4442619
SG Av Temperature (Solid) 1	[°C]	23.25051212
SG Max Temperature (Solid) 1	[°C]	25.12938629
SG FLUID OUT	[°C]	21.28374078
PRESSURE DROP	[lbf/in^2]	13.39271591

SG-Surface goal is a parameter on selected surface(s).  
In this case, it is the entire tube side surface area.

## RESULTS

Thermal Resistance: 0.0032°C/W  
Pressure Drop: 13.39psi  
Min Surface Temp: 21.44°C  
Max Surface Temp: 25.12°C  
Water Temp Out: 21.28°C