



**D6 INDUSTRIES
STANDARD PRODUCT
HT-4P-1600**

SIMULATION RESULTS

1-3 gpm flow rates
Distributed 1000W Heat Load

D6 STANDARD- HT-4P-1600



PARAMETERS

Fluid: Water

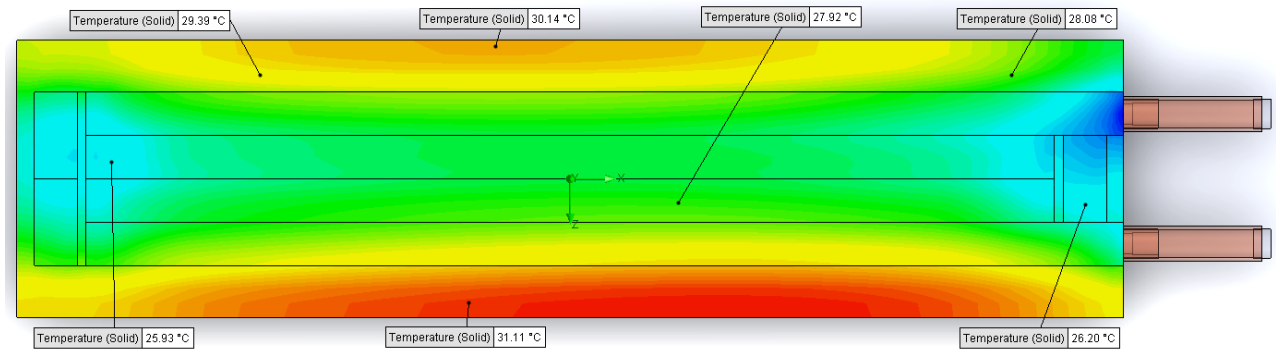
Inlet Flow: 1 gpm

Inlet Fluid Temp: 20°C

Heat Source: 1000W distributed

Surface Area: 4.0" x 16.0"

Tube: 5/8 Square copper with
1/2 OD round copper inlet/outlet



Simulation Data

Goal Name	Unit	Value
SG Min Temperature (Solid) 1	[°C]	24.20234007
SG Av Temperature (Solid) 1	[°C]	28.40522925
SG Max Temperature (Solid) 1	[°C]	31.49417532
SG FLUID OUT	[°C]	23.78538648
PRESSURE DROP	[lbf/in^2]	1.528174719

SG-Surface goal is a parameter on selected surface(s).
In this case, it is the entire tube side surface area.

RESULTS

Thermal Resistance: 0.0084°C/W

Pressure Drop: 1.52psi

Min Surface Temp: 24.20°C

Max Surface Temp: 31.49°C

Water Temp Out: 23.78°C

D6 STANDARD- HT-4P-1600



PARAMETERS

Fluid: Water

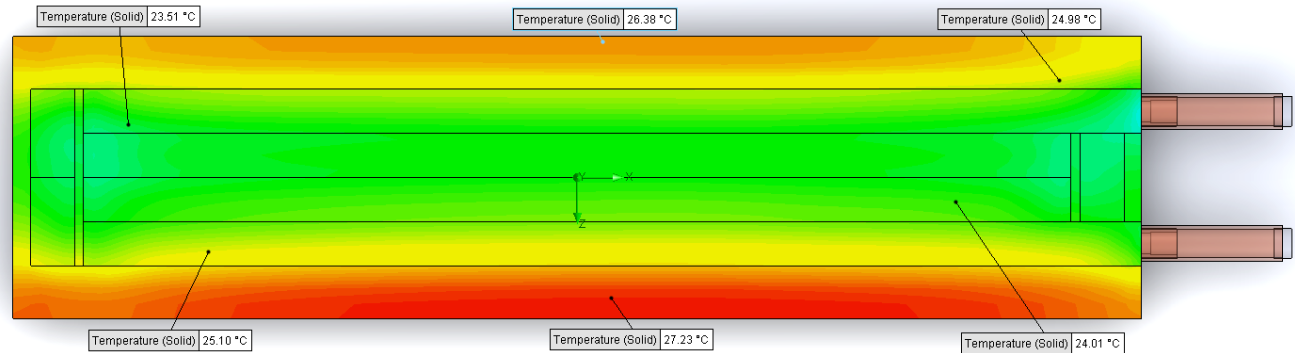
Inlet Flow: 2 gpm

Inlet Fluid Temp: 20°C

Heat Source: 1000W distributed

Surface Area: 4.0" x 16.0"

Tube: 5/8 Square copper with
1/2 OD round copper inlet/outlet



Simulation Data

Goal Name	Unit	Value
SG Min Temperature (Solid) 1	[°C]	22.56982587
SG Av Temperature (Solid) 1	[°C]	24.97329404
SG Max Temperature (Solid) 1	[°C]	27.5185343
SG FLUID OUT	[°C]	21.9026279
PRESSURE DROP	[lbf/in^2]	5.951863353

SG-Surface goal is a parameter on selected surface(s).
In this case, it is the entire tube side surface area.

RESULTS

Thermal Resistance: 0.0049°C/W

Pressure Drop: 5.95psi

Min Surface Temp: 22.56°C

Max Surface Temp: 27.51°C

Water Temp Out: 21.90°C

D6 STANDARD- HT-4P-1600



PARAMETERS

Fluid: Water

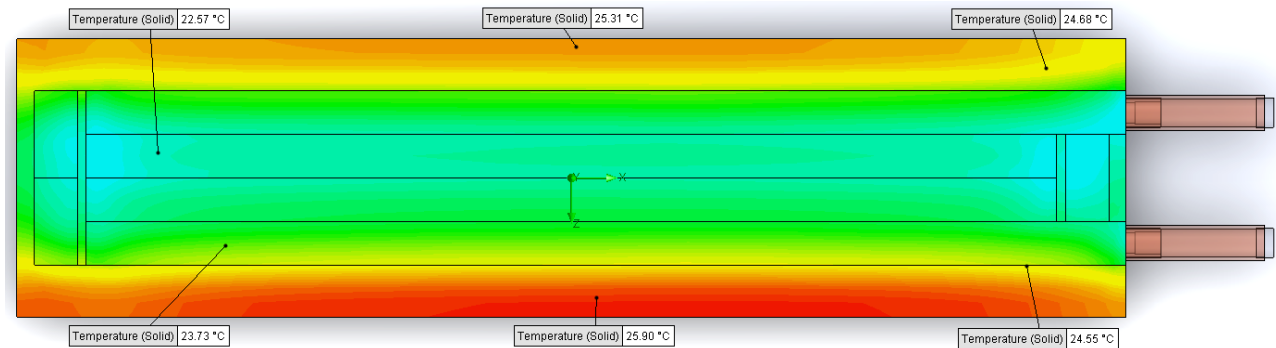
Inlet Flow: 3 gpm

Inlet Fluid Temp: 20°C

Heat Source: 1000W distributed

Surface Area: 4.0" x 16.0"

Tube: 5/8 Square copper with
1/2 OD round copper inlet/outlet



Simulation Data

Goal Name	Unit	Value
SG Min Temperature (Solid) 1	[°C]	21.98750786
SG Av Temperature (Solid) 1	[°C]	23.88227472
SG Max Temperature (Solid) 1	[°C]	26.18926487
SG FLUID OUT	[°C]	21.28167687
PRESSURE DROP	[lbf/in^2]	13.31569475

SG-Surface goal is a parameter on selected surface(s).
In this case, it is the entire tube side surface area.

RESULTS

Thermal Resistance: 0.0038°C/W

Pressure Drop: 13.31psi

Min Surface Temp: 21.28°C

Max Surface Temp: 26.18°C

Water Temp Out: 21.28°C