



D6 INDUSTRIES
STANDARD PRODUCT
HT-4P-1200

SIMULATION RESULTS

1-3 gpm flow rates
Distributed 1000W Heat Load

D6 STANDARD- HT-4P-1200



PARAMETERS

Fluid: Water

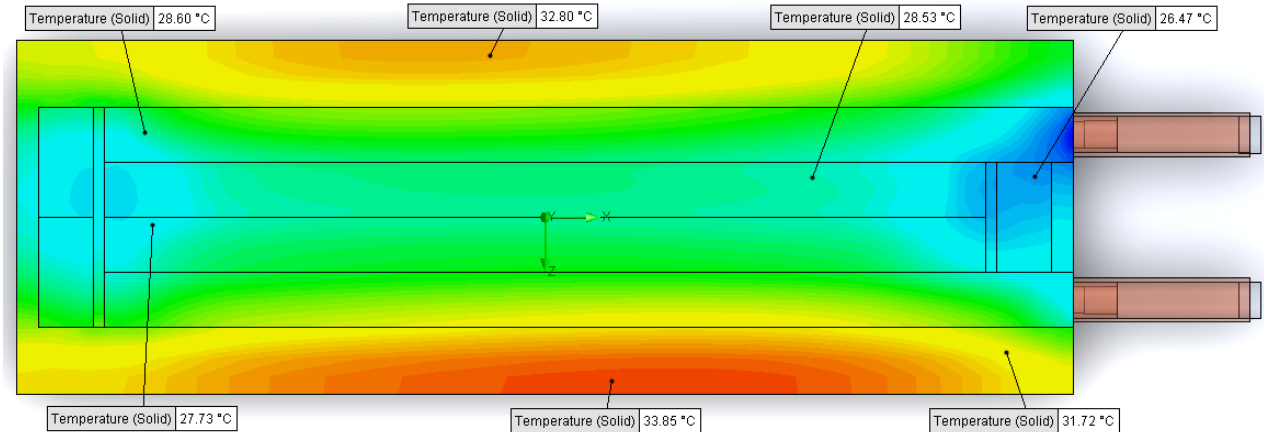
Inlet Flow: 1 gpm

Inlet Fluid Temp: 20°C

Heat Source: 1000W distributed

Surface Area: 4.0" x 12.0"

Tube: 5/8 Square copper with
1/2 OD round copper inlet/outlet



Simulation Data

Goal Name	Unit	Value
SG Min Temperature (Solid) 1	[°C]	25.35029522
SG Av Temperature (Solid) 1	[°C]	29.89215297
SG Max Temperature (Solid) 1	[°C]	33.63096675
SG FLUID OUT	[°C]	23.79234715
PRESSURE DROP	[lbf/in^2]	1.75946647

SG-Surface goal is a parameter on selected surface(s).
In this case, it is the entire tube side surface area.

RESULTS

Thermal Resistance: 0.0098°C/W

Pressure Drop: 1.75psi

Min Surface Temp: 25.35°C

Max Surface Temp: 33.63°C

Water Temp Out: 23.79°C

D6 STANDARD- HT-4P-1200



PARAMETERS

Fluid: Water

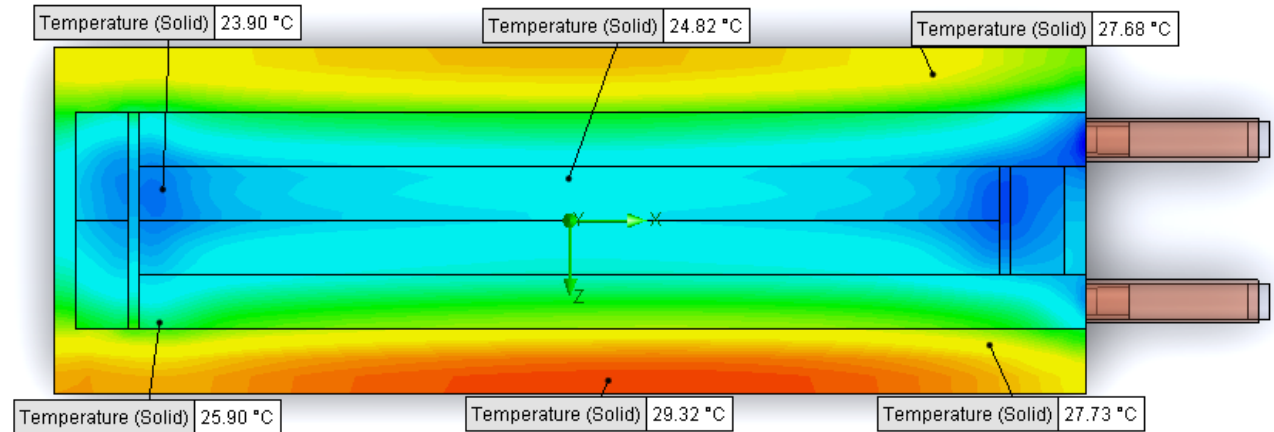
Inlet Flow: 2 gpm

Inlet Fluid Temp: 20°C

Heat Source: 1000W distributed

Surface Area: 4.0" x 12.0"

Tube: 5/8 Square copper with
1/2 OD round copper inlet/outlet



Simulation Data

Goal Name	Unit	Value
SG Min Temperature (Solid) 1	[°C]	23.1996779
SG Av Temperature (Solid) 1	[°C]	26.24181179
SG Max Temperature (Solid) 1	[°C]	29.53469947
SG FLUID OUT	[°C]	21.90475368
PRESSURE DROP	[lbf/in^2]	5.804960389

SG-Surface goal is a parameter on selected surface(s).
In this case, it is the entire tube side surface area.

RESULTS

Thermal Resistance: 0.0062°C/W

Pressure Drop: 5.80psi

Min Surface Temp: 23.19°C

Max Surface Temp: 29.56°C

Water Temp Out: 21.90°C

D6 STANDARD- HT-4P-1200



PARAMETERS

Fluid: Water

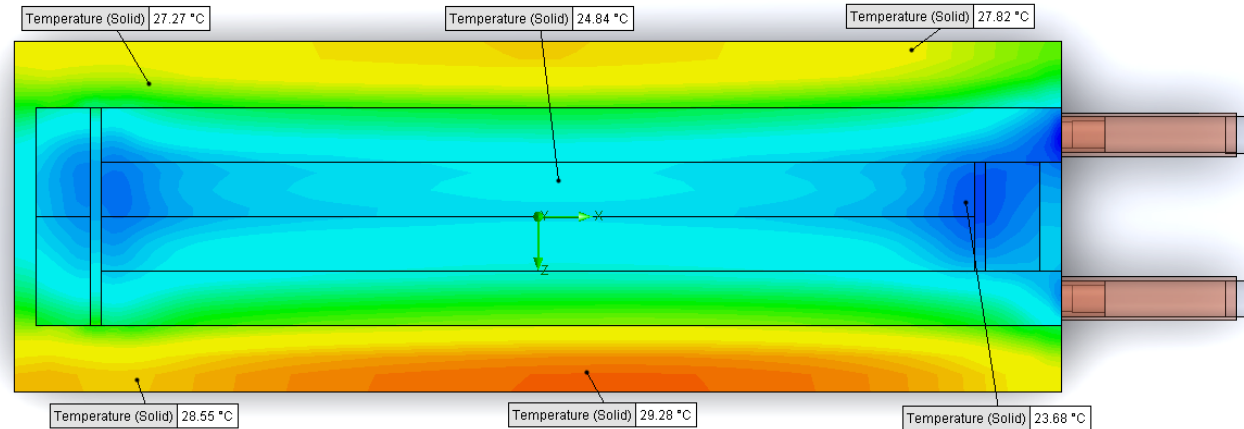
Inlet Flow: 3 gpm

Inlet Fluid Temp: 20°C

Heat Source: 1000W distributed

Surface Area: 4.0" x 12.0"

Tube: 5/8 Square copper with
1/2 OD round copper inlet/outlet



Simulation Data

Goal Name	Unit	Value
SG Min Temperature (Solid) 1	[°C]	22.36531016
SG Av Temperature (Solid) 1	[°C]	24.91226529
SG Max Temperature (Solid) 1	[°C]	27.91017462
SG FLUID OUT	[°C]	21.2830113
PRESSURE DROP	[lbf/in^2]	13.01940111

SG-Surface goal is a parameter on selected surface(s).
In this case, it is the entire tube side surface area.

RESULTS

Thermal Resistance: 0.0041°C/W

Pressure Drop: 13.01psi

Min Surface Temp: 22.36°C

Max Surface Temp: 27.91°C

Water Temp Out: 21.28°C