



**D6 INDUSTRIES
STANDARD PRODUCT
HT-4P-0600**

SIMULATION RESULTS

1-3 gpm flow rates
Distributed 1000W Heat Load

PARAMETERS

Fluid: Water

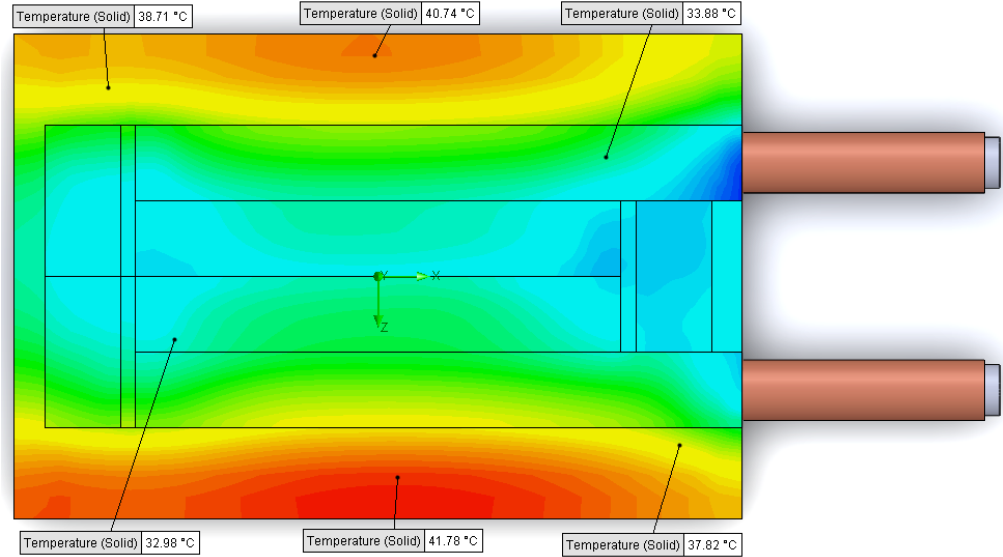
Inlet Flow: 1 gpm

Inlet Fluid Temp: 20°C

Heat Source: 1000W distributed

Surface Area: 4.0" x 6.0"

Tube: 5/8 Square copper with
1/2 OD round copper inlet/outlet



Simulation Data

Goal Name	Unit	Value
SG Min Temperature (Solid) 1	[°C]	29.32220675
SG Av Temperature (Solid) 1	[°C]	36.05610297
SG Max Temperature (Solid) 1	[°C]	42.57919429
SG FLUID OUT	[°C]	23.79800456
PRESSURE DROP	[lbf/in ²]	1.338142705

SG-Surface goal is a parameter on selected surface(s).
In this case, it is the entire tube side surface area.

RESULTS

Thermal Resistance: 0.016°C/W

Pressure Drop: 1.33 psi

Min Surface Temp: 29.32°C

Max Surface Temp: 42.57°C

Water Temp Out: 23.79°C

D6 STANDARD- HT-4P-0600



PARAMETERS

Fluid: Water

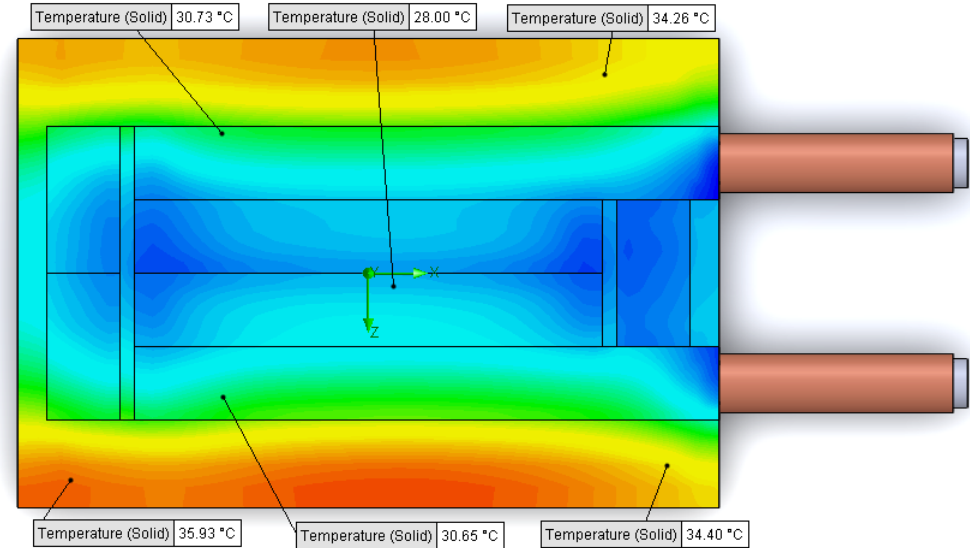
Inlet Flow: 2 gpm

Inlet Fluid Temp: 20°C

Heat Source: 1000W distributed

Surface Area: 4.0" x 6.0"

Tube: 5/8 Square copper with
1/2 OD round copper inlet/outlet



Simulation Data

Goal Name	Unit	Value
SG Min Temperature (Solid) 1	[°C]	26.25250817
SG Av Temperature (Solid) 1	[°C]	30.89187577
SG Max Temperature (Solid) 1	[°C]	36.77207198
SG FLUID OUT	[°C]	21.90593513
PRESSURE DROP	[lbf/in^2]	5.215428815

SG-Surface goal is a parameter on selected surface(s).
In this case, it is the entire tube side surface area.

RESULTS

Thermal Resistance: 0.010°C/W

Pressure Drop: 5.21 psi

Min Surface Temp: 26.25°C

Max Surface Temp: 36.77°C

Water Temp Out: 21.90°C

PARAMETERS

Fluid: Water

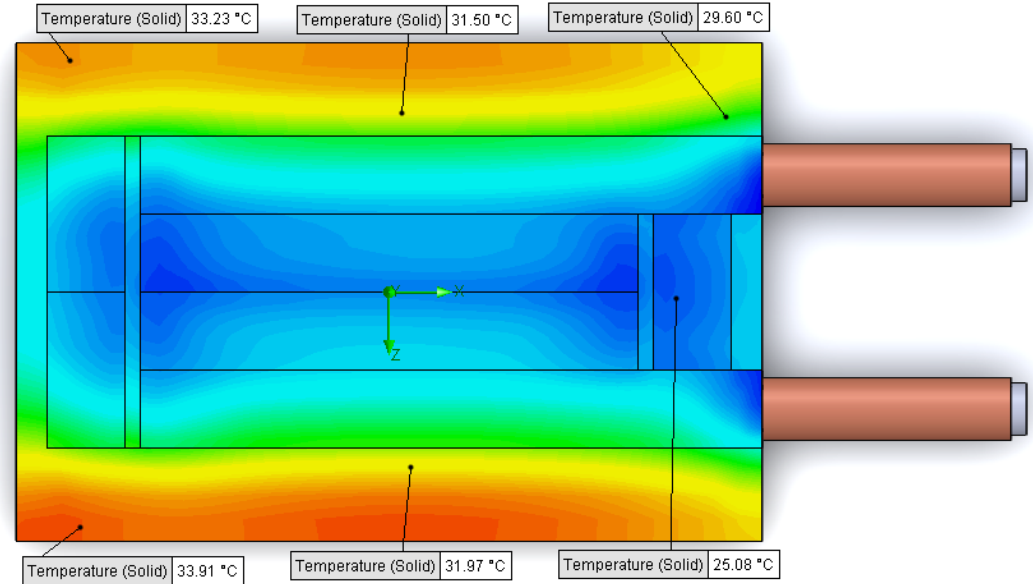
Inlet Flow: 3 gpm

Inlet Fluid Temp: 20°C

Heat Source: 1000W distributed

Surface Area: 4.0" x 6.0"

Tube: 5/8 Square copper with
1/2 OD round copper inlet/outlet



Simulation Data

Goal Name	Unit	Value
SG Min Temperature (Solid) 1	[°C]	24.66826341
SG Av Temperature (Solid) 1	[°C]	28.83096953
SG Max Temperature (Solid) 1	[°C]	34.48835653
SG FLUID OUT	[°C]	21.28277441
PRESSURE DROP	[lbf/in^2]	11.64912673

SG-Surface goal is a parameter on selected surface(s).
In this case, it is the entire tube side surface area.

RESULTS

Thermal Resistance: 0.008°C/W

Pressure Drop: 11.64 psi

Min Surface Temp: 24.66°C

Max Surface Temp: 34.48°C

Water Temp Out: 21.28°C