



**D6 INDUSTRIES
STANDARD PRODUCT
HT-2P-1200**

SIMULATION RESULTS

1-3 gpm flow rates
Distributed 100W Heat Load

D6 STANDARD-HT-2P-1200



PARAMETERS

Fluid: Water

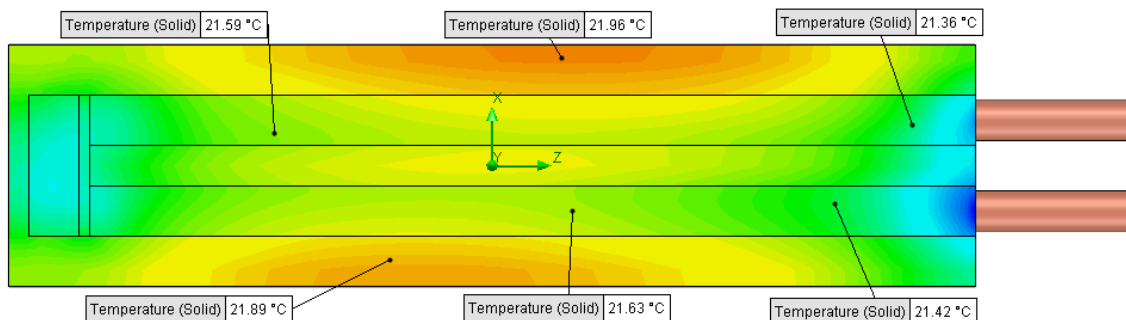
Inlet Flow: 1 gpm

Inlet Fluid Temp: 20°C

Heat Source: 100W distributed

Surface Area: 3.0" x 12.00"

Tube: 5/8 Square copper with
1/2 OD round copper inlet/outlet



Simulation Data

Goal Name	Unit	Value
SG Min Temperature (Solid) 1	[°C]	20.78022545
SG Av Temperature (Solid) 1	[°C]	21.63607841
SG Max Temperature (Solid) 1	[°C]	21.99615748
WATER OUT	[°C]	20.38028815
PRESSURE DROP	[lbf/in^2]	0.695352334

SG-Surface goal is a parameter on selected surface(s).
In this case, it is the entire tube side surface area.

RESULTS

Thermal Resistance: 0.016°C/W

Pressure Drop: 0.695 psi

Min Surface Temp: 20.78°C

Max Surface Temp: 21.99°C

Water Temp Out: 20.38°C

D6 STANDARD-HT-2P-1200



PARAMETERS

Fluid: Water

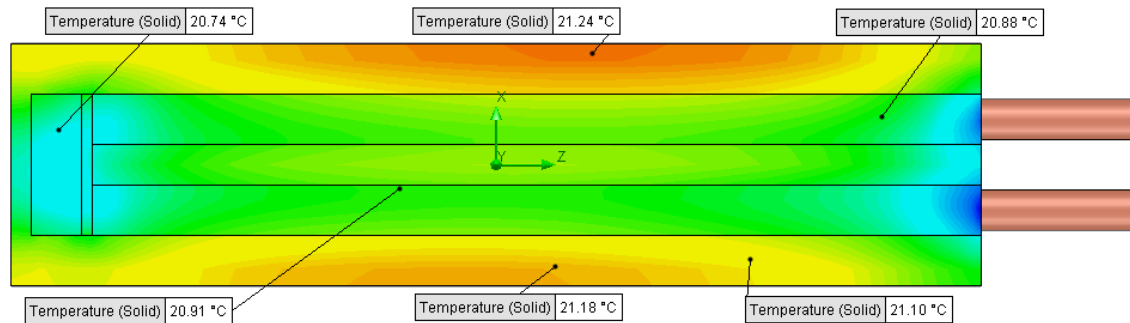
Inlet Flow: 2 gpm

Inlet Fluid Temp: 20°C

Heat Source: 100W distributed

Surface Area: 3.0" x 12.00"

Tube: 5/8 Square copper with
1/2 OD round copper inlet/outlet



Simulation Data

Goal Name	Unit	Value
SG Min Temperature (Solid) 1	[°C]	20.44905667
SG Av Temperature (Solid) 1	[°C]	20.98686038
SG Max Temperature (Solid) 1	[°C]	21.27522634
WATER OUT	[°C]	20.19378786
PRESSURE DROP	[lbf/in^2]	2.716926682

SG-Surface goal is a parameter on selected surface(s).
In this case, it is the entire tube side surface area.

RESULTS

Thermal Resistance: 0.009°C/W

Pressure Drop: 2.71 psi

Min Surface Temp: 20.44°C

Max Surface Temp: 21.27°C

Water Temp Out: 20.19°C

D6 STANDARD-HT-2P-1200



PARAMETERS

Fluid: Water

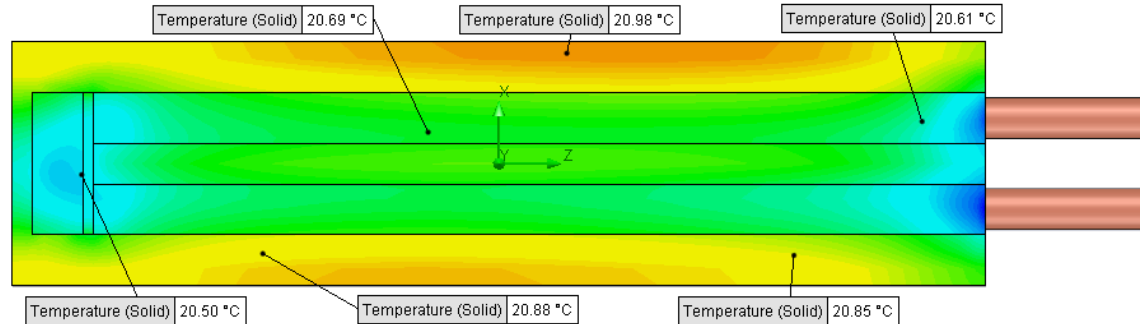
Inlet Flow: 3 gpm

Inlet Fluid Temp: 20°C

Heat Source: 100W distributed

Surface Area: 3.0" x 12.00"

Tube: 5/8 Square copper with
1/2 OD round copper inlet/outlet



Simulation Data

Goal Name	Unit	Value
SG Min Temperature (Solid) 1	[°C]	20.32023804
SG Av Temperature (Solid) 1	[°C]	20.76007174
SG Max Temperature (Solid) 1	[°C]	21.01677531
WATER OUT	[°C]	20.13568315
PRESSURE DROP	[lbf/in^2]	6.071903242

SG-Surface goal is a parameter on selected surface(s).
In this case, it is the entire tube side surface area.

RESULTS

Thermal Resistance: 0.007°C/W

Pressure Drop: 6.07 psi

Min Surface Temp: 20.32°C

Max Surface Temp: 21.01°C

Water Temp Out: 20.13°C