



**D6 INDUSTRIES
STANDARD PRODUCT
HT-2P-0225**

SIMULATION RESULTS

1-3 gpm flow rates
Distributed 100W Heat Load

D6 STANDARD-HT-2P-0225



PARAMETERS

Fluid: Water

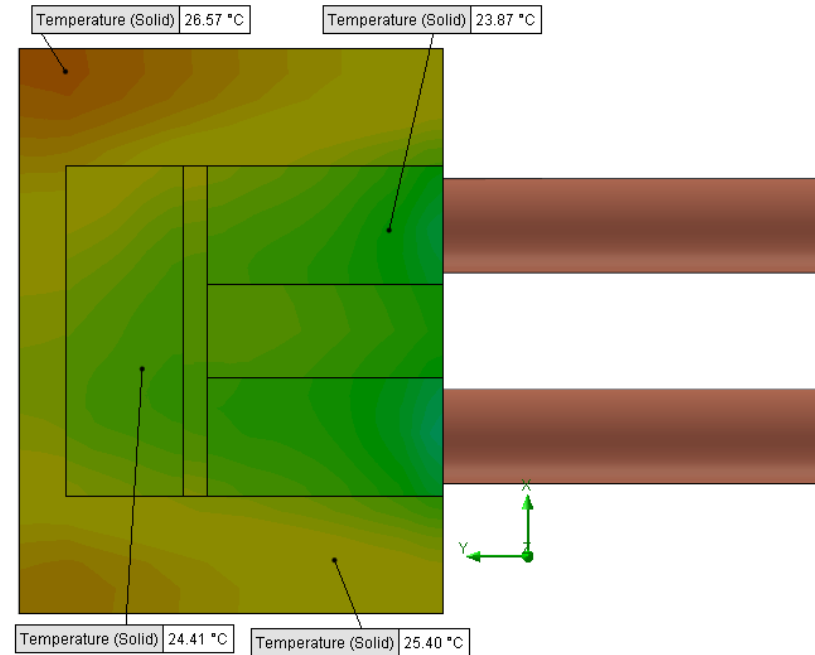
Inlet Flow: 1 gpm

Inlet Fluid Temp: 20°C

Heat Source: 100W distributed

Surface Area: 3.0" x 2.25"

Tube: 5/8 Square copper with
1/2 OD round copper inlet/outlet



Simulation Data

Goal Name	Unit	Value
SG Min Temp	[°C]	23.1363094
SG Av Temp	[°C]	25.00107157
SG Max Temp	[°C]	26.71515489
WATER OUT	[°C]	20.37752652
PRESSURE DROP	[lbf/in^2]	0.615390412

SG-Surface goal is a parameter on selected surface(s).
In this case, it is the entire tube side surface area.

RESULTS

Thermal Resistance: 0.050°C/W

Pressure Drop: 0.61 psi

Min Surface Temp: 23.13°C

Max Surface Temp: 26.71°C

Water Temp Out: 20.37°C

D6 STANDARD-HT-2P-0225



PARAMETERS

Fluid: Water

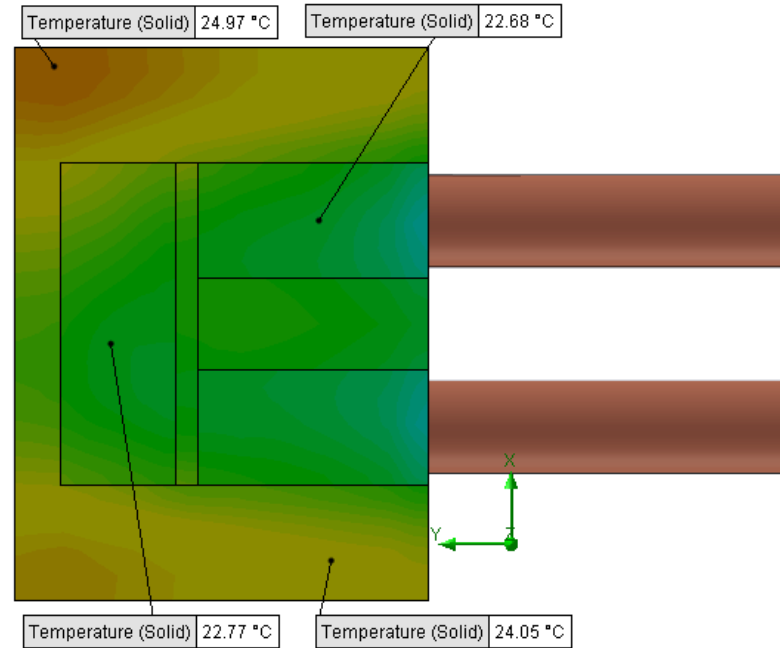
Inlet Flow: 2 gpm

Inlet Fluid Temp: 20°C

Heat Source: 100W distributed

Surface Area: 3.0" x 2.25"

Tube: 5/8 Square copper with
1/2 OD round copper inlet/outlet



Simulation Data

Goal Name	Unit	Value
SG Min Temp	[°C]	21.98603979
SG Av Temp	[°C]	23.45085329
SG Max Temp	[°C]	25.10899297
WATER OUT	[°C]	20.19260352
PRESSURE DROP	[lbf/in^2]	2.455827602

SG-Surface goal is a parameter on selected surface(s).
In this case, it is the entire tube side surface area.

RESULTS

Thermal Resistance: 0.034°C/W

Pressure Drop: 2.45 psi

Min Surface Temp: 21.98°C

Max Surface Temp: 25.10°C

Water Temp Out: 20.19°C

D6 STANDARD-HT-2P-0225



PARAMETERS

Fluid: Water

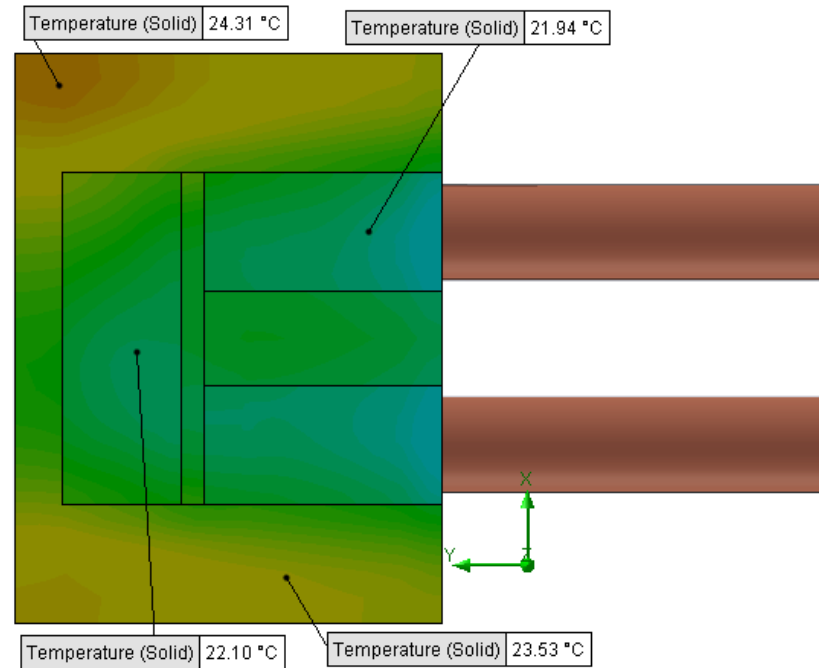
Inlet Flow: 3 gpm

Inlet Fluid Temp: 20°C

Heat Source: 100W distributed

Surface Area: 3.0" x 2.25"

Tube: 5/8 Square copper with
1/2 OD round copper inlet/outlet



Simulation Data

Goal Name	Unit	Value
SG Min Temp	[°C]	21.48369754
SG Av Temp	[°C]	22.84609219
SG Max Temp	[°C]	24.46572508
WATER OUT	[°C]	20.13426828
PRESSURE DROP	[lbf/in^2]	5.485713605

SG-Surface goal is a parameter on selected surface(s).
In this case, it is the entire tube side surface area.

RESULTS

Thermal Resistance: 0.028°C/W

Pressure Drop: 5.48 psi

Min Surface Temp: 21.48°C

Max Surface Temp: 24.46°C

Water Temp Out: 20.13°C