



**D6 INDUSTRIES**  
**STANDARD PRODUCT**  
**TAP1000-4**  
**SIMULATION RESULTS**

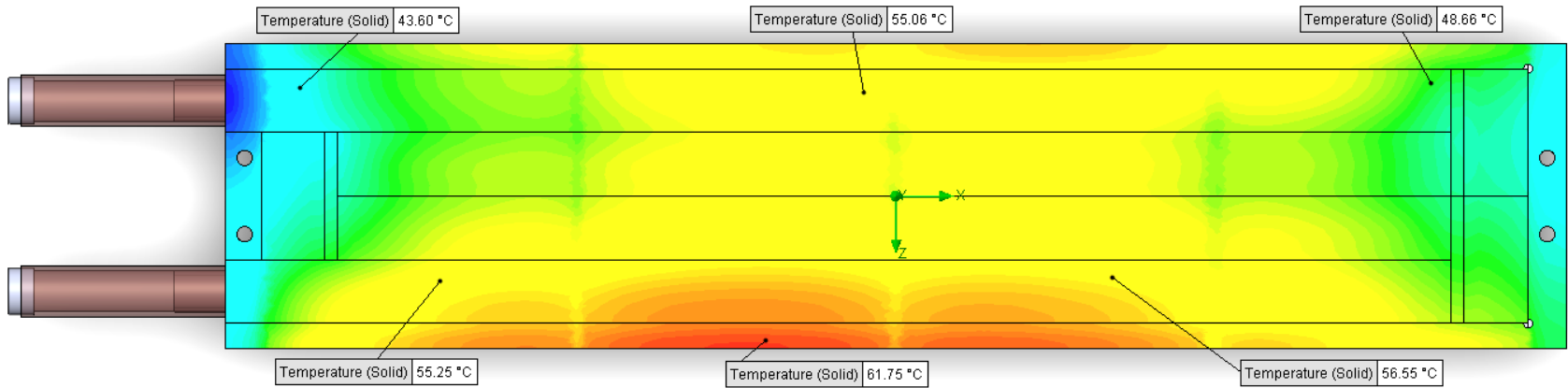
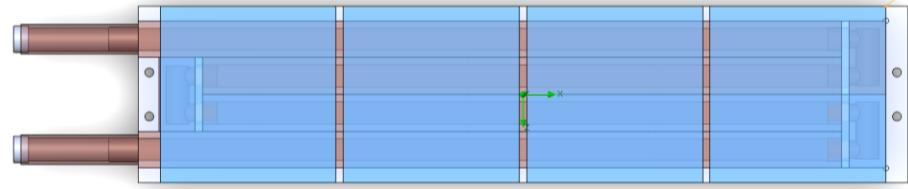
1-3 gpm flow rates  
1000W Heat Load-4 places  
4000W Total

# D6 STANDARD- TAP1000-4 (1gpm)



## PARAMETERS

Fluid: Water  
 Inlet Flow: 1 gpm  
 Inlet Fluid Temp: 20°C  
 Heat Source: 1 blue square=1000W (4000W total)  
 Tube: ½ OD round copper inlet/outlet



## Simulation Data

Goal Name	Unit	Value
SG Min Temperature (Solid) 1	[°C]	34.68044203
SG Av Temperature (Solid) 1	[°C]	52.46662458
SG Max Temperature (Solid) 1	[°C]	61.95491255
WATER OUT	[°C]	35.76910193
Pressure Drop	[lbf/in <sup>2</sup> ]	1.378723119

## RESULTS

Thermal Resistance: 0.0081°C/W  
 Pressure Drop: 1.37psi  
 Min Surface Temp: 34.68°C  
 Max Surface Temp: 61.95°C  
 Water Temp Out: 35.76°C

SG-Surface goal is a parameter on selected surface(s).  
 In this case, it is the entire tube side surface area.

# D6 STANDARD- TAP1000-4 (1.5gpm)



## PARAMETERS

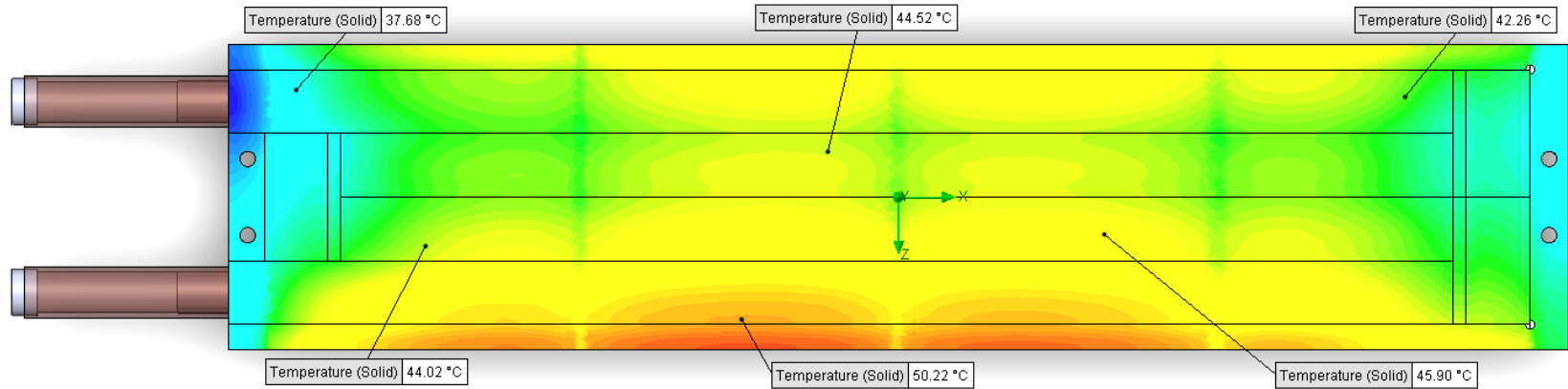
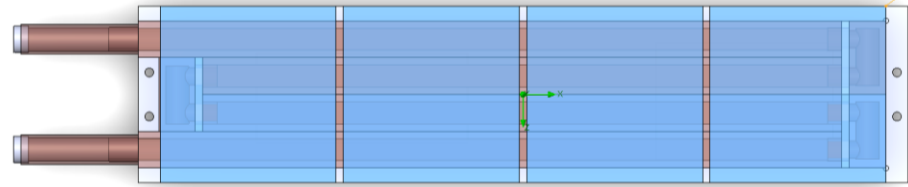
Fluid: Water

Inlet Flow: 1.5 gpm

Inlet Fluid Temp: 20°C

Heat Source: 1 blue square=1000W (4000W total)

Tube: ½ OD round copper inlet/outlet



## Simulation Data

Goal Name	Unit	Value
SG Min Temperature (Solid) 1	[°C]	30.4254066
SG Av Temperature (Solid) 1	[°C]	44.01898359
SG Max Temperature (Solid) 1	[°C]	51.74105427
WATER OUT	[°C]	30.64548364
Pressure Drop	[lbf/in <sup>2</sup> ]	3.069654625

## RESULTS

Thermal Resistance: 0.0060°C/W

Pressure Drop: 3.06psi

Min Surface Temp: 30.42°C

Max Surface Temp: 51.74°C

Water Temp Out: 30.64°C

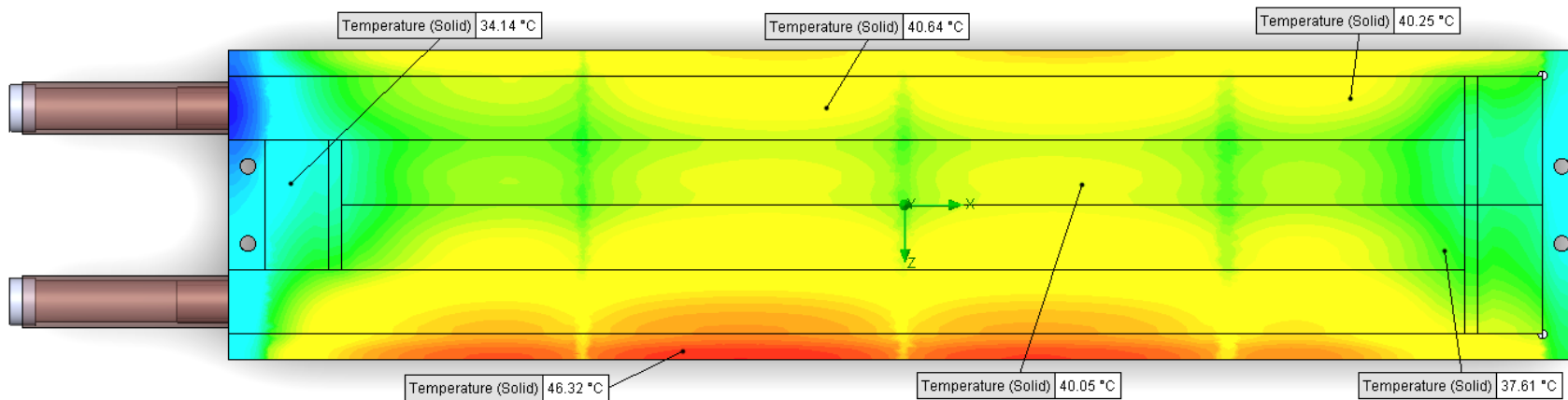
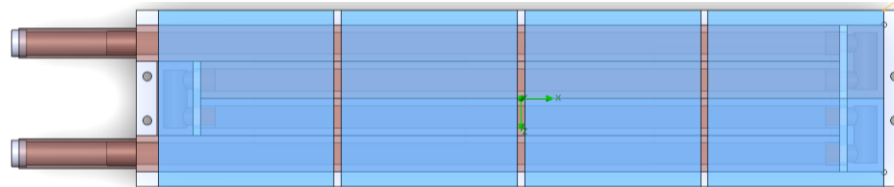
SG-Surface goal is a parameter on selected surface(s).  
In this case, it is the entire tube side surface area.

# D6 STANDARD- TAP1000-4 (2gpm)



## PARAMETERS

Fluid: Water  
 Inlet Flow: 2 gpm  
 Inlet Fluid Temp: 20°C  
 Heat Source: 1 blue square=1000W (4000W total)  
 Tube: ½ OD round copper inlet/outlet



## Simulation Data

Goal Name	Unit	Value
SG Min Temperature (Solid) 1	[°C]	27.57935896
SG Av Temperature (Solid) 1	[°C]	39.69317828
SG Max Temperature (Solid) 1	[°C]	46.62968347
WATER OUT	[°C]	28.05848826
Pressure Drop	[lbf/in^2]	5.432996815

SG-Surface goal is a parameter on selected surface(s).  
 In this case, it is the entire tube side surface area.

## RESULTS

Thermal Resistance: 0.0049°C/W  
 Pressure Drop: 5.43psi  
 Min Surface Temp: 27.57°C  
 Max Surface Temp: 46.62°C  
 Water Temp Out: 28.05°C

# D6 STANDARD- TAP1000-4 (3gpm)



## PARAMETERS

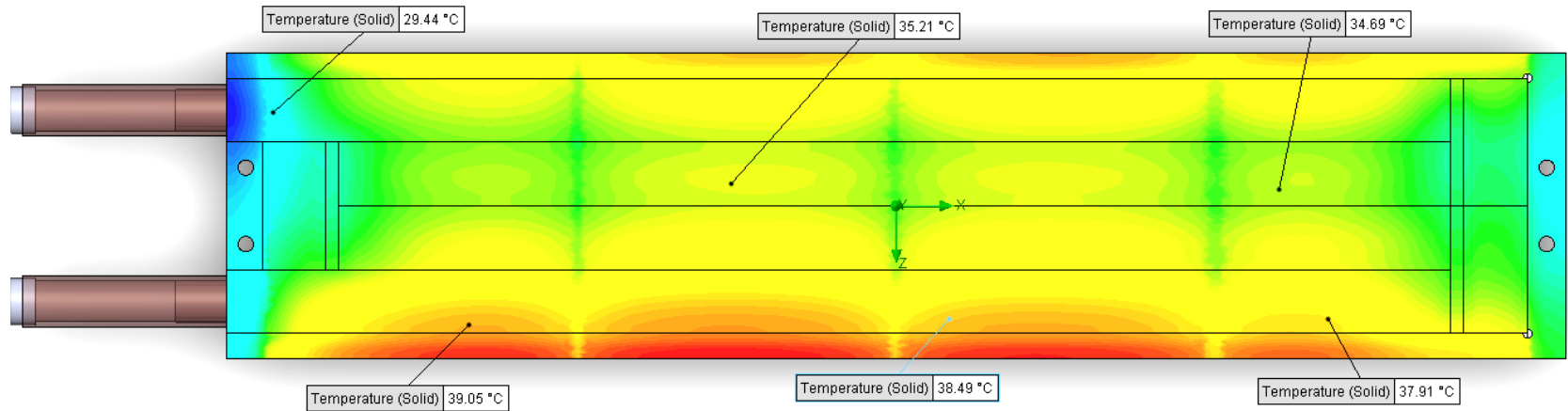
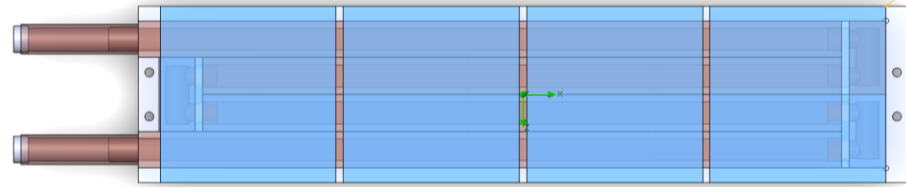
Fluid: Water

Inlet Flow: 3 gpm

Inlet Fluid Temp: 20°C

Heat Source: 1 blue square=1000W (4000W total)

Tube: ½ OD round copper inlet/outlet



## Simulation Data

Goal Name	Unit	Value
SG Min Temperature (Solid) 1	[°C]	24.79980428
SG Av Temperature (Solid) 1	[°C]	35.15760965
SG Max Temperature (Solid) 1	[°C]	41.15253137
WATER OUT	[°C]	25.46174809
Pressure Drop	[lbf/in^2]	12.17079028

SG-Surface goal is a parameter on selected surface(s).  
In this case, it is the entire tube side surface area.

## RESULTS

Thermal Resistance: 0.0037°C/W

Pressure Drop: 12.17psi

Min Surface Temp: 24.79°C

Max Surface Temp: 41.15°C

Water Temp Out: 25.46°C