



D6 INDUSTRIES
STANDARD PRODUCT
HT-TAP1000-1
SIMULATION RESULTS

1-3 gpm flow rates
1000W Heat Load

D6 STANDARD HT-TAP1000-1 (1gpm)



PARAMETERS

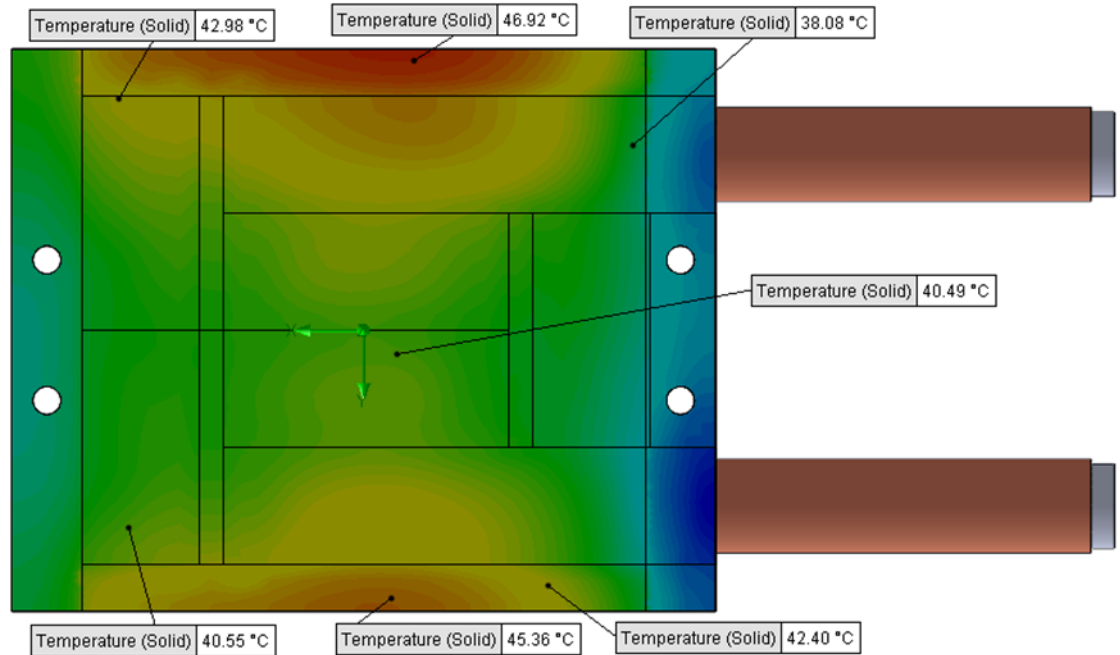
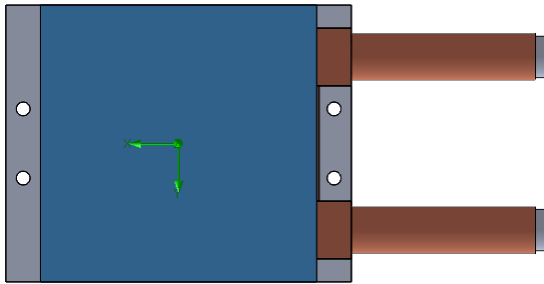
Fluid: Water

Inlet Flow: 1 gpm

Inlet Fluid Temp: 20°C

Heat Source: 1 blue square=1000W

Tube: ½ OD round copper inlet/outlet



Simulation Data

Goal Name	Unit	Value
SG Min Temperature (Solid) 1	[°C]	30.47167605
SG Av Temperature (Solid) 1	[°C]	40.21484073
SG Max Temperature (Solid) 1	[°C]	47.05854363
WATER OUT	[°C]	23.80121868
PRESSURE DROP	[lbf/in ²]	1.167436856

RESULTS

Thermal Resistance: 0.0202°C/W

Pressure Drop: 1.16psi

Min Surface Temp: 30.47°C

Max Surface Temp: 47.05°C

Water Temp Out: 23.80°C

SG-Surface goal is a parameter on selected surface(s).
In this case, it is the entire tube side surface area.

D6 STANDARD HT-TAP1000-1 (1.5gpm)



PARAMETERS

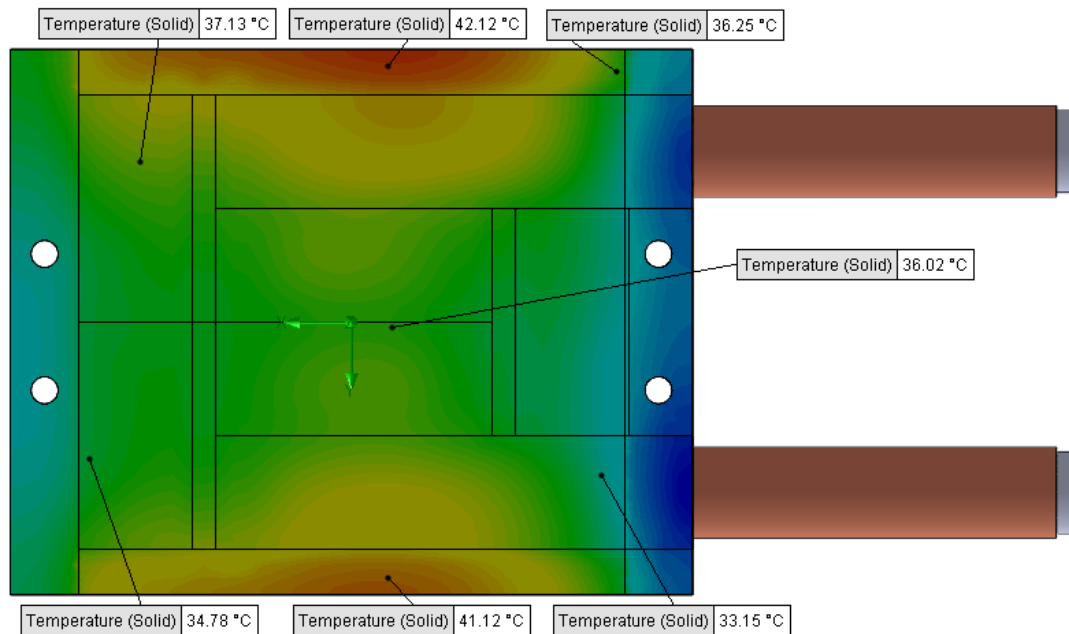
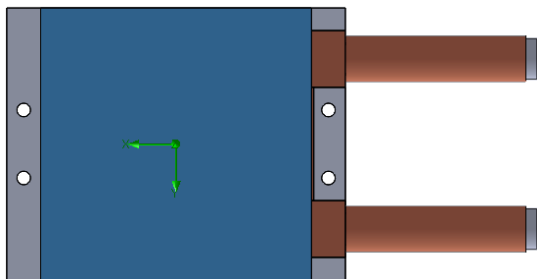
Fluid: Water

Inlet Flow: 1.5 gpm

Inlet Fluid Temp: 20°C

Heat Source: 1 blue square=1000W

Tube: 1/2 OD round copper inlet/outlet



Simulation Data

Goal Name	Unit	Value
SG Min Temperature (Solid) 1	[°C]	27.71286548
SG Av Temperature (Solid) 1	[°C]	36.01393302
SG Max Temperature (Solid) 1	[°C]	42.37803846
WATER OUT	[°C]	22.53618551
PRESSURE DROP	[lbf/in^2]	2.597939953

SG-Surface goal is a parameter on selected surface(s).
In this case, it is the entire tube side surface area.

RESULTS

Thermal Resistance: 0.0160°C/W

Pressure Drop: 2.59psi

Min Surface Temp: 27.71°C

Max Surface Temp: 42.37°C

Water Temp Out: 22.53°C

D6 STANDARD HT-TAP1000-1 (2gpm)



PARAMETERS

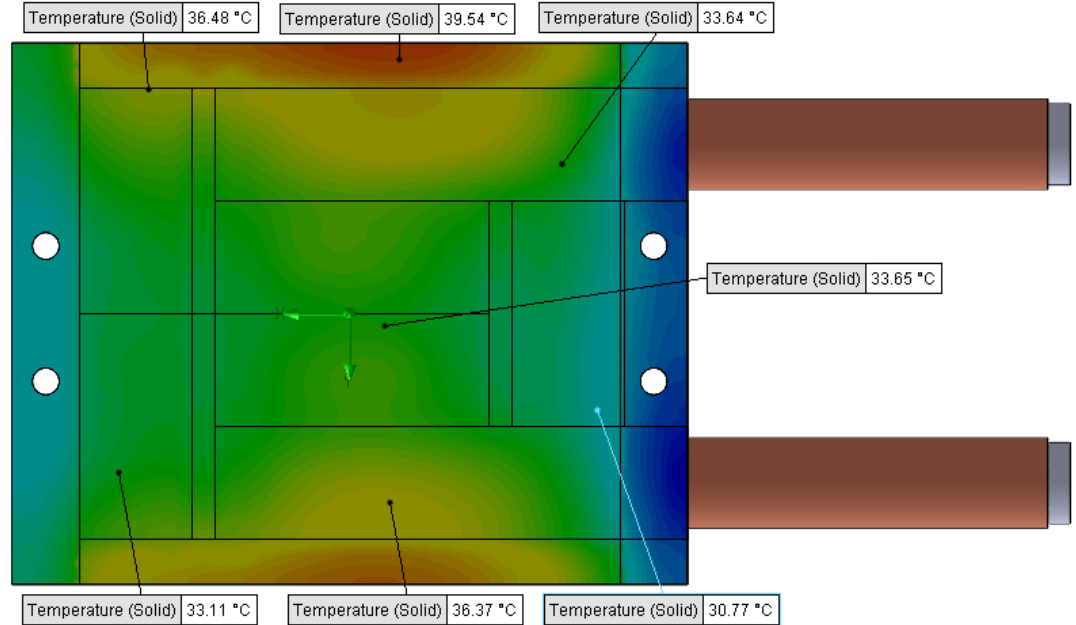
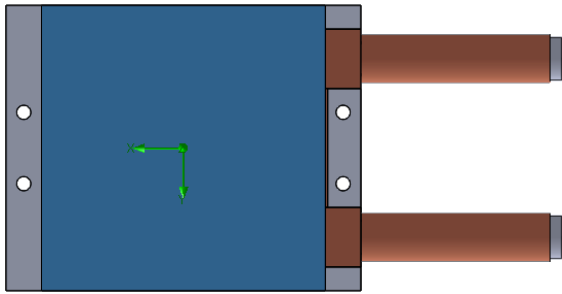
Fluid: Water

Inlet Flow: 2 gpm

Inlet Fluid Temp: 20°C

Heat Source: 1 blue square=1000W

Tube: ½ OD round copper inlet/outlet



Simulation Data

Goal Name	Unit	Value
SG Min Temperature (Solid) 1	[°C]	26.1975399
SG Av Temperature (Solid) 1	[°C]	33.60844431
SG Max Temperature (Solid) 1	[°C]	39.80045393
WATER OUT	[°C]	21.90396987
PRESSURE DROP	[lbf/in ²]	4.599708648

RESULTS

Thermal Resistance: 0.0136°C/W

Pressure Drop: 4.59psi

Min Surface Temp: 26.19°C

Max Surface Temp: 39.80°C

Water Temp Out: 21.90°C

SG-Surface goal is a parameter on selected surface(s).
In this case, it is the entire tube side surface area.

D6 STANDARD HT-TAP1000-1 (3gpm)



PARAMETERS

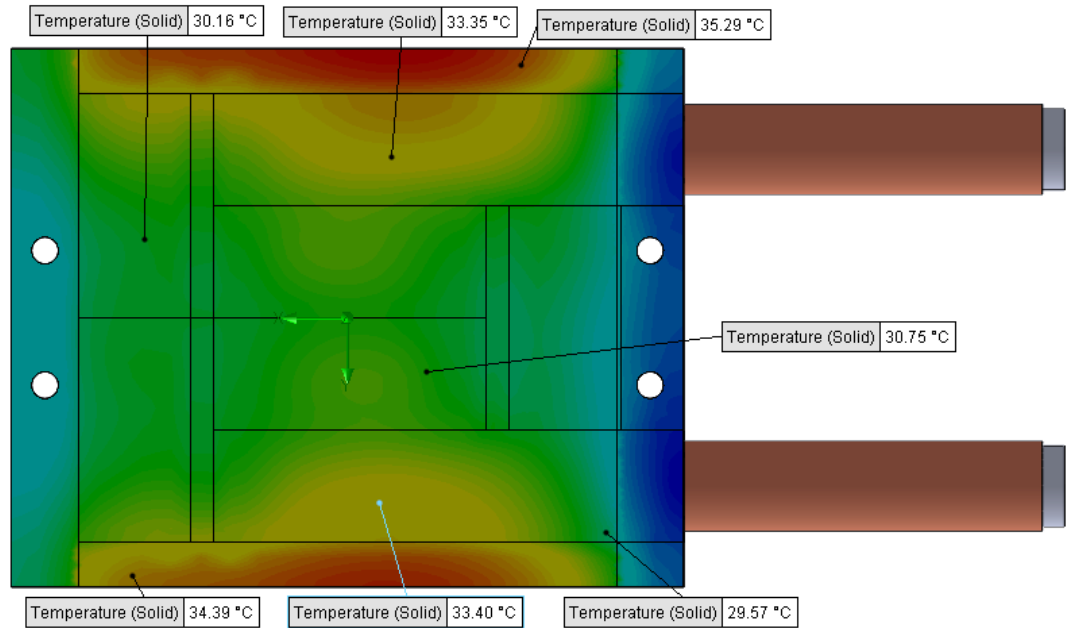
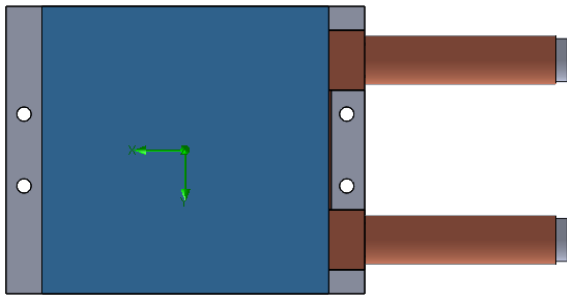
Fluid: Water

Inlet Flow: 3 gpm

Inlet Fluid Temp: 20°C

Heat Source: 1 blue square=1000W

Tube: ½ OD round copper inlet/outlet



Simulation Data

Goal Name	Unit	Value
SG Min Temperature (Solid) 1	[°C]	24.38054553
SG Av Temperature (Solid) 1	[°C]	30.88352596
SG Max Temperature (Solid) 1	[°C]	36.83462538
WATER OUT	[°C]	21.280974
PRESSURE DROP	[lbf/in ²]	10.2691525

SG-Surface goal is a parameter on selected surface(s).
In this case, it is the entire tube side surface area.

RESULTS

Thermal Resistance: 0.0108°C/W

Pressure Drop: 10.26psi

Min Surface Temp: 24.38°C

Max Surface Temp: 36.83°C

Water Temp Out: 21.28°C