



**D6 INDUSTRIES
STANDARD PRODUCT
HB-6P-2000-CU-C**

SIMULATION RESULTS

1-3 gpm flow rates
Distributed 1000W

D6 STANDARD- HB-6P-2000-CU-C



PARAMETERS

Fluid: Water

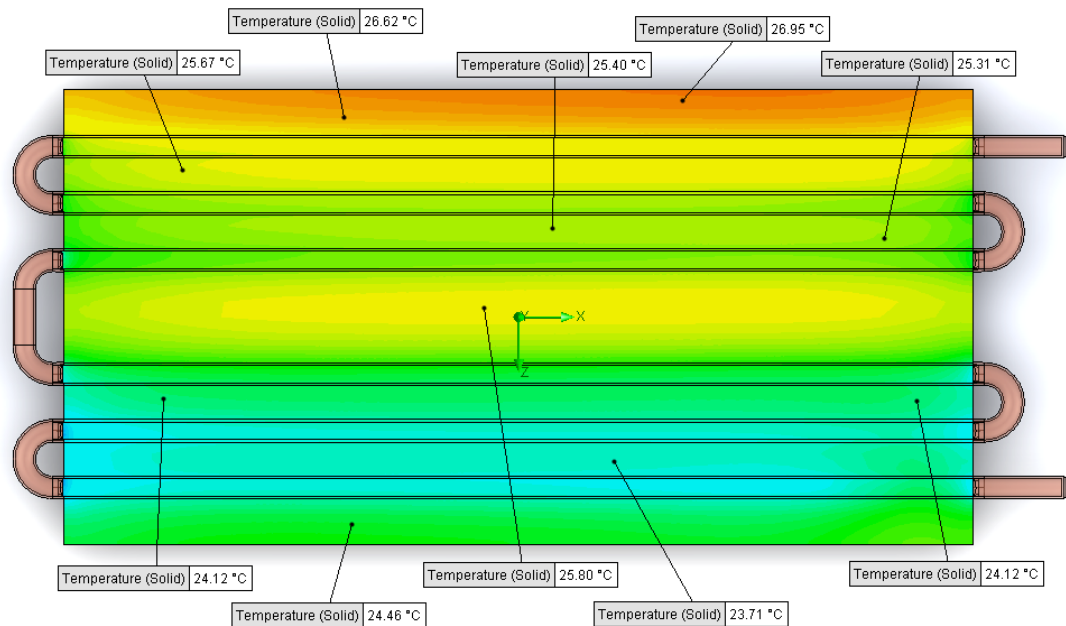
Inlet Flow: 1 gpm

Inlet Fluid Temp: 20°C

Heat Source: 1000W distributed

Surface Area: 10.0" x 20.0"

Tube: 1/2 OD Copper



Simulation Data

Goal Name	Unit	Value
SG Min Temperature (Solid) 1	[°C]	21.92885772
SG Av Temperature (Solid) 1	[°C]	25.01490698
SG Max Temperature (Solid) 1	[°C]	27.01156579
SG Av Temp-WATER OUT	[°C]	23.78790743
PRESSURE DROP	[lbf/in^2]	0.723492064

SG-Surface goal is a parameter on selected surface(s).
In this case, it is the entire tube side surface area.

RESULTS

Thermal Resistance: 0.0050°C/W

Pressure Drop: 0.723 psi

Min Surface Temp: 21.93°C

Max Surface Temp: 27.01°C

Water Temp Out: 23.79°C

D6 STANDARD- HB-6P-2000-CU-C



PARAMETERS

Fluid: Water

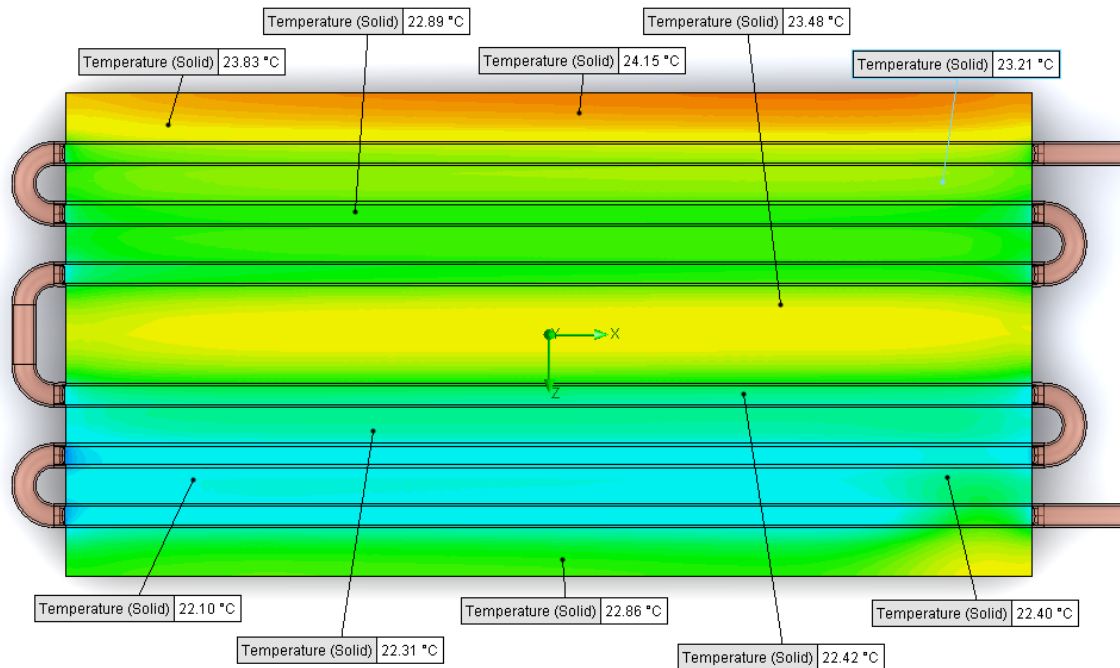
Inlet Flow: 2 gpm

Inlet Fluid Temp: 20°C

Heat Source: 1000W distributed

Surface Area: 10.0" x 20.0"

Tube: 1/2 OD Copper



Simulation Data

Goal Name	Unit	Value
SG Min Temperature (Solid) 1	[°C]	20.88518073
SG Av Temperature (Solid) 1	[°C]	22.91841652
SG Max Temperature (Solid) 1	[°C]	24.33371847
SG Av Temp-WATER OUT	[°C]	21.89954995
PRESSURE DROP	[lbf/in^2]	2.4978352

SG-Surface goal is a parameter on selected surface(s).
In this case, it is the entire tube side surface area.

RESULTS

Thermal Resistance: 0.0029°C/W

Pressure Drop: 2.49psi

Min Surface Temp: 20.88°C

Max Surface Temp: 24.33°C

Water Temp Out: 21.90°C

D6 STANDARD- HB-6P-2000-CU-C



PARAMETERS

Fluid: Water

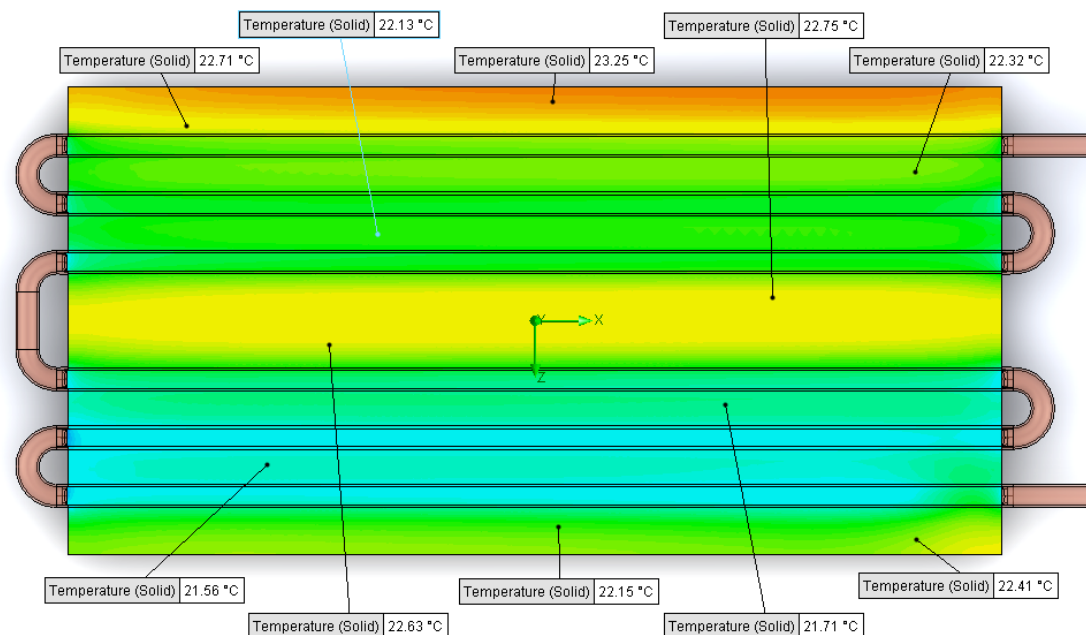
Inlet Flow: 3 gpm

Inlet Fluid Temp: 20°C

Heat Source: 1000W distributed

Surface Area: 10.0" x 20.0"

Tube: 1/2 OD Copper



Simulation Data

Goal Name	Unit	Value
SG Min Temperature (Solid) 1	[°C]	20.56722763
SG Av Temperature (Solid) 1	[°C]	22.16549623
SG Max Temperature (Solid) 1	[°C]	23.36779504
SG Av Temp-WATER OUT	[°C]	21.27220742
PRESSURE DROP	[lbf/in^2]	5.201539276

SG-Surface goal is a parameter on selected surface(s).
In this case, it is the entire tube side surface area.

RESULTS

Thermal Resistance: 0.0021°C/W
Pressure Drop: 5.20psi
Min Surface Temp: 20.57°C
Max Surface Temp: 23.37°C
Water Temp Out: 21.27°C