



**D6 INDUSTRIES  
STANDARD PRODUCT  
HB-6P-1600-CU-C**

**SIMULATION RESULTS**

1-3 gpm flow rates  
Distributed 1000W

# D6 STANDARD- HB-6P-1600-CU-C



## PARAMETERS

Fluid: Water

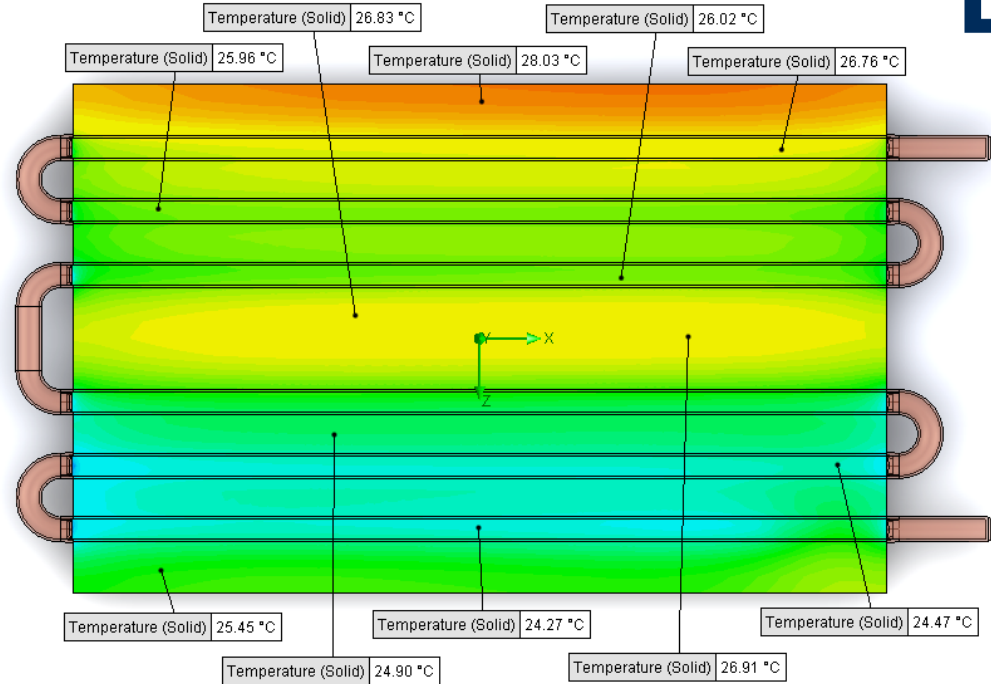
Inlet Flow: 1 gpm

Inlet Fluid Temp: 20°C

Heat Source: 1000W distributed

Surface Area: 10.0" x 16.0"

Tube: 1/2 OD Copper



## Simulation Data

Goal Name	Unit	Value
SG Min Temperature (Solid) 1	[°C]	21.77545575
SG Av Temperature (Solid) 1	[°C]	25.89559688
SG Max Temperature (Solid) 1	[°C]	28.19158852
SG Av Temp-WATER OUT	[°C]	23.79225369
PRESSURE DROP	[lbf/in^2]	0.611812577

SG-Surface goal is a parameter on selected surface(s).  
In this case, it is the entire tube side surface area.

## RESULTS

Thermal Resistance: 0.0058°C/W

Pressure Drop: 0.611psi

Min Surface Temp: 21.77°C

Max Surface Temp: 28.19°C

Water Temp Out: 23.79°C

# D6 STANDARD- HB-6P-1600-CU-C



## PARAMETERS

Fluid: Water

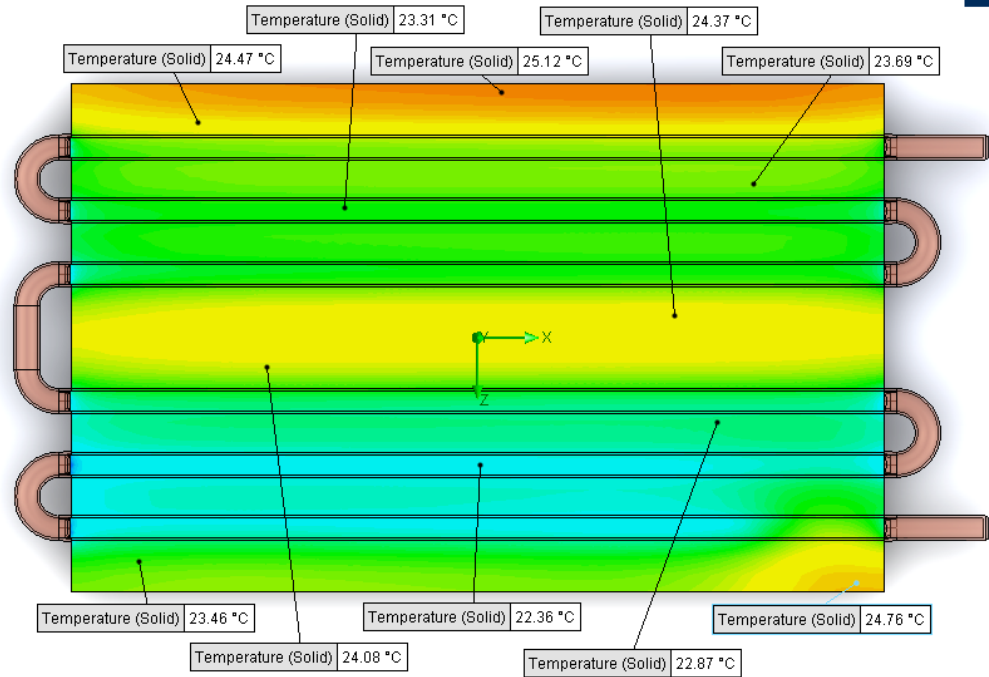
Inlet Flow: 2 gpm

Inlet Fluid Temp: 20°C

Heat Source: 1000W distributed

Surface Area: 10.0" x 16.0"

Tube: 1/2 OD Copper



## Simulation Data

Goal Name	Unit	Value
SG Min Temperature (Solid) 1	[°C]	20.76516939
SG Av Temperature (Solid) 1	[°C]	23.530849
SG Max Temperature (Solid) 1	[°C]	25.20264627
SG Av Temp-WATER OUT	[°C]	21.90033892
PRESSURE DROP	[lbf/in^2]	2.133529043

SG-Surface goal is a parameter on selected surface(s).  
In this case, it is the entire tube side surface area.

## RESULTS

Thermal Resistance: 0.0035°C/W

Pressure Drop: 2.13psi

Min Surface Temp: 20.76°C

Max Surface Temp: 25.20°C

Water Temp Out: 21.90°C

# D6 STANDARD- HB-6P-1600-CU-C



## PARAMETERS

Fluid: Water

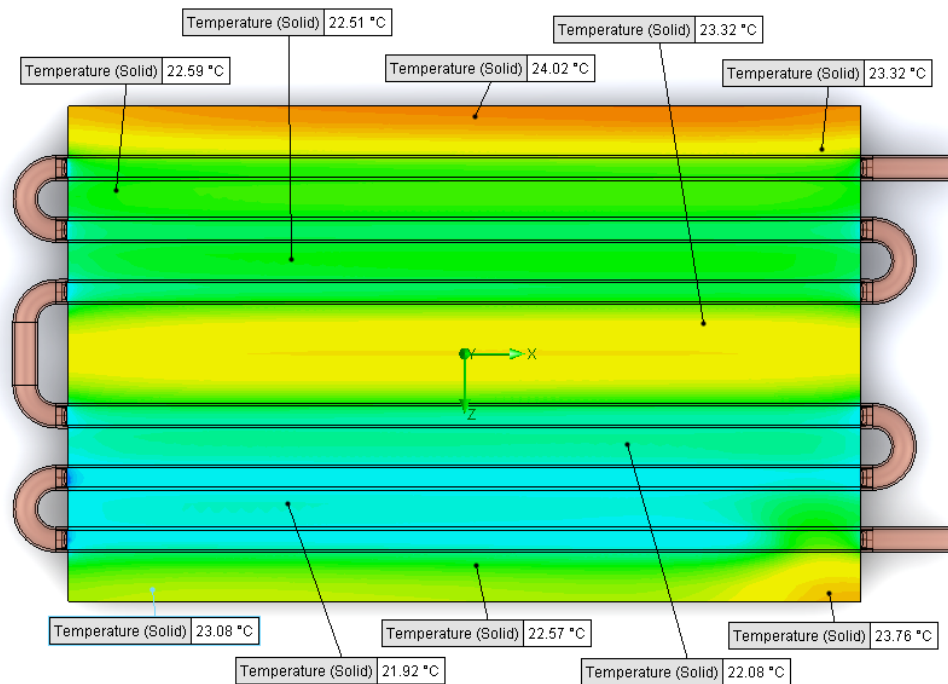
Inlet Flow: 3 gpm

Inlet Fluid Temp: 20°C

Heat Source: 1000W distributed

Surface Area: 10.0" x 16.0"

Tube: 1/2 OD Copper



## Simulation Data

Goal Name	Unit	Value
SG Min Temperature (Solid) 1	[°C]	20.47096804
SG Av Temperature (Solid) 1	[°C]	22.66553197
SG Max Temperature (Solid) 1	[°C]	24.11473118
SG Av Temp-WATER OUT	[°C]	21.27183093
PRESSURE DROP	[lbf/in^2]	4.469084565

SG-Surface goal is a parameter on selected surface(s).  
In this case, it is the entire tube side surface area.

## RESULTS

Thermal Resistance: .0026°C/W

Pressure Drop: 4.47psi

Min Surface Temp: 20.47°C

Max Surface Temp: 24.11°C

Water Temp Out: 21.27°C