



**D6 INDUSTRIES
STANDARD PRODUCT
HB-6P-1200-CU-C**

SIMULATION RESULTS

1-3 gpm flow rates
Distributed 1000W

D6 STANDARD- HB-6P-1200-CU-C



PARAMETERS

Fluid: Water

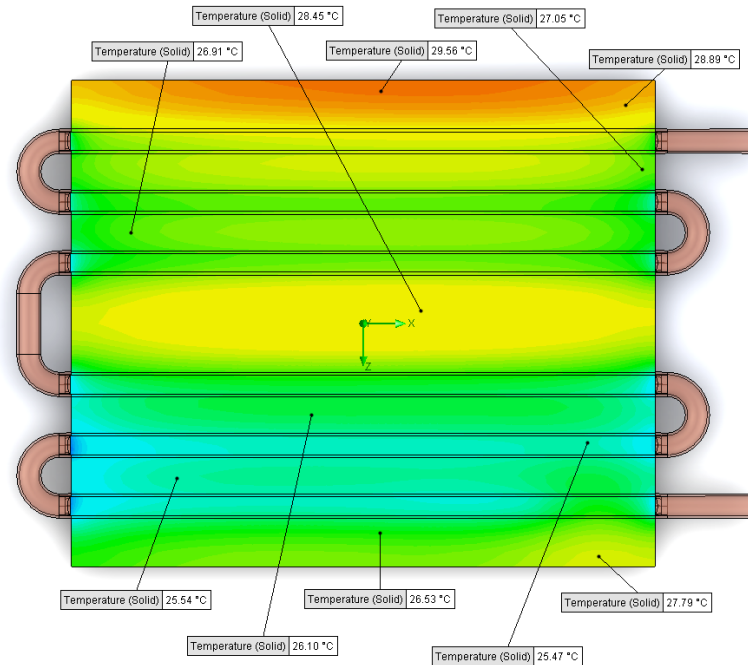
Inlet Flow: 1 gpm

Inlet Fluid Temp: 20°C

Heat Source: 1000W distributed

Surface Area: 10.0" x 12.0"

Tube: 1/2 OD Copper



Simulation Data

Goal Name	Unit	Value
SG Min Temperature (Solid) 1	[°C]	22.53814325
SG Av Temperature (Solid) 1	[°C]	27.03747594
SG Max Temperature (Solid) 1	[°C]	29.65050167
SG Av Temp-WATER OUT	[°C]	23.79690957
PRESSURE DROP	[lbf/in^2]	0.492095303

SG-Surface goal is a parameter on selected surface(s).
In this case, it is the entire tube side surface area.

RESULTS

Thermal Resistance: 0.0070°C/W

Pressure Drop: 0.49psi

Min Surface Temp: 22.54°C

Max Surface Temp: 29.65°C

Water Temp Out: 23.79°C

D6 STANDARD- HB-6P-1200-CU-C



PARAMETERS

Fluid: Water

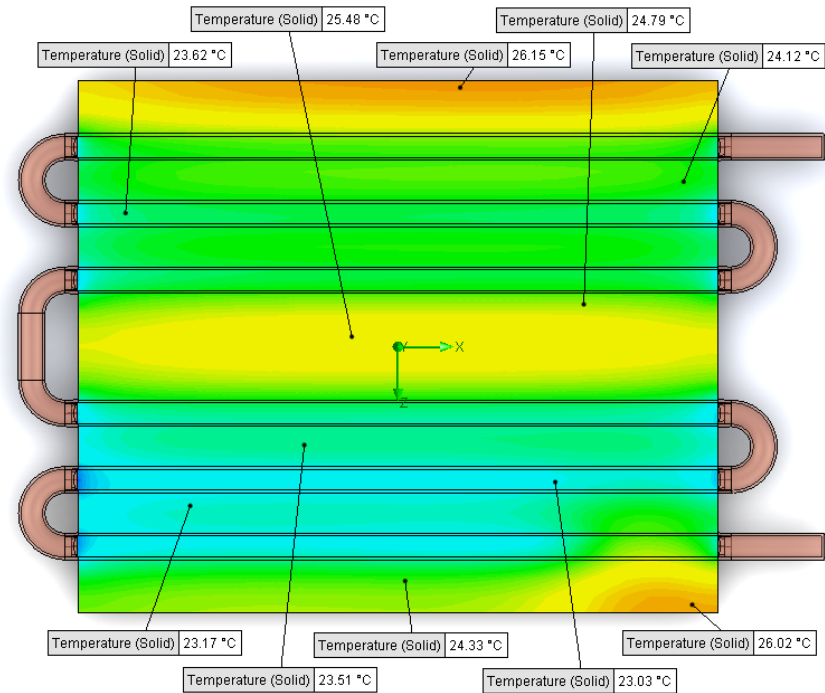
Inlet Flow: 2 gpm

Inlet Fluid Temp: 20°C

Heat Source: 1000W distributed

Surface Area: 10.0" x 12.0"

Tube: 1/2 OD Copper



Simulation Data

Goal Name	Unit	Value
SG Min Temperature (Solid) 1	[°C]	21.13590136
SG Av Temperature (Solid) 1	[°C]	24.24612265
SG Max Temperature (Solid) 1	[°C]	26.20321061
SG Av Temp-WATER OUT	[°C]	21.90193115
PRESSURE DROP	[lbf/in^2]	1.744212319

SG-Surface goal is a parameter on selected surface(s).
In this case, it is the entire tube side surface area.

RESULTS

Thermal Resistance: 0.0042°C/W

Pressure Drop: 1.74psi

Min Surface Temp: 21.13°C

Max Surface Temp: 26.20°C

Water Temp Out: 21.90°C

D6 STANDARD- HB-6P-1200-CU-C



PARAMETERS

Fluid: Water

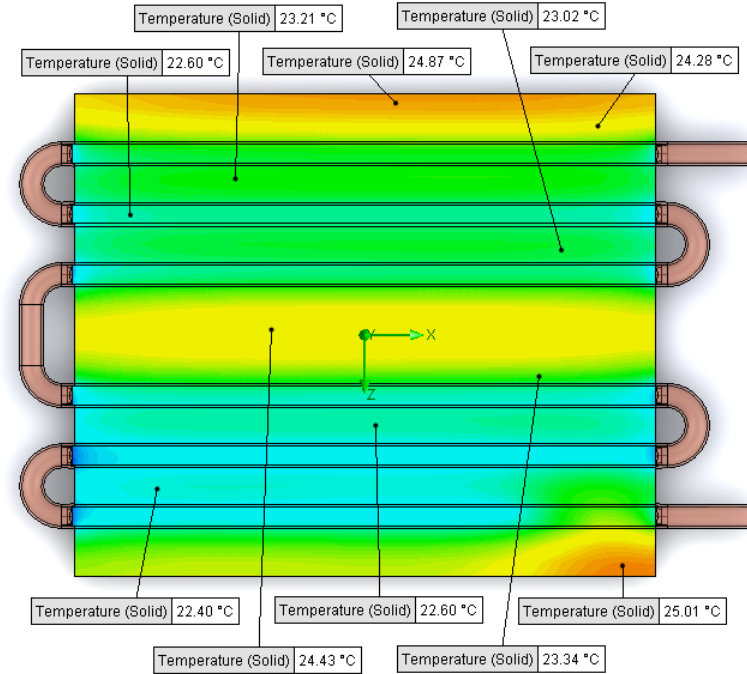
Inlet Flow: 3 gpm

Inlet Fluid Temp: 20°C

Heat Source: 1000W distributed

Surface Area: 10.0" x 12.0"

Tube: 1/2 OD Copper



Simulation Data

Goal Name	Unit	Value
SG Min Temperature (Solid) 1	[°C]	20.70878067
SG Av Temperature (Solid) 1	[°C]	23.22450102
SG Max Temperature (Solid) 1	[°C]	25.09529523
SG Av Temp-WATER OUT	[°C]	21.27193219
PRESSURE DROP	[lbf/in^2]	3.670237213

SG-Surface goal is a parameter on selected surface(s).
In this case, it is the entire tube side surface area.

RESULTS

Thermal Resistance: .0032°C/W

Pressure Drop: 3.67psi

Min Surface Temp: 20.71°C

Max Surface Temp: 25.09°C

Water Temp Out: 21.27°C