



D6 INDUSTRIES  
STANDARD PRODUCT  
HB-4P-2000-CU-C

SIMULATION RESULTS

1-2 gpm flow rates  
Distributed 500W

# D6 STANDARD- HB-4P-2000-CU-C



## PARAMETERS

Fluid: Water

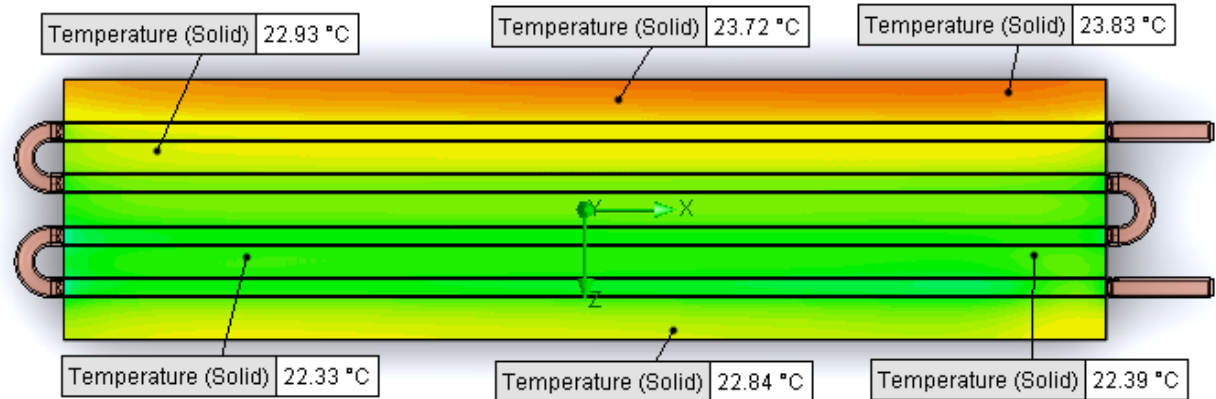
Inlet Flow: 1 gpm

Inlet Fluid Temp: 20°C

Heat Source: 500W distributed

Surface Area: 5.0" x 20.0"

Tube: 3/8 OD Copper



## Simulation Data

Goal Name	Unit	Value
SG Min Temperature (Solid) 1	[°C]	21.11396965
SG Av Temperature (Solid) 1	[°C]	22.73979001
SG Max Temperature (Solid) 1	[°C]	23.91419367
SG Av Temp-WATER OUT	[°C]	21.89523324
PRESSURE DROP	[lbf/in^2]	2.882786792

SG-Surface goal is a parameter on selected surface(s).  
In this case, it is the entire tube side surface area.

## RESULTS

Thermal Resistance: .0055°C/W

Pressure Drop: 2.88 psi

Min Surface Temp: 21.11°C

Max Surface Temp: 23.91°C

Water Temp Out: 21.90°C

# D6 STANDARD- HB-4P-2000-CU-C



## PARAMETERS

Fluid: Water

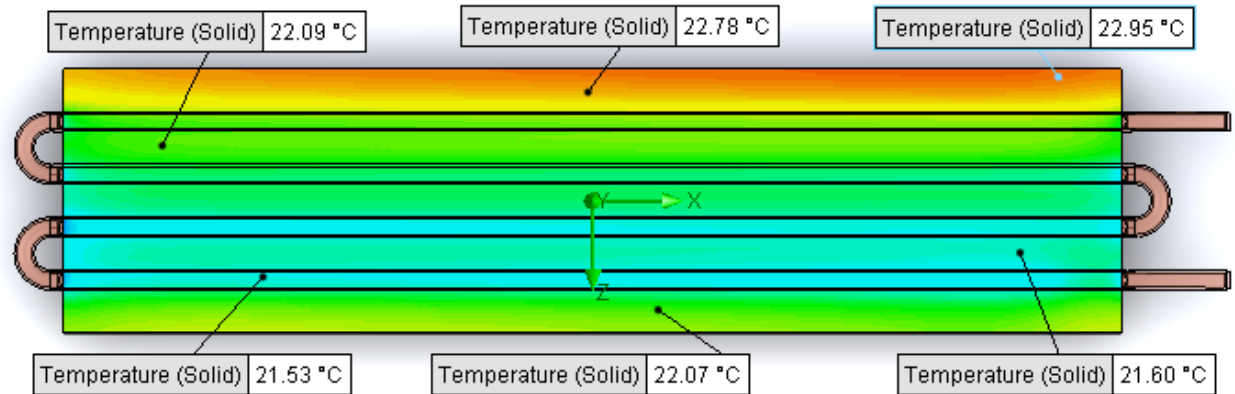
Inlet Flow: 1.5 gpm

Inlet Fluid Temp: 20°C

Heat Source: 500W distributed

Surface Area: 5.0" x 20.0"

Tube: 3/8 OD Copper



## Simulation Data

Goal Name	Unit	Value
SG Min Temperature (Solid) 1	[°C]	20.70191681
SG Av Temperature (Solid) 1	[°C]	21.98722034
SG Max Temperature (Solid) 1	[°C]	23.01413058
SG Av Temp-WATER OUT	[°C]	21.27084138
PRESSURE DROP	[lbf/in^2]	5.787033969

SG-Surface goal is a parameter on selected surface(s).  
In this case, it is the entire tube side surface area.

## RESULTS

Thermal Resistance: .0039°C/W

Pressure Drop: 5.79 psi

Min Surface Temp: 20.70°C

Max Surface Temp: 23.01°C

Water Temp Out: 21.27°C

# D6 STANDARD- HB-4P-2000-CU-C



## PARAMETERS

Fluid: Water

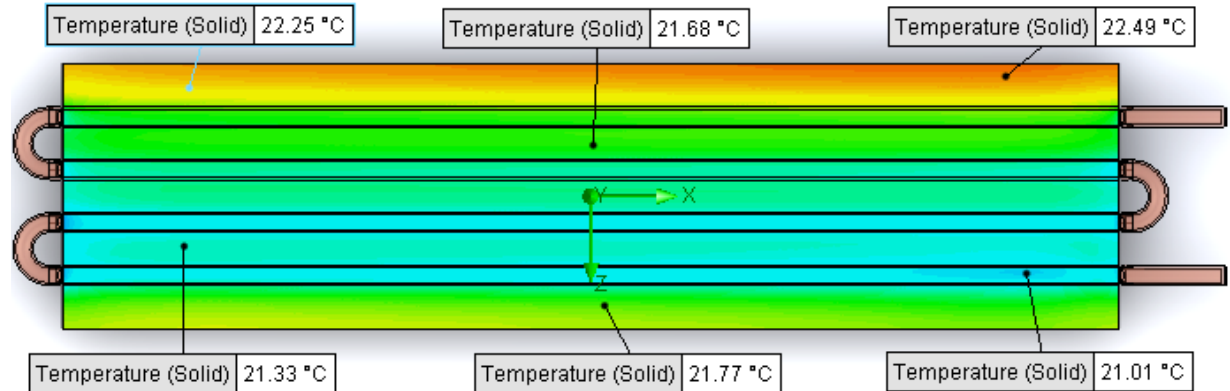
Inlet Flow: 2 gpm

Inlet Fluid Temp: 20°C

Heat Source: 500W distributed

Surface Area: 5.0" x 20.0"

Tube: 3/8 OD Copper



## Simulation Data

Goal Name	Unit	Value
SG Min Temperature (Solid) 1	[°C]	20.50867652
SG Av Temperature (Solid) 1	[°C]	21.60783074
SG Max Temperature (Solid) 1	[°C]	22.54858021
SG Av Temp-WATER OUT	[°C]	20.96194787
PRESSURE DROP	[lbf/in^2]	9.672762923

SG-Surface goal is a parameter on selected surface(s).  
In this case, it is the entire tube side surface area.

## RESULTS

Thermal Resistance: .0032°C/W

Pressure Drop: 9.67 psi

Min Surface Temp: 20.50°C

Max Surface Temp: °22.55C

Water Temp Out: 20.96°C