



**D6 INDUSTRIES**  
**STANDARD PRODUCT**  
**HB-4P-1600-CU-C**

**SIMULATION RESULTS**

1-2 gpm flow rates  
Distributed 500W

# D6 STANDARD- HB-4P-1600-CU-C



## PARAMETERS

Fluid: Water

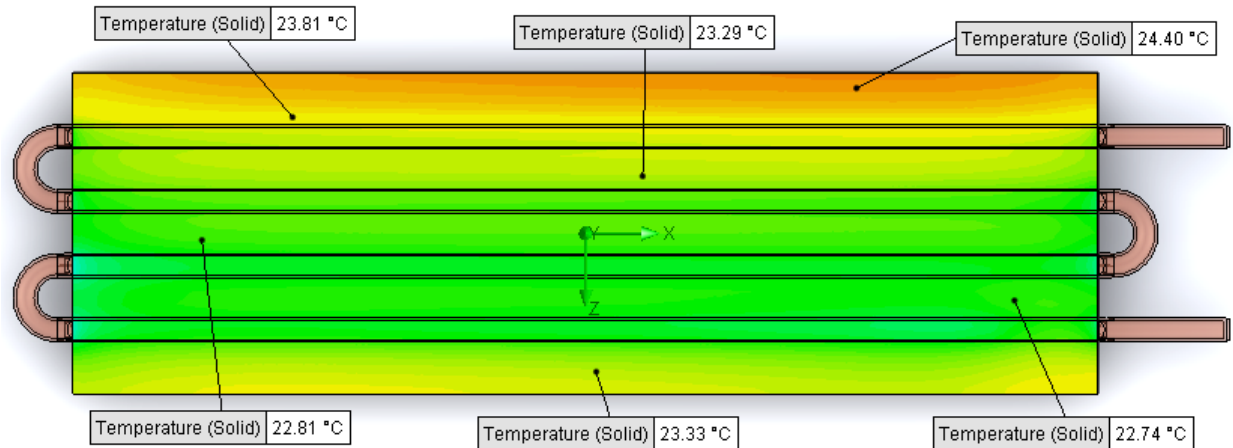
Inlet Flow: 1 gpm

Inlet Fluid Temp: 20°C

Heat Source: 500W distributed

Surface Area: 5.0" x 16.0"

Tube: 3/8 OD Copper



## Simulation Data

| Goal Name                    | Unit       | Value       |
|------------------------------|------------|-------------|
| SG Min Temperature (Solid) 1 | [°C]       | 21.16794332 |
| SG Av Temperature (Solid) 1  | [°C]       | 23.14683868 |
| SG Max Temperature (Solid) 1 | [°C]       | 24.48354839 |
| SG Av Temp-WATER OUT         | [°C]       | 21.89759507 |
| PRESSURE DROP                | [lbf/in^2] | 2.374397899 |

SG-Surface goal is a parameter on selected surface(s).  
In this case, it is the entire tube side surface area.

## RESULTS

Thermal Resistance: .0063°C/W

Pressure Drop: 2.37 psi

Min Surface Temp: 21.17°C

Max Surface Temp: 24.48°C

Water Temp Out: 21.90°C

# D6 STANDARD- HB-4P-1600-CU-C



## PARAMETERS

Fluid: Water

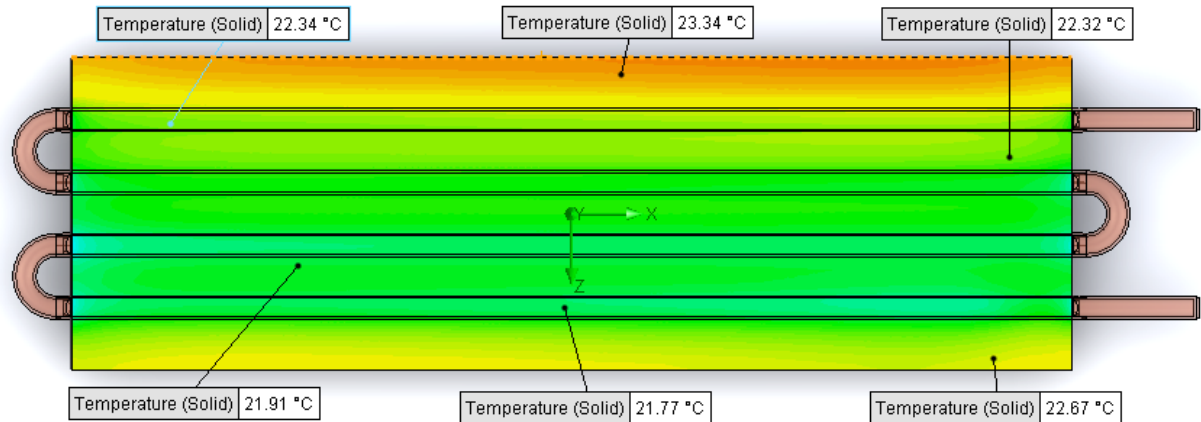
Inlet Flow: 1.5 gpm

Inlet Fluid Temp: 20°C

Heat Source: 500W distributed

Surface Area: 5.0" x 16.0"

Tube: 3/8 OD Copper



## Simulation Data

| Goal Name                    | Unit       | Value       |
|------------------------------|------------|-------------|
| SG Min Temperature (Solid) 1 | [°C]       | 20.72560379 |
| SG Av Temperature (Solid) 1  | [°C]       | 22.30240763 |
| SG Max Temperature (Solid) 1 | [°C]       | 23.48534142 |
| SG Av Temp-WATER OUT         | [°C]       | 21.27091395 |
| PRESSURE DROP                | [lbf/in^2] | 4.771055034 |

SG-Surface goal is a parameter on selected surface(s).  
In this case, it is the entire tube side surface area.

## RESULTS

Thermal Resistance: .0046°C/W

Pressure Drop: 4.77 psi

Min Surface Temp: 20.73°C

Max Surface Temp: 23.49°C

Water Temp Out: 21.27°C

# D6 STANDARD- HB-4P-1600-CU-C



## PARAMETERS

Fluid: Water

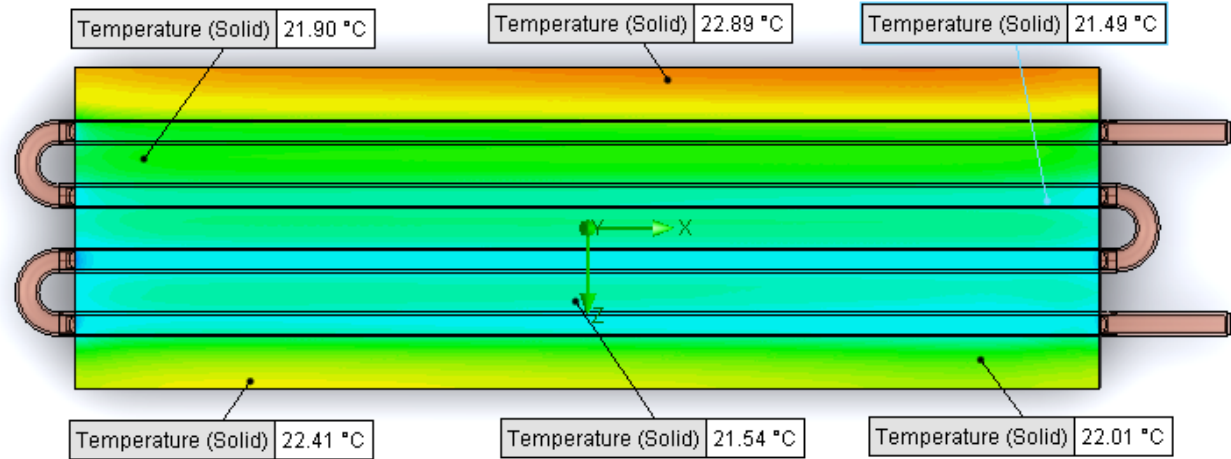
Inlet Flow: 2 gpm

Inlet Fluid Temp: 20°C

Heat Source: 500W distributed

Surface Area: 5.0" x 16.0"

Tube: 3/8 OD Copper



## Simulation Data

| Goal Name                    | Unit       | Value       |
|------------------------------|------------|-------------|
| SG Min Temperature (Solid) 1 | [°C]       | 20.52129188 |
| SG Av Temperature (Solid) 1  | [°C]       | 21.87379158 |
| SG Max Temperature (Solid) 1 | [°C]       | 22.96752944 |
| SG Av Temp-WATER OUT         | [°C]       | 20.96032002 |
| PRESSURE DROP                | [lbf/in^2] | 7.986662237 |

SG-Surface goal is a parameter on selected surface(s).  
In this case, it is the entire tube side surface area.

## RESULTS

Thermal Resistance: .0037°C/W

Pressure Drop: 7.99 psi

Min Surface Temp: 20.52°C

Max Surface Temp: 22.97°C

Water Temp Out: 20.96°C