



**D6 INDUSTRIES
STANDARD PRODUCT
HB-4P-1200-CU-C**

SIMULATION RESULTS

1-2 gpm flow rates
Distributed 500W

D6 STANDARD- HB-4P-1200-CU-C



PARAMETERS

Fluid: Water

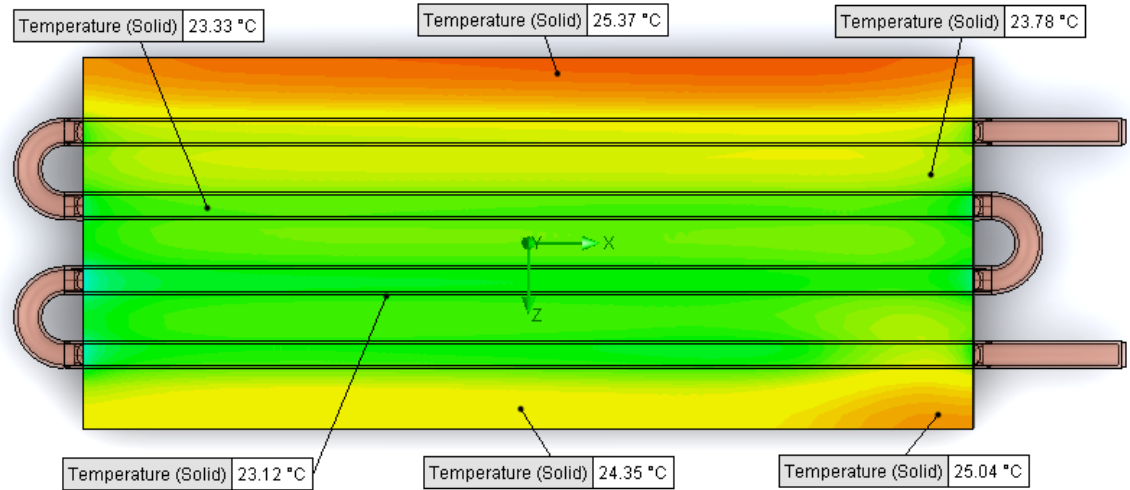
Inlet Flow: 1 gpm

Inlet Fluid Temp: 20°C

Heat Source: 500W distributed

Surface Area: 5.0" x 12.0"

Tube: 3/8 OD Copper



Simulation Data

Goal Name	Unit	Value
SG Min Temperature (Solid) 1	[°C]	21.32906272
SG Av Temperature (Solid) 1	[°C]	23.84082229
SG Max Temperature (Solid) 1	[°C]	25.50200463
SG Av Temp-WATER OUT	[°C]	21.8987342
PRESSURE DROP	[lbf/in^2]	1.852134158

SG-Surface goal is a parameter on selected surface(s).
In this case, it is the entire tube side surface area.

RESULTS

Thermal Resistance: .0077°C/W

Pressure Drop: 1.85 psi

Min Surface Temp: 21.33°C

Max Surface Temp: 25.50°C

Water Temp Out: 21.90°C

D6 STANDARD- HB-4P-1200-CU-C



PARAMETERS

Fluid: Water

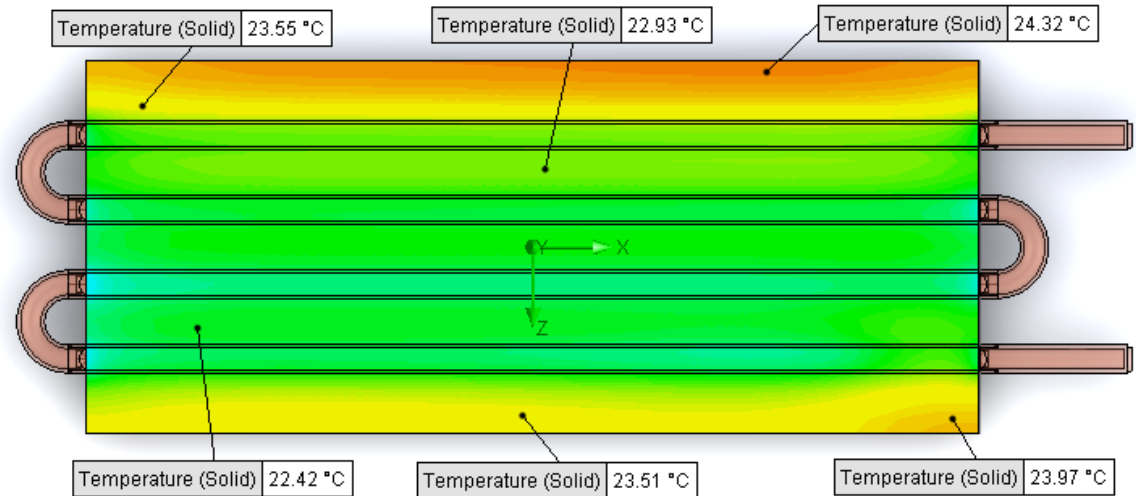
Inlet Flow: 1.5 gpm

Inlet Fluid Temp: 20°C

Heat Source: 500W distributed

Surface Area: 5.0" x 12.0"

Tube: 3/8 OD Copper



Simulation Data

Goal Name	Unit	Value
SG Min Temperature (Solid) 1	[°C]	20.82276674
SG Av Temperature (Solid) 1	[°C]	22.85796704
SG Max Temperature (Solid) 1	[°C]	24.36077092
SG Av Temp-WATER OUT	[°C]	21.27025913
PRESSURE DROP	[lbf/in ²]	3.734750812

SG-Surface goal is a parameter on selected surface(s).
In this case, it is the entire tube side surface area.

RESULTS

Thermal Resistance: .0057°C/W

Pressure Drop: 3.73 psi

Min Surface Temp: 20.82°C

Max Surface Temp: 24.36°C

Water Temp Out: 21.27°C

D6 STANDARD- HB-4P-1200-CU-C



PARAMETERS

Fluid: Water

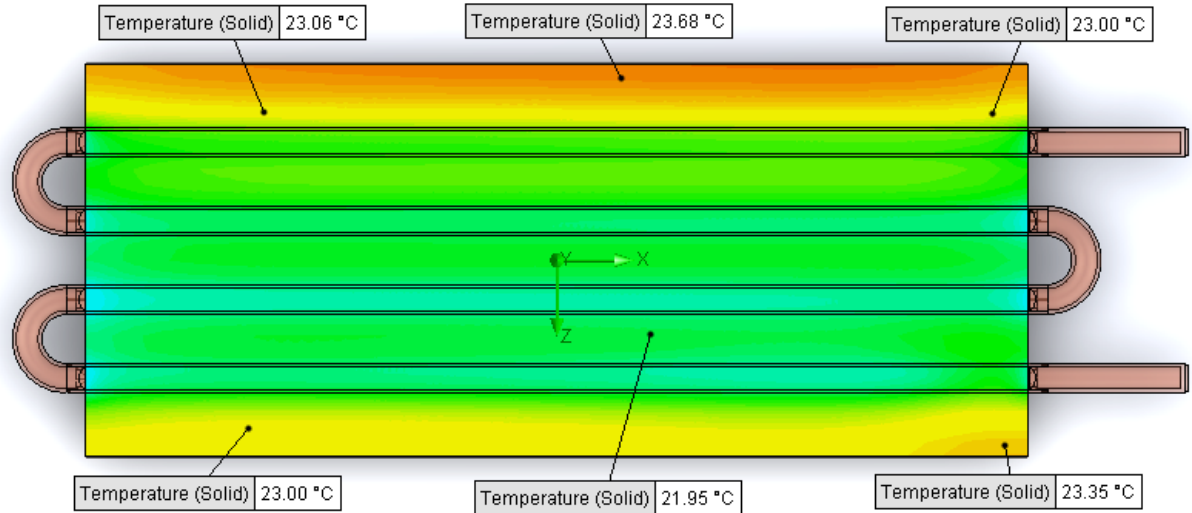
Inlet Flow: 2 gpm

Inlet Fluid Temp: 20°C

Heat Source: 500W distributed

Surface Area: 5.0" x 12.0"

Tube: 3/8 OD Copper



Simulation Data

Goal Name	Unit	Value
SG Min Temperature (Solid) 1	[°C]	20.58700586
SG Av Temperature (Solid) 1	[°C]	22.34495386
SG Max Temperature (Solid) 1	[°C]	23.75587472
SG Av Temp-WATER OUT	[°C]	20.95823488
PRESSURE DROP	[lbf/in^2]	6.243868504

SG-Surface goal is a parameter on selected surface(s).
In this case, it is the entire tube side surface area.

RESULTS

Thermal Resistance: .0047°C/W

Pressure Drop: 6.24 psi

Min Surface Temp: 20.59°C

Max Surface Temp: 23.76°C

Water Temp Out: 20.96°C