



**D6 INDUSTRIES
STANDARD PRODUCT
HB-4P-0600-CU-C**

SIMULATION RESULTS

1-2 gpm flow rates
Distributed 500W

PARAMETERS

Fluid: Water

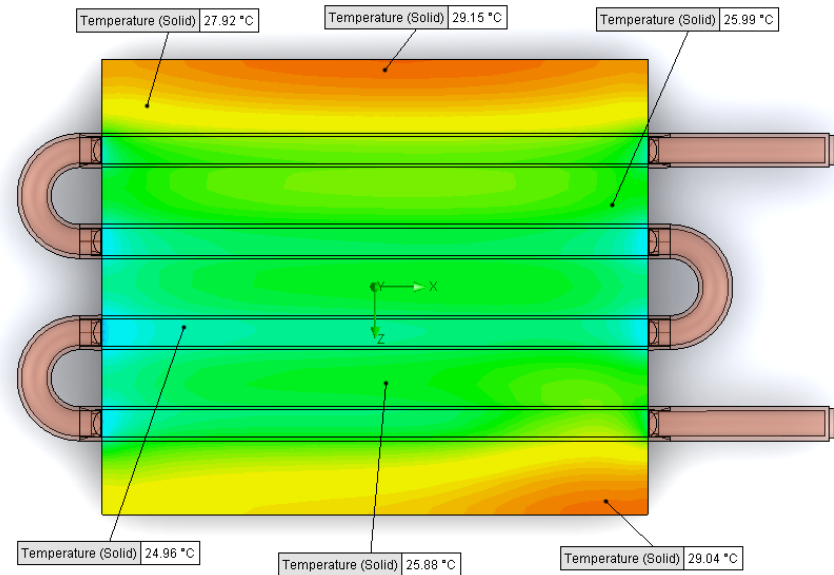
Inlet Flow: 1 gpm

Inlet Fluid Temp: 20°C

Heat Source: 500W distributed tube side

Surface Area: 5.0" x 6.0"

Tube: 3/8 OD Copper



Simulation Data

Goal Name	Unit	Value
SG Min Temperature (Solid) 1	[°C]	22.01649785
SG Av Temperature (Solid) 1	[°C]	26.56105209
SG Max Temperature (Solid) 1	[°C]	29.20194532
SG Av Temp-WATER OUT	[°C]	21.90274382
PRESSURE DROP	[lbf/in^2]	1.103798266

SG-Surface goal is a parameter on selected surface(s).
In this case, it is the entire tube side surface area.

RESULTS

Thermal Resistance: 0.0131°C/W

Pressure Drop: 1.10 psi

Min Surface Temp: 22.01°C

Max Surface Temp: 29.20°C

Water Temp Out: 21.90°C

PARAMETERS

Fluid: Water

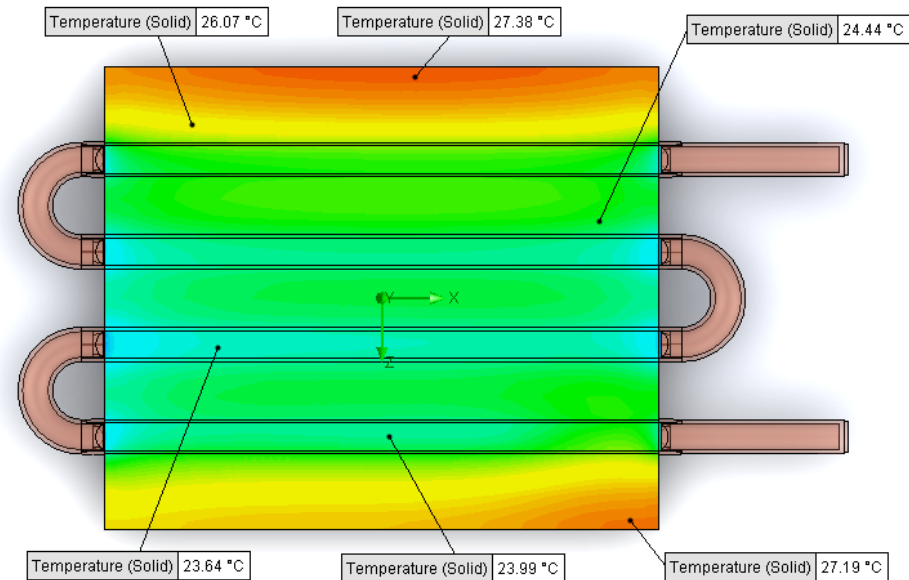
Inlet Flow: 1.5 gpm

Inlet Fluid Temp: 20°C

Heat Source: 500W distributed tube side

Surface Area: 5.0" x 6.0"

Tube: 3/8 OD Copper



Simulation Data

Goal Name	Unit	Value
SG Min Temperature (Solid) 1	[°C]	21.21786598
SG Av Temperature (Solid) 1	[°C]	24.94035703
SG Max Temperature (Solid) 1	[°C]	27.42201164
SG Av Temp-WATER OUT	[°C]	21.27089068
PRESSURE DROP	[lbf/in^2]	2.294594327

SG-Surface goal is a parameter on selected surface(s).
In this case, it is the entire tube side surface area.

RESULTS

Thermal Resistance: .0099°C/W

Pressure Drop: 2.29 psi

Min Surface Temp: 21.21°C

Max Surface Temp: 27.42°C

Water Temp Out: 21.27°C

PARAMETERS

Fluid: Water

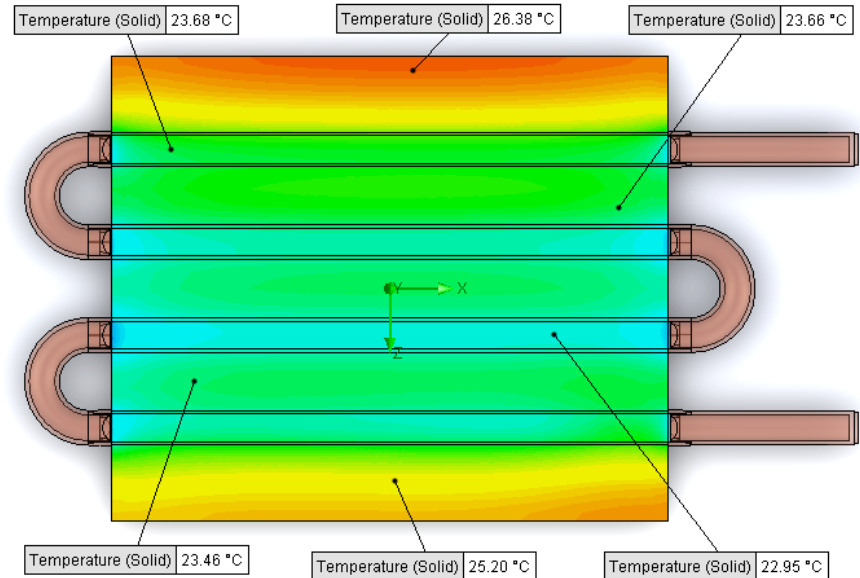
Inlet Flow: 2 gpm

Inlet Fluid Temp: 20°C

Heat Source: 500W distributed tube side

Surface Area: 5.0" x 6.0"

Tube: 3/8 OD Copper



Simulation Data

Goal Name	Unit	Value
SG Min Temperature (Solid) 1	[°C]	20.84463952
SG Av Temperature (Solid) 1	[°C]	24.08583341
SG Max Temperature (Solid) 1	[°C]	26.47143801
SG Av Temp-WATER OUT	[°C]	20.95644294
PRESSURE DROP	[lbf/in^2]	3.886379579

SG-Surface goal is a parameter on selected surface(s).
In this case, it is the entire tube side surface area.

RESULTS

Thermal Resistance: .0082°C/W

Pressure Drop: 3.89 psi

Min Surface Temp: 20.84°C

Max Surface Temp: 26.47°C

Water Temp Out: 20.96°C