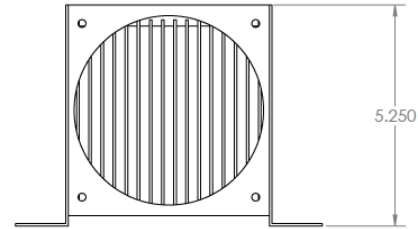
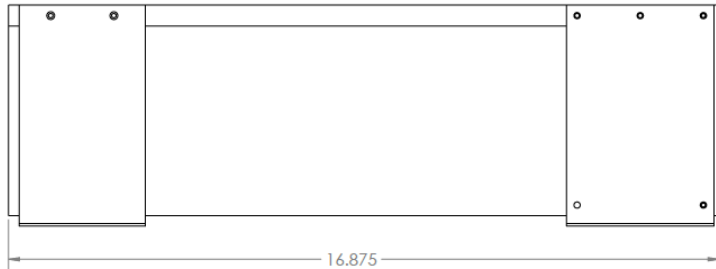
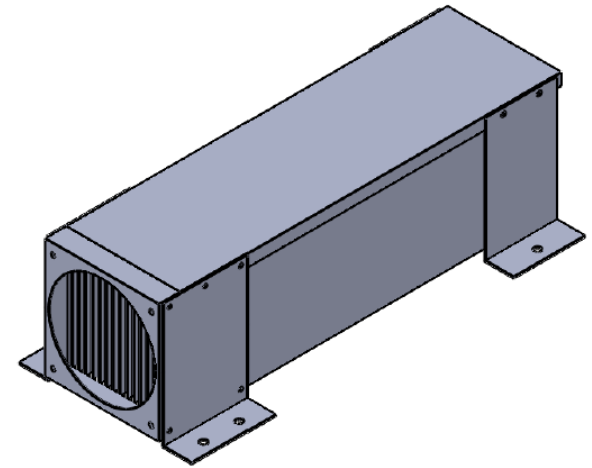
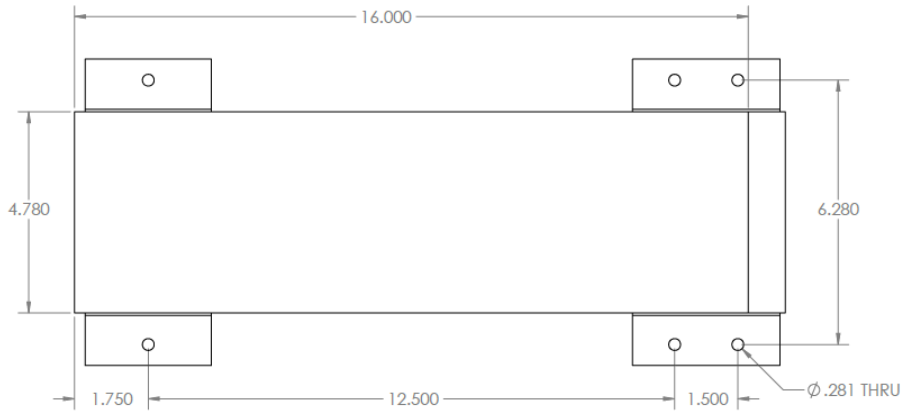




D6 INDUSTRIES
Air Cooled Heatsink
SW5-1600
78 CFM
1000W Distributed

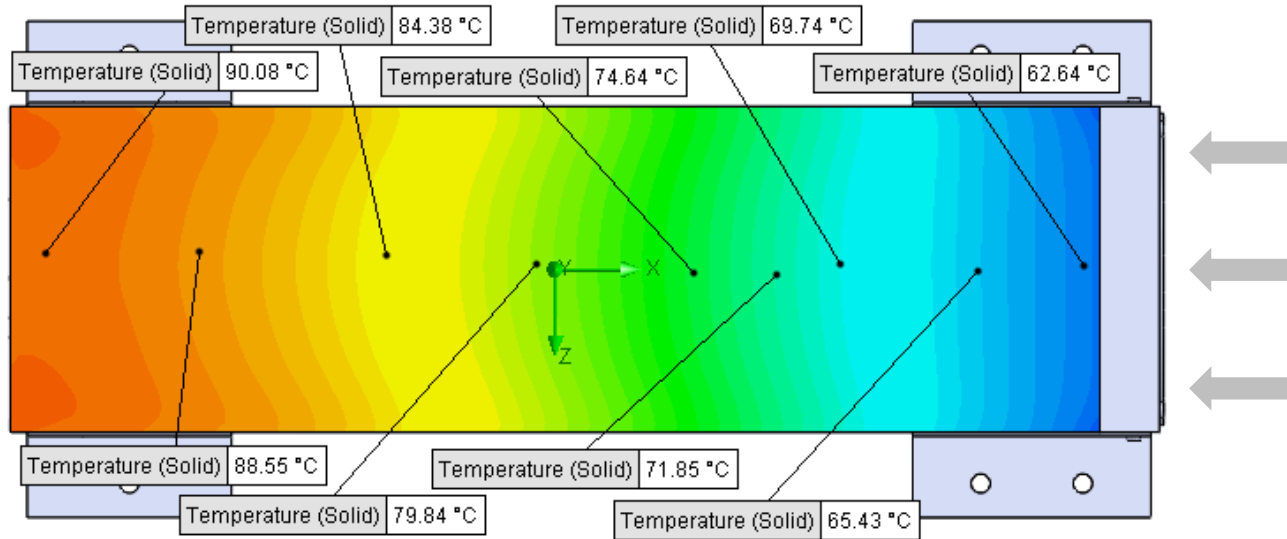


PARAMETERS

Inlet Flow: 78 CFM

Ambient Air Temp in: 20°C

Heat Source: 1000W distributed



Simulation Data

Goal Name	Unit	Value
SG Min Temperature (Solid) 1	[°C]	60.88475549
SG Av Temperature (Solid) 1	[°C]	78.59213634
SG Max Temperature (Solid) 1	[°C]	90.53926137

SG-Surface goal is a parameter on selected surface(s).

RESULTS

Thermal Resistance: 0.0585°C/W

Min Surface Temp: 60.88°C

Max Surface Temp: 90.53°C