



**D6 INDUSTRIES
STANDARD PRODUCT
HB-2P-0450-CU-C**

SIMULATION RESULTS

1-2 gpm flow rates
Distributed 100W

D6 STANDARD- HB-2P-0450-CU-C



PARAMETERS

Fluid: Water

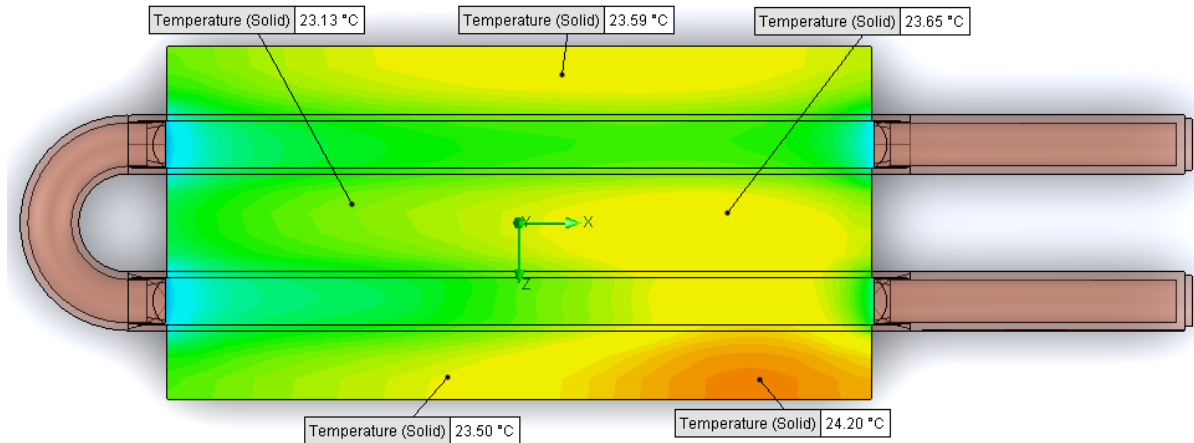
Inlet Flow: 1 gpm

Inlet Fluid Temp: 20°C

Heat Source: 100W distributed

Surface Area: 2.25" x 4.50"

Tube: 3/8 OD Copper



Simulation Data

Goal Name	Unit	Value
SG Min Temperature (Solid) 1	[°C]	20.93044804
SG Av Temperature (Solid) 1	[°C]	23.23099984
SG Max Temperature (Solid) 1	[°C]	24.26949815
WATER OUT	[°C]	20.43007111
PRESSURE DROP	[lbf/in^2]	0.489008964

SG-Surface goal is a parameter on selected surface(s).
In this case, it is the entire tube side surface area.

RESULTS

Thermal Resistance: 0.0323°C/W

Pressure Drop: 0.48psi

Min Surface Temp: 20.93°C

Max Surface Temp: 24.26°C

Water Temp Out: 20.43°C

D6 STANDARD- HB-2P-0450-CU-C



PARAMETERS

Fluid: Water

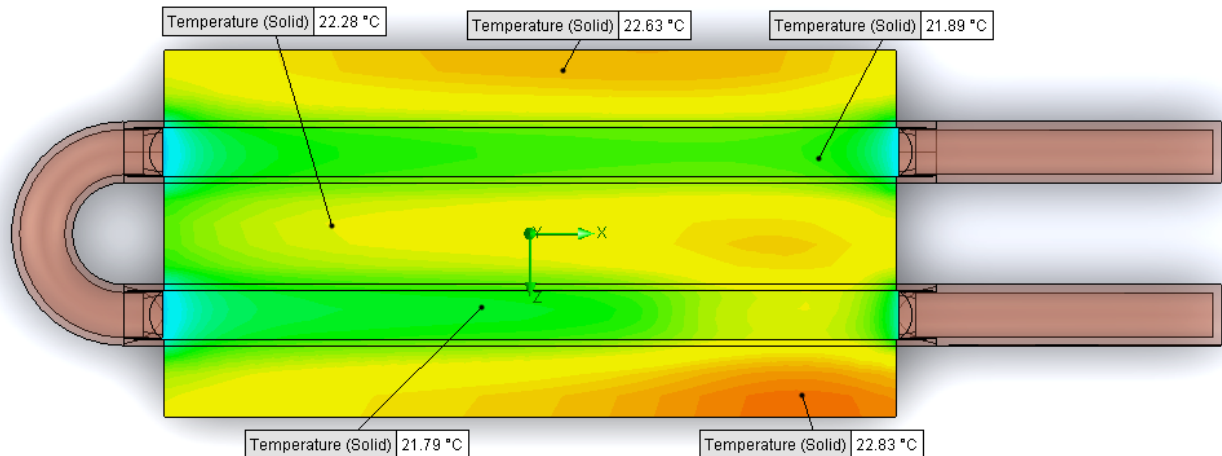
Inlet Flow: 1.5 gpm

Inlet Fluid Temp: 20°C

Heat Source: 100W distributed

Surface Area: 2.25" x 4.50"

Tube: 3/8 OD Copper



Simulation Data

Goal Name	Unit	Value
SG Min Temperature (Solid) 1	[°C]	20.53484588
SG Av Temperature (Solid) 1	[°C]	22.23131255
SG Max Temperature (Solid) 1	[°C]	22.90632687
WATER OUT	[°C]	20.25732098
PRESSURE DROP	[lbf/in^2]	1.010229596

SG-Surface goal is a parameter on selected surface(s).
In this case, it is the entire tube side surface area.

RESULTS

Thermal Resistance: 0.0223°C/W

Pressure Drop: 1.01psi

Min Surface Temp: 20.53°C

Max Surface Temp: 22.90°C

Water Temp Out: 20.25°C

D6 STANDARD- HB-2P-0450-CU-C



PARAMETERS

Fluid: Water

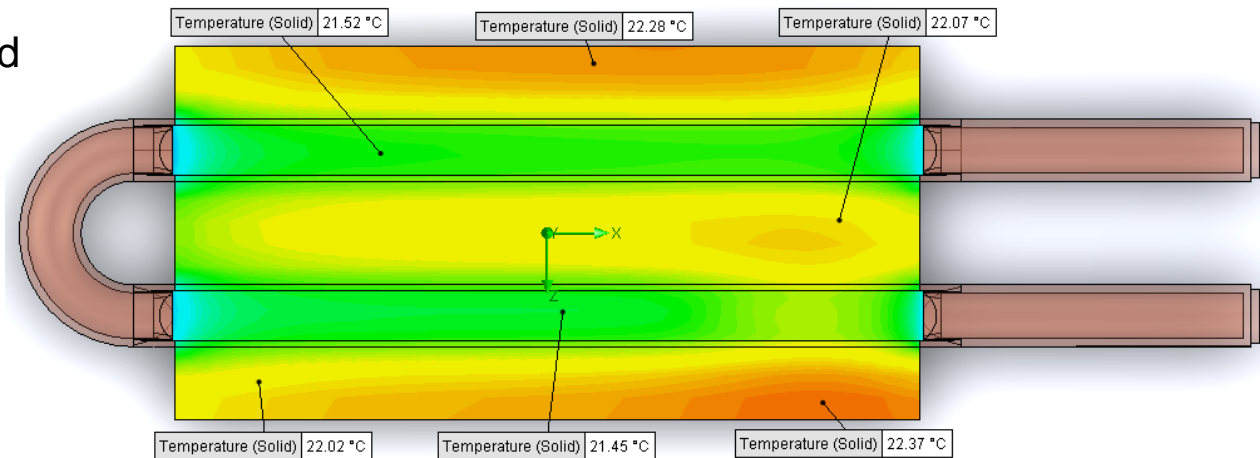
Inlet Flow: 2 gpm

Inlet Fluid Temp: 20°C

Heat Source: 100W distributed

Surface Area: 2.25" x 4.50"

Tube: 3/8 OD Copper



Simulation Data

Goal Name	Unit	Value
SG Min Temperature (Solid) 1	[°C]	20.43175353
SG Av Temperature (Solid) 1	[°C]	21.87390079
SG Max Temperature (Solid) 1	[°C]	22.44205548
WATER OUT	[°C]	20.24429887
PRESSURE DROP	[lbf/in^2]	1.702991822

SG-Surface goal is a parameter on selected surface(s).
In this case, it is the entire tube side surface area.

RESULTS

Thermal Resistance: 0.0187°C/W

Pressure Drop: 1.70psi

Min Surface Temp: 20.43°C

Max Surface Temp: 22.44°C

Water Temp Out: 20.24°C