



D6 INDUSTRIES
STANDARD PRODUCT
HT-TAP2000-5
SIMULATION RESULTS

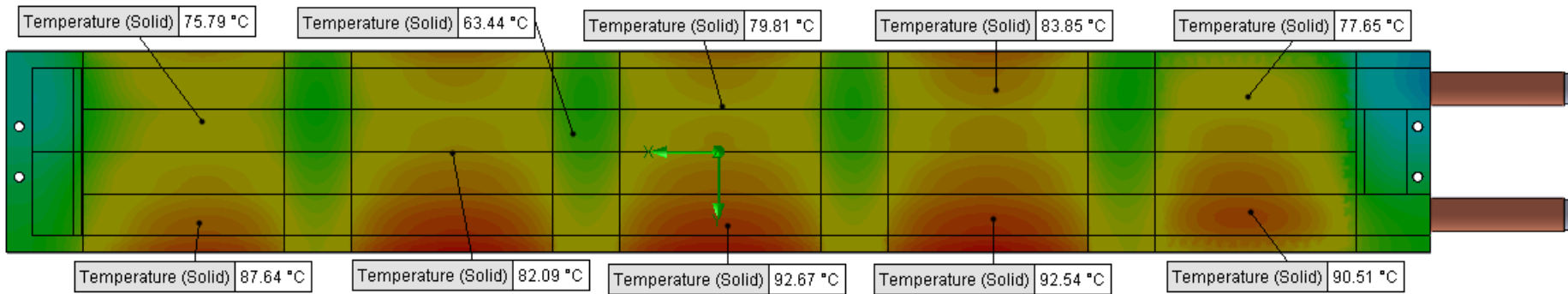
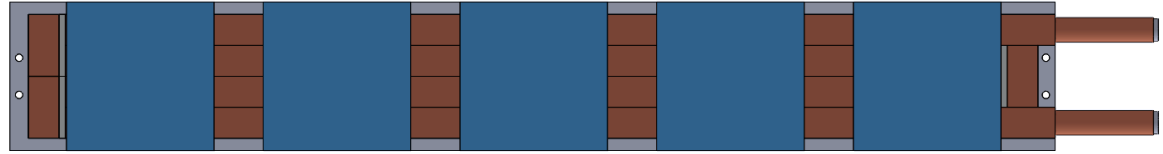
1-3 gpm flow rates
5X 2000W Heat Load

D6 STANDARD HT-TAP2000-5



PARAMETERS

Fluid: Water
 Inlet Flow: 1 gpm
 Inlet Fluid Temp: 20°C
 Heat Source: 5 blue squares=10,000W
 Tube: ½ OD round copper inlet/outlet



Simulation Data

Goal Name	Unit	Value
SG Min Temperature (Solid) 1	[°C]	33.70302295
SG Av Temperature (Solid) 1	[°C]	75.03252882
SG Max Temperature (Solid) 1	[°C]	97.25232579
FLUID OUT	[°C]	57.71020408
PRESSURE DROP	[lbf/in ²]	1.456701489

RESULTS

Thermal Resistance: 0.0055°C/W
 Pressure Drop: 1.45psi
 Min Surface Temp: 33.70°C
 Max Surface Temp: 97.25°C
 Water Temp Out: 57.71°C

SG-Surface goal is a parameter on selected surface(s).
 In this case, it is the entire tube side surface area.

D6 STANDARD HT-TAP2000-5



PARAMETERS

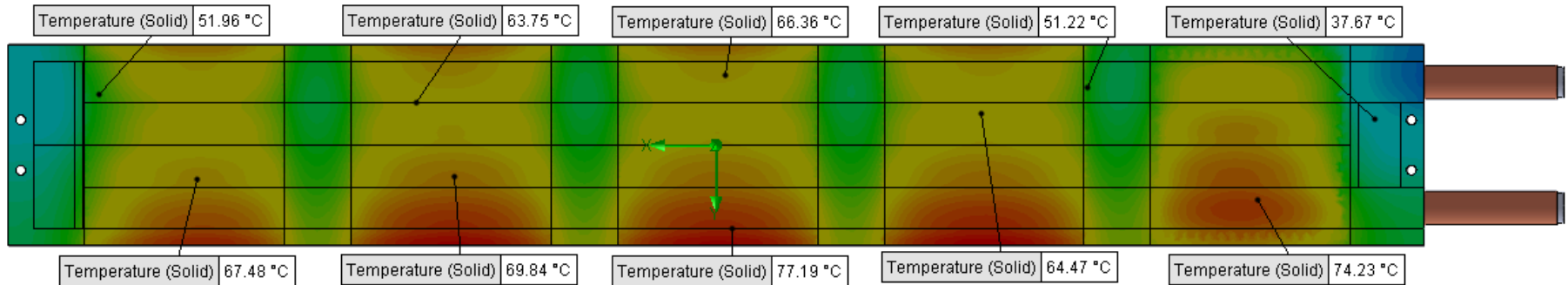
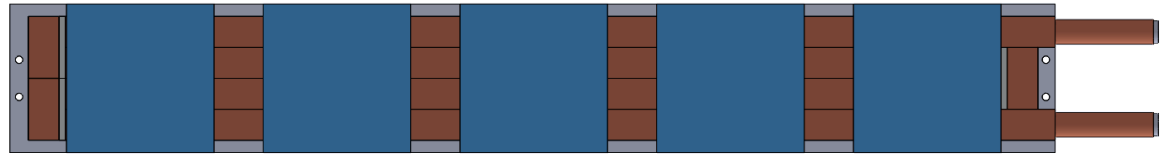
Fluid: Water

Inlet Flow: 1.5 gpm

Inlet Fluid Temp: 20°C

Heat Source: 5 blue squares=10,000W

Tube: ½ OD round copper inlet/outlet



Simulation Data

Goal Name	Unit	Value
SG Min Temperature (Solid) 1	[°C]	28.37876332
SG Av Temperature (Solid) 1	[°C]	60.5654523
SG Max Temperature (Solid) 1	[°C]	80.19506234
FLUID OUT	[°C]	45.19563038
PRESSURE DROP	[lbf/in ²]	3.244341748

SG-Surface goal is a parameter on selected surface(s).
In this case, it is the entire tube side surface area.

RESULTS

Thermal Resistance: 0.0040°C/W

Pressure Drop: 3.24psi

Min Surface Temp: 28.37°C

Max Surface Temp: 80.19°C

Water Temp Out: 45.19°C

D6 STANDARD HT-TAP2000-5



PARAMETERS

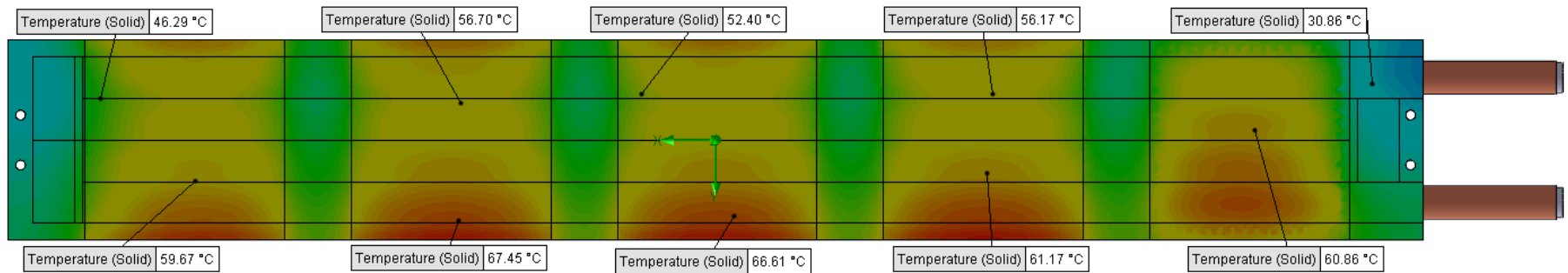
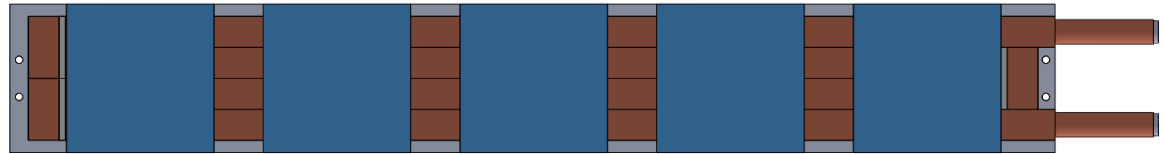
Fluid: Water

Inlet Flow: 2 gpm

Inlet Fluid Temp: 20°C

Heat Source: 5 blue squares=10,000W

Tube: ½ OD round copper inlet/outlet



Simulation Data

Goal Name	Unit	Value
SG Min Temperature (Solid) 1	[°C]	25.83370372
SG Av Temperature (Solid) 1	[°C]	53.11368911
SG Max Temperature (Solid) 1	[°C]	70.91716367
FLUID OUT	[°C]	38.91810883
PRESSURE DROP	[lbf/in ²]	5.728868436

RESULTS

Thermal Resistance: 0.0033°C/W

Pressure Drop: 5.72psi

Min Surface Temp: 25.83°C

Max Surface Temp: 70.91°C

Water Temp Out: 38.91°C

SG-Surface goal is a parameter on selected surface(s).
In this case, it is the entire tube side surface area.

D6 STANDARD HT-TAP2000-5



PARAMETERS

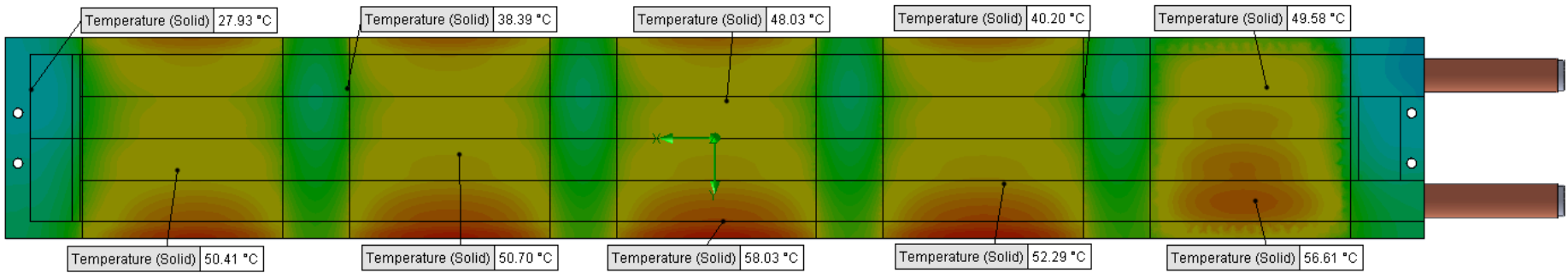
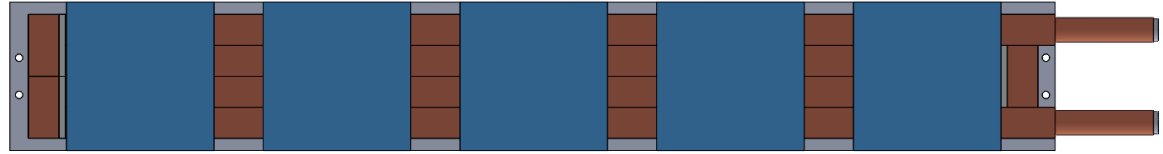
Fluid: Water

Inlet Flow: 3 gpm

Inlet Fluid Temp: 20°C

Heat Source: 5 blue squares=10,000W

Tube: ½ OD round copper inlet/outlet



Simulation Data

Goal Name	Unit	Value
SG Min Temperature (Solid) 1	[°C]	23.24818217
SG Av Temperature (Solid) 1	[°C]	45.21080187
SG Max Temperature (Solid) 1	[°C]	60.88744575
FLUID OUT	[°C]	32.63622941
PRESSURE DROP	[lbf/in ²]	12.82556299

SG-Surface goal is a parameter on selected surface(s).
In this case, it is the entire tube side surface area.

RESULTS

Thermal Resistance: 0.0025°C/W

Pressure Drop: 12.82psi

Min Surface Temp: 23.24°C

Max Surface Temp: 60.88°C

Water Temp Out: 32.63°C