



D6 INDUSTRIES
STANDARD PRODUCT
HT-TAP2000-4
SIMULATION RESULTS

1-3 gpm flow rates
4X 2000W Heat Load

D6 STANDARD HT-TAP2000-4



PARAMETERS

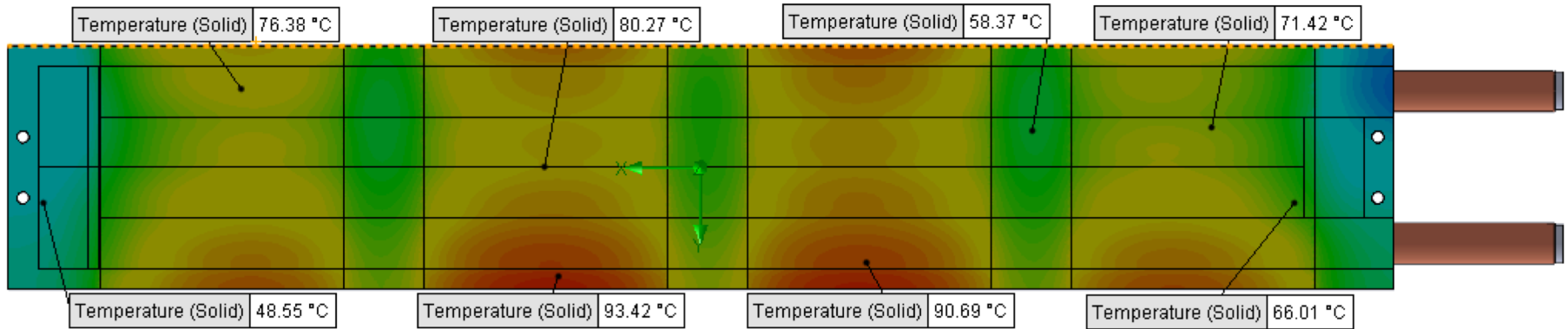
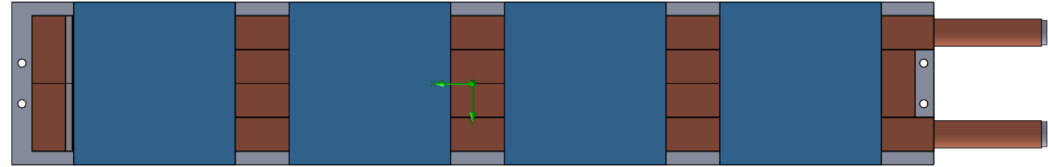
Fluid: Water

Inlet Flow: 1 gpm

Inlet Fluid Temp: 20°C

Heat Source: 4 blue squares=8000W

Tube: ½ OD round copper inlet/outlet



Simulation Data

Goal Name	Unit	Value
SG Min Temperature (Solid) 1	[°C]	34.57936543
SG Av Temperature (Solid) 1	[°C]	72.13525435
SG Max Temperature (Solid) 1	[°C]	94.38166242
FLUID OUT	[°C]	50.29587038
PRESSURE DROP	[lbf/in ²]	1.351501445

SG-Surface goal is a parameter on selected surface(s).
In this case, it is the entire tube side surface area.

RESULTS

Thermal Resistance: 0.0065°C/W

Pressure Drop: 1.35psi

Min Surface Temp: 34.57°C

Max Surface Temp: 94.38°C

Water Temp Out: 50.29°C

D6 STANDARD HT-TAP2000-4



PARAMETERS

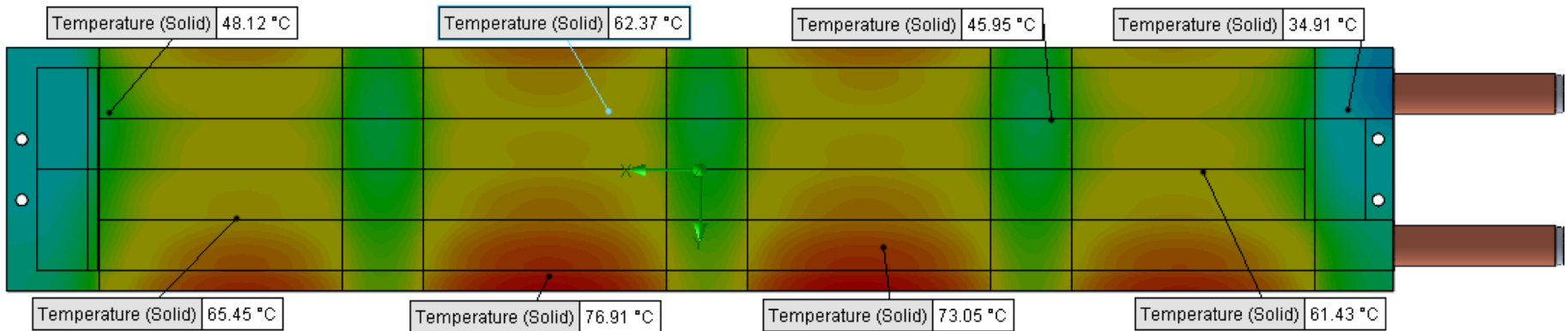
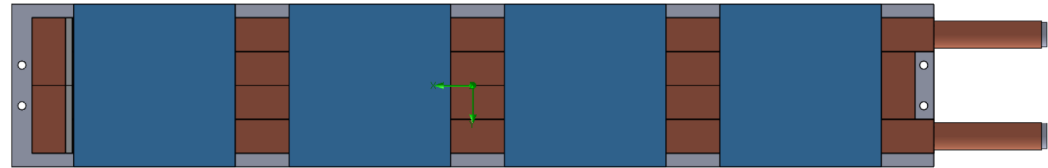
Fluid: Water

Inlet Flow: 1.5 gpm

Inlet Fluid Temp: 20°C

Heat Source: 4 blue squares=8000W

Tube: ½ OD round copper inlet/outlet



Simulation Data

Goal Name	Unit	Value
SG Min Temperature (Solid) 1	[°C]	29.3290304
SG Av Temperature (Solid) 1	[°C]	58.57224163
SG Max Temperature (Solid) 1	[°C]	78.49136022
FLUID OUT	[°C]	40.17990973
PRESSURE DROP	[lbf/in ²]	3.014138106

SG-Surface goal is a parameter on selected surface(s).
In this case, it is the entire tube side surface area.

RESULTS

Thermal Resistance: 0.0048°C/W

Pressure Drop: 3.01psi

Min Surface Temp: 29.32°C

Max Surface Temp: 78.49°C

Water Temp Out: 40.17°C

D6 STANDARD HT-TAP2000-4



PARAMETERS

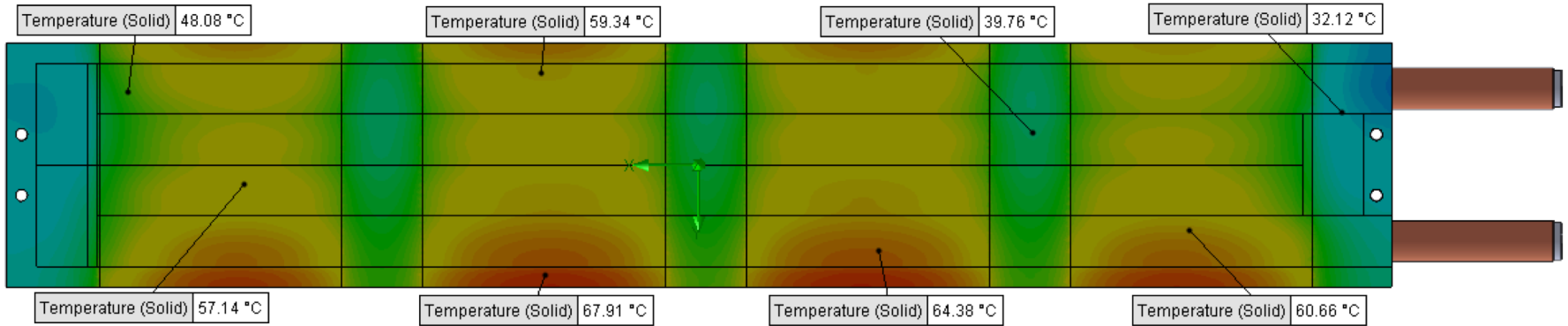
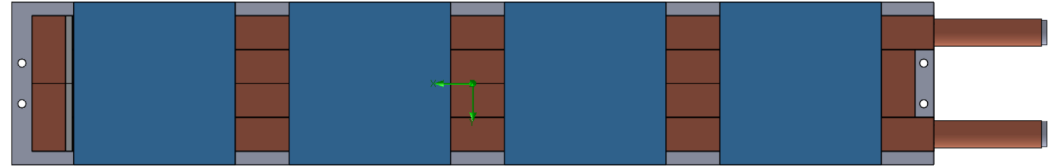
Fluid: Water

Inlet Flow: 2 gpm

Inlet Fluid Temp: 20°C

Heat Source: 4 blue squares=8000W

Tube: ½ OD round copper inlet/outlet



Simulation Data

Goal Name	Unit	Value
SG Min Temperature (Solid) 1	[°C]	26.64684029
SG Av Temperature (Solid) 1	[°C]	51.67375767
SG Max Temperature (Solid) 1	[°C]	68.7775367
FLUID OUT	[°C]	35.12859078
PRESSURE DROP	[lbf/in ²]	5.341838021

RESULTS

Thermal Resistance: 0.0039°C/W

Pressure Drop: 5.34psi

Min Surface Temp: 26.64°C

Max Surface Temp: 68.77°C

Water Temp Out: 35.12°C

SG-Surface goal is a parameter on selected surface(s).
In this case, it is the entire tube side surface area.

D6 STANDARD HT-TAP2000-4



PARAMETERS

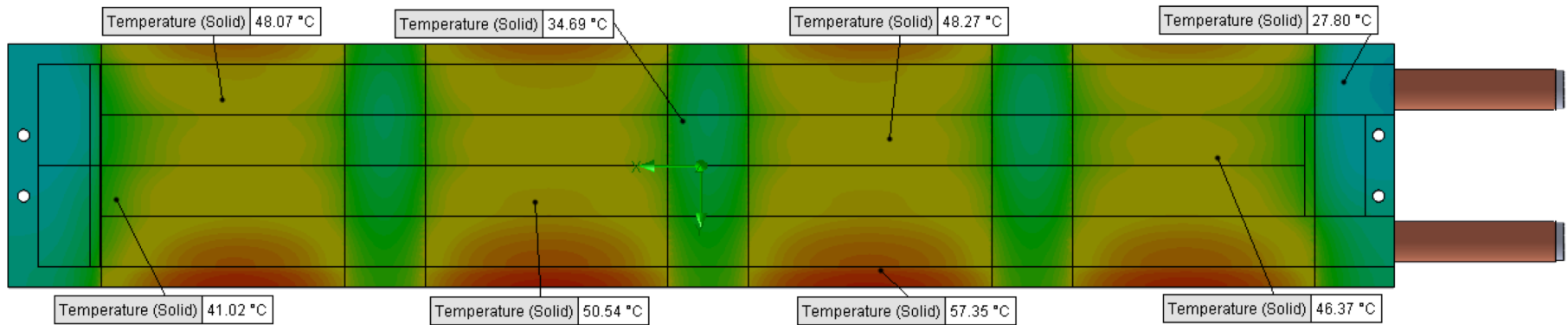
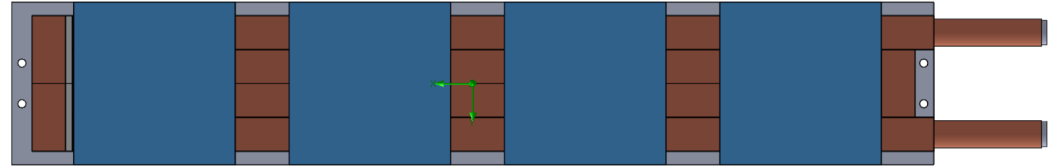
Fluid: Water

Inlet Flow: 3 gpm

Inlet Fluid Temp: 20°C

Heat Source: 4 blue squares=8000W

Tube: ½ OD round copper inlet/outlet



Simulation Data

Goal Name	Unit	Value
SG Min Temperature (Solid) 1	[°C]	23.92570792
SG Av Temperature (Solid) 1	[°C]	44.15303957
SG Max Temperature (Solid) 1	[°C]	59.54781235
FLUID OUT	[°C]	30.12963208
PRESSURE DROP	[lbf/in ²]	12.02017449

RESULTS

Thermal Resistance: 0.0030°C/W

Pressure Drop: 12.02psi

Min Surface Temp: 23.92°C

Max Surface Temp: 59.54°C

Water Temp Out: 30.12°C

SG-Surface goal is a parameter on selected surface(s).
In this case, it is the entire tube side surface area.