



D6 INDUSTRIES
STANDARD PRODUCT
HT-TAP2000-2
SIMULATION RESULTS

1-3 gpm flow rates
2X 2000W Heat Load

D6 STANDARD HT-TAP2000-2



PARAMETERS

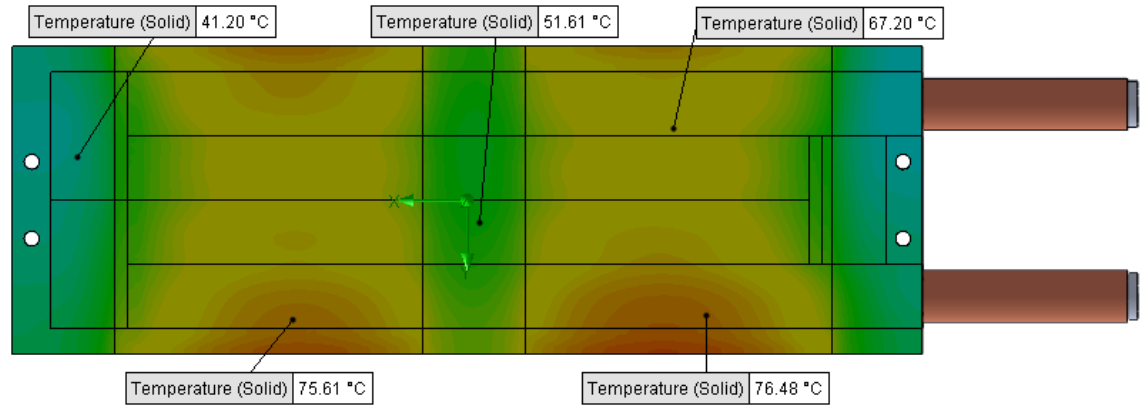
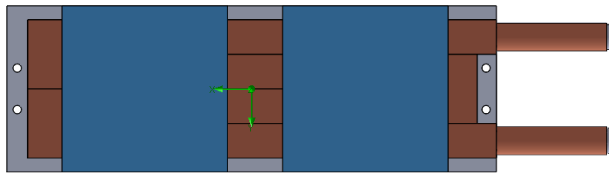
Fluid: Water

Inlet Flow: 1 gpm

Inlet Fluid Temp: 20°C

Heat Source: 2 blue squares=4000W

Tube: 1/2 OD round copper inlet/outlet



Simulation Data

Goal Name	Unit	Value
SG Min Temperature (Solid) 1	[°C]	33.87895825
SG Av Temperature (Solid) 1	[°C]	60.8743592
SG Max Temperature (Solid) 1	[°C]	80.70508333
FLUID OUT	[°C]	35.16494152
PRESSURE DROP	[lbf/in ²]	1.270038218

SG-Surface goal is a parameter on selected surface(s).
In this case, it is the entire tube side surface area.

RESULTS

Thermal Resistance: 0.0102°C/W

Pressure Drop: 1.27psi

Min Surface Temp: 33.87°C

Max Surface Temp: 80.70°C

Water Temp Out: 35.16°C

D6 STANDARD HT-TAP2000-2



PARAMETERS

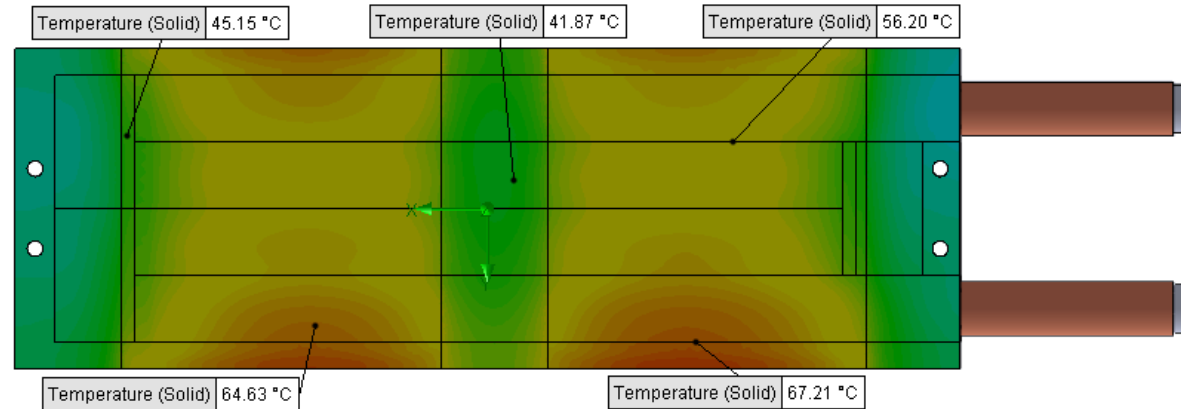
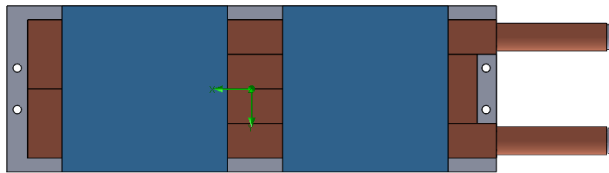
Fluid: Water

Inlet Flow: 1.5 gpm

Inlet Fluid Temp: 20°C

Heat Source: 2 blue squares=4000W

Tube: ½ OD round copper inlet/outlet



Simulation Data

Goal Name	Unit	Value
SG Min Temperature (Solid) 1	[°C]	29.02188143
SG Av Temperature (Solid) 1	[°C]	51.51100045
SG Max Temperature (Solid) 1	[°C]	69.41228602
FLUID OUT	[°C]	30.11405697
PRESSURE DROP	[lbf/in^2]	2.847797954

SG-Surface goal is a parameter on selected surface(s).
In this case, it is the entire tube side surface area.

RESULTS

Thermal Resistance: 0.0078°C/W

Pressure Drop: 2.84psi

Min Surface Temp: 29.02°C

Max Surface Temp: 69.41°C

Water Temp Out: 30.11°C

D6 STANDARD HT-TAP2000-2



PARAMETERS

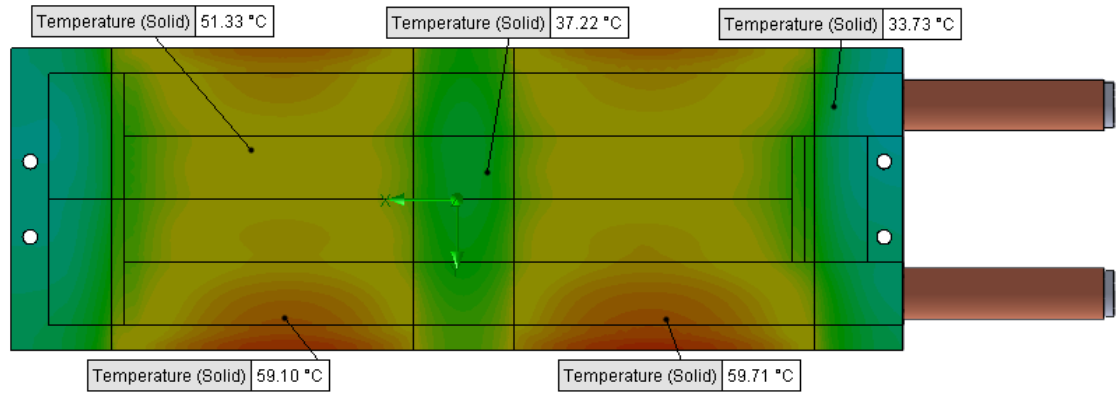
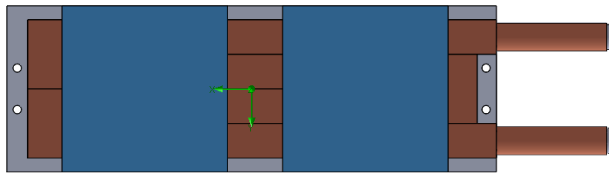
Fluid: Water

Inlet Flow: 2 gpm

Inlet Fluid Temp: 20°C

Heat Source: 2 blue squares=4000W

Tube: 1/2 OD round copper inlet/outlet



Simulation Data

Goal Name	Unit	Value
SG Min Temperature (Solid) 1	[°C]	26.43382493
SG Av Temperature (Solid) 1	[°C]	46.29359202
SG Max Temperature (Solid) 1	[°C]	62.7661824
FLUID OUT	[°C]	27.59692624
PRESSURE DROP	[lbf/in^2]	5.054287104

SG-Surface goal is a parameter on selected surface(s).
In this case, it is the entire tube side surface area.

RESULTS

Thermal Resistance: 0.0065°C/W

Pressure Drop: 5.05psi

Min Surface Temp: 26.43°C

Max Surface Temp: 62.76°C

Water Temp Out: 27.59°C

D6 STANDARD HT-TAP2000-2



PARAMETERS

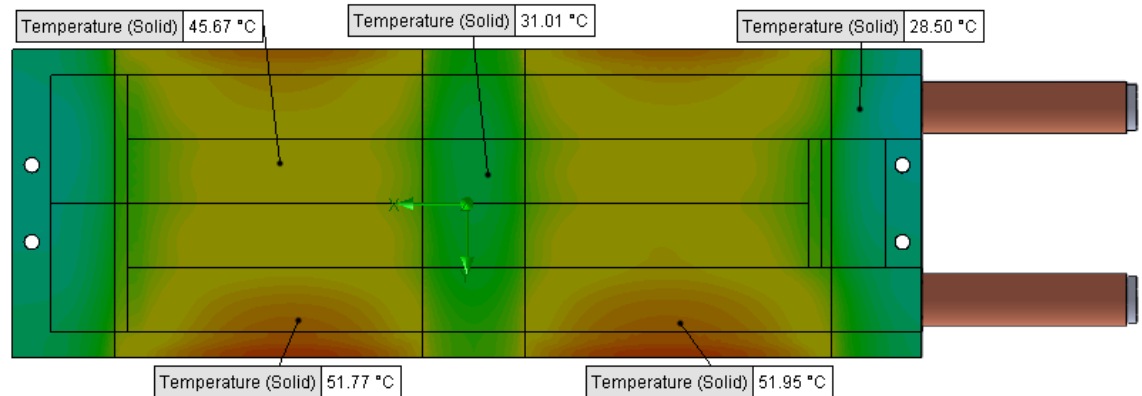
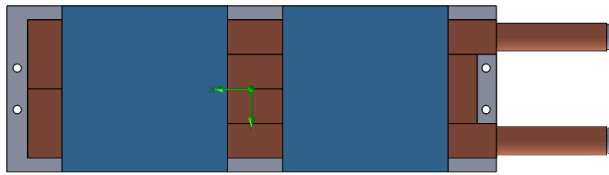
Fluid: Water

Inlet Flow: 3 gpm

Inlet Fluid Temp: 20°C

Heat Source: 2 blue squares=4000W

Tube: ½ OD round copper inlet/outlet



Simulation Data

Goal Name	Unit	Value
SG Min Temperature (Solid) 1	[°C]	23.82173474
SG Av Temperature (Solid) 1	[°C]	40.68845641
SG Max Temperature (Solid) 1	[°C]	55.57565151
FLUID OUT	[°C]	25.06451669
PRESSURE DROP	[lbf/in ²]	11.37421382

RESULTS

Thermal Resistance: 0.0051°C/W

Pressure Drop: 11.37psi

Min Surface Temp: 23.82°C

Max Surface Temp: 55.57°C

Water Temp Out: 25.06°C

SG-Surface goal is a parameter on selected surface(s).
In this case, it is the entire tube side surface area.