



D6 INDUSTRIES
STANDARD PRODUCT
HT-6P-1600
SIMULATION RESULTS

1-3 gpm flow rates
Distributed 1000W Heat Load

D6 STANDARD- HT-6P-1600



PARAMETERS

Fluid: Water

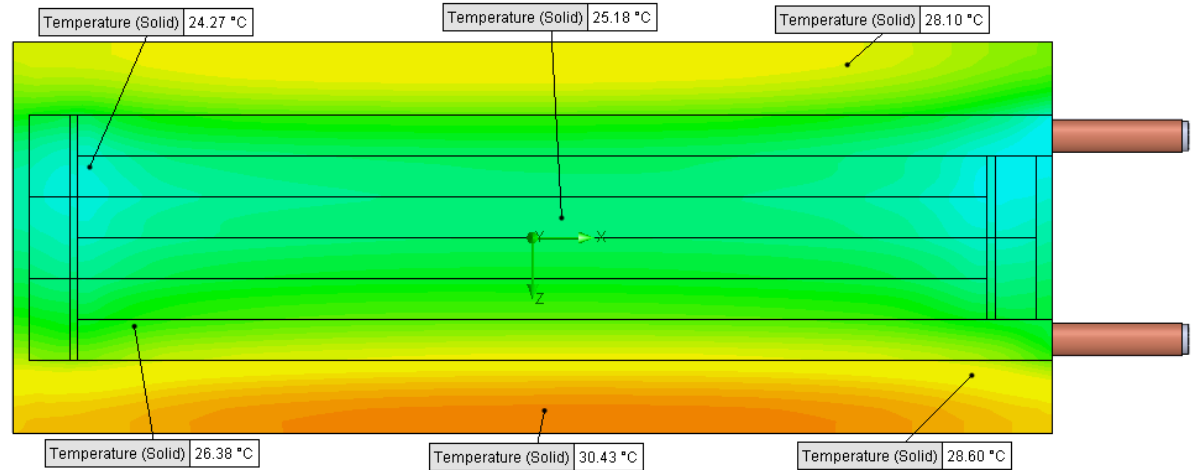
Inlet Flow: 1 gpm

Inlet Fluid Temp: 20°C

Heat Source: 1000W distributed

Surface Area: 6.0" x 16.0"

Tube: 5/8 Square copper with
1/2 OD round copper inlet/outlet



Simulation Data

Goal Name	Unit	Value
SG Min Temperature (Solid) 1	[°C]	23.28942679
SG Av Temperature (Solid) 1	[°C]	26.77653269
SG Max Temperature (Solid) 1	[°C]	30.63517157
SG FLUID OUT	[°C]	23.78258434
PRESSURE DROP	[lbf/in^2]	2.199473172

SG-Surface goal is a parameter on selected surface(s).
In this case, it is the entire tube side surface area.

RESULTS

Thermal Resistance: 0.0067°C/W

Pressure Drop: 2.19psi

Min Surface Temp: 23.28°C

Max Surface Temp: 30.63°C

Water Temp Out: 23.78°C

D6 STANDARD- HT-6P-1600



PARAMETERS

Fluid: Water

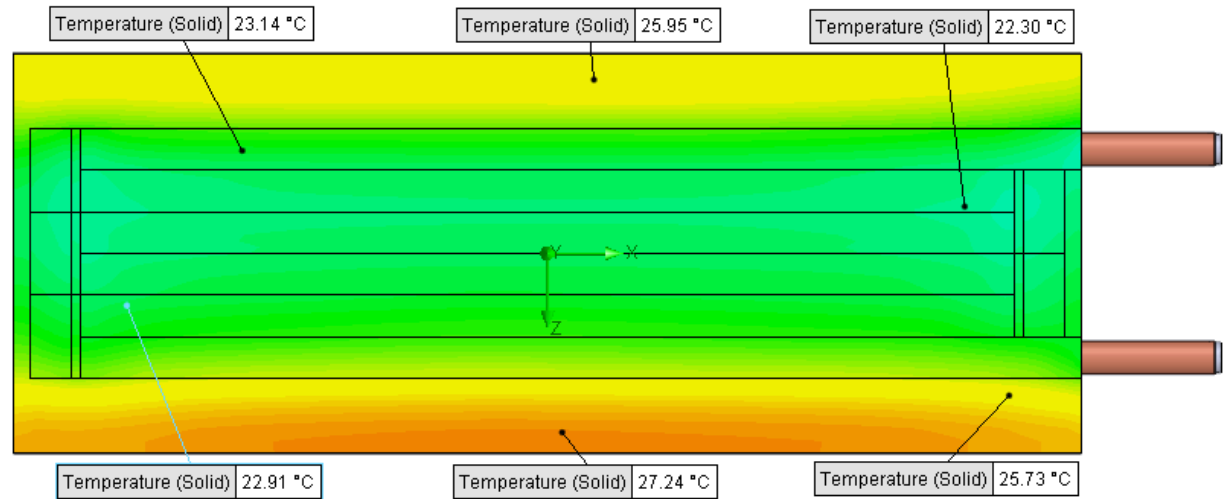
Inlet Flow: 2 gpm

Inlet Fluid Temp: 20°C

Heat Source: 1000W distributed

Surface Area: 6.0" x 16.0"

Tube: 5/8 Square copper with
1/2 OD round copper inlet/outlet



Simulation Data

Goal Name	Unit	Value
SG Min Temperature (Solid) 1	[°C]	21.96791247
SG Av Temperature (Solid) 1	[°C]	24.16647972
SG Max Temperature (Solid) 1	[°C]	27.4376471
SG FLUID OUT	[°C]	21.90552128
PRESSURE DROP	[lbf/in ²]	8.496319228

SG-Surface goal is a parameter on selected surface(s).
In this case, it is the entire tube side surface area.

RESULTS

Thermal Resistance: 0.0041°C/W

Pressure Drop: 8.49psi

Min Surface Temp: 21.96°C

Max Surface Temp: 27.43°C

Water Temp Out: 21.90°C

D6 STANDARD- HT-6P-1600



PARAMETERS

Fluid: Water

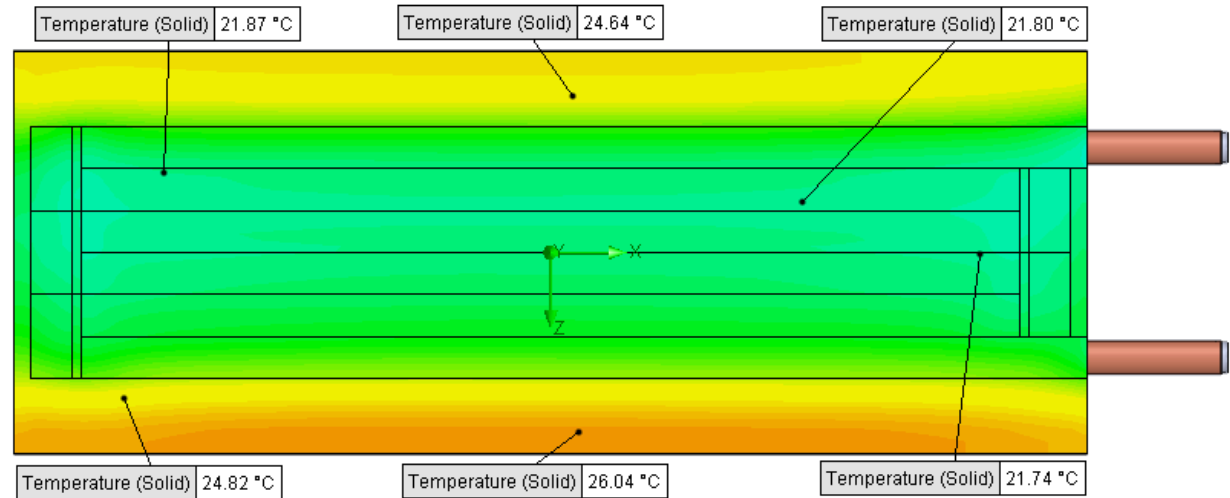
Inlet Flow: 3 gpm

Inlet Fluid Temp: 20°C

Heat Source: 1000W distributed

Surface Area: 6.0" x 16.0"

Tube: 5/8 Square copper with
1/2 OD round copper inlet/outlet



Simulation Data

Goal Name	Unit	Value
SG Min Temperature (Solid) 1	[°C]	21.44626978
SG Av Temperature (Solid) 1	[°C]	23.29457284
SG Max Temperature (Solid) 1	[°C]	26.25294981
SG FLUID OUT	[°C]	21.29131647
PRESSURE DROP	[lbf/in^2]	18.99765108

SG-Surface goal is a parameter on selected surface(s).
In this case, it is the entire tube side surface area.

RESULTS

Thermal Resistance: 0.0032 °C/W

Pressure Drop: 18.99psi

Min Surface Temp: 21.44°C

Max Surface Temp: 26.25°C

Water Temp Out: 21.29°C